

5.73 m

2.21 m 3.37 m

3.40 m

1.01 m

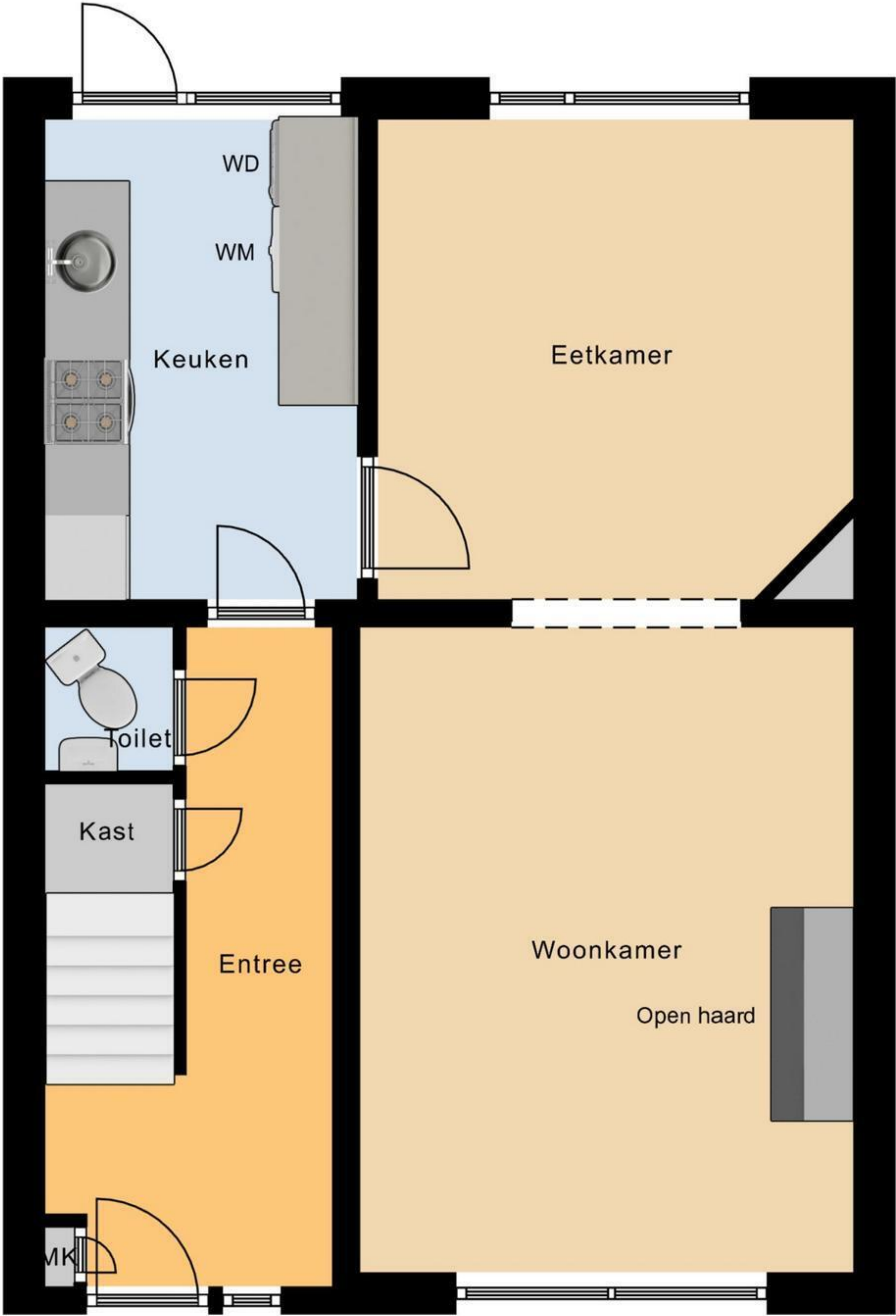
3.56 m

3.24 m

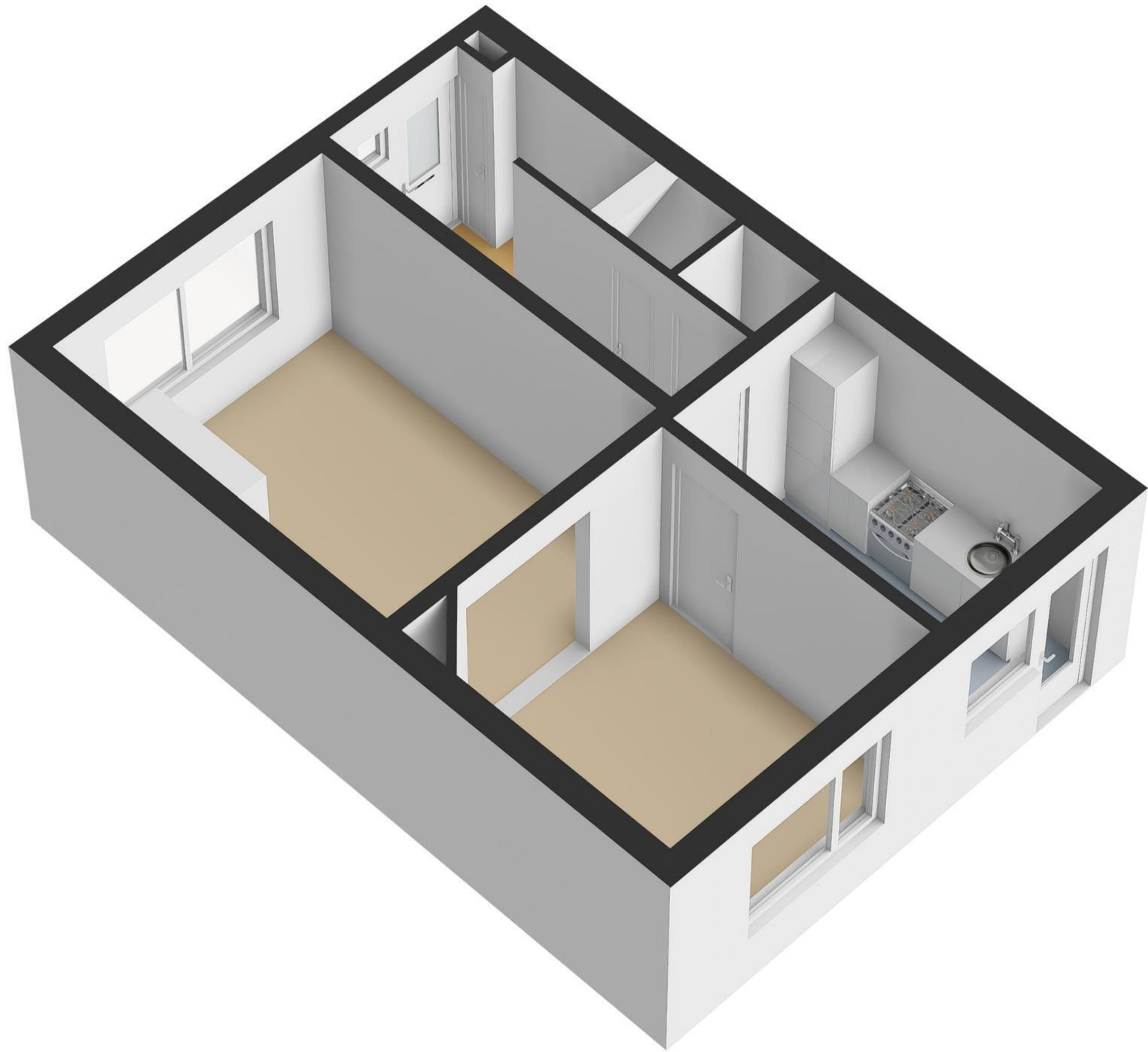
8.17 m

4.57 m

1.73 m 3.50 m



Begane Grond

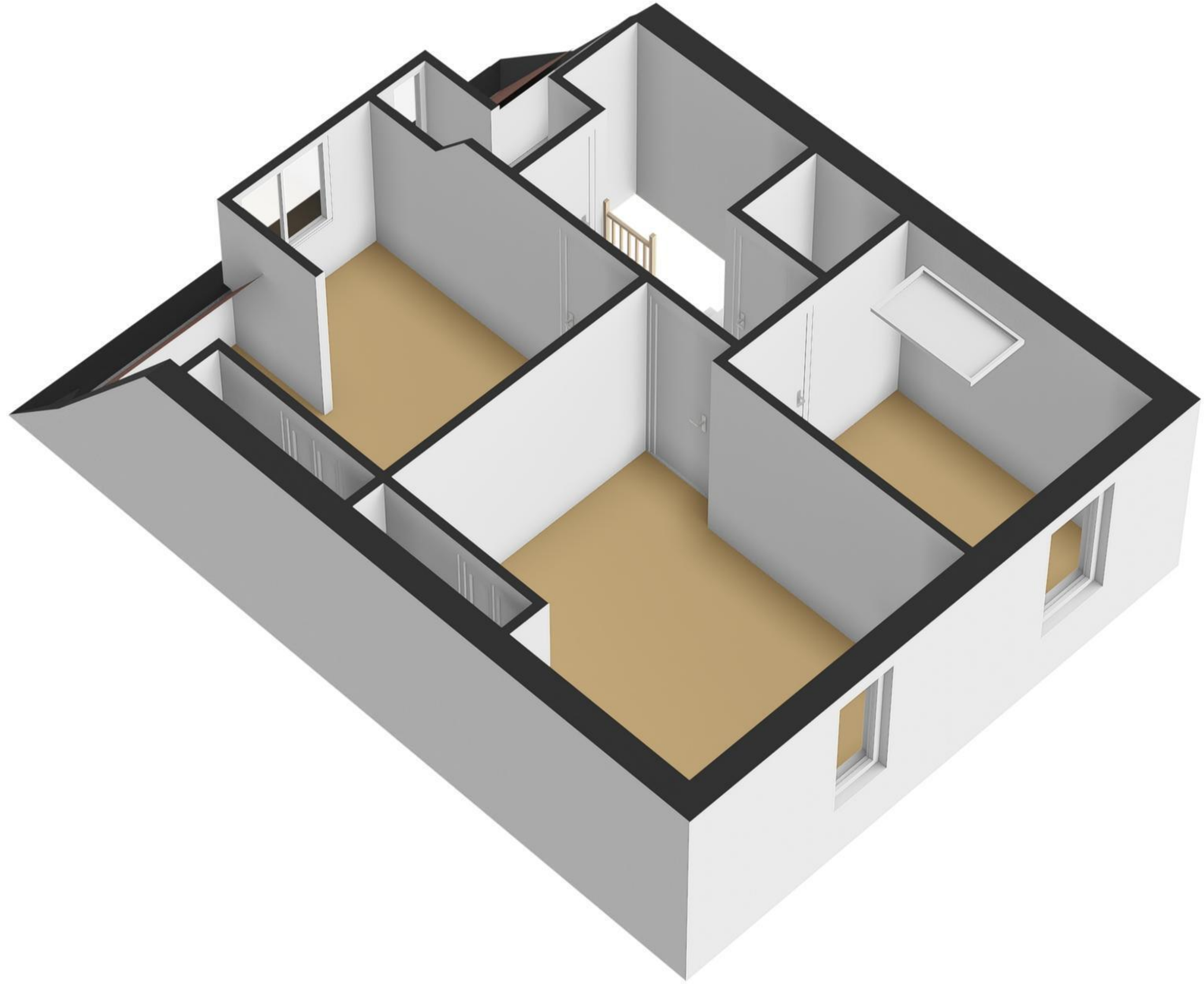


5.73 m

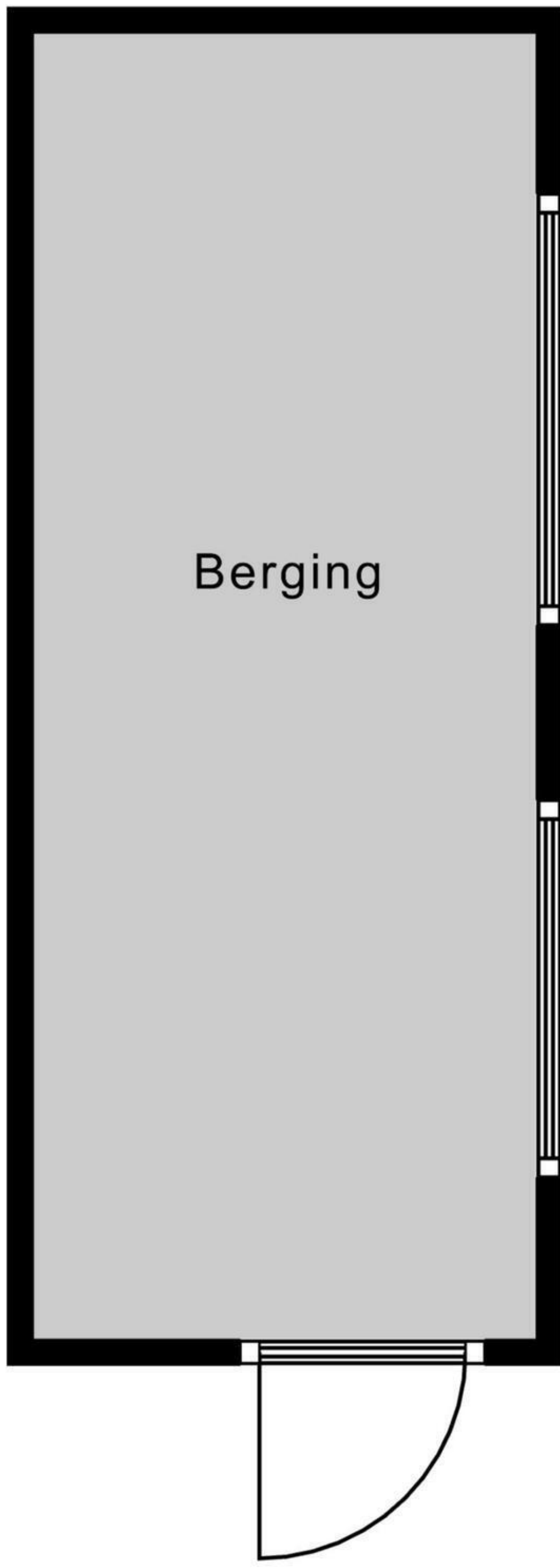
2.30 m 3.33 m



Eerste Verdieping



← 1.85 m →



Berging

↑
4.81 m
↓

Berging

