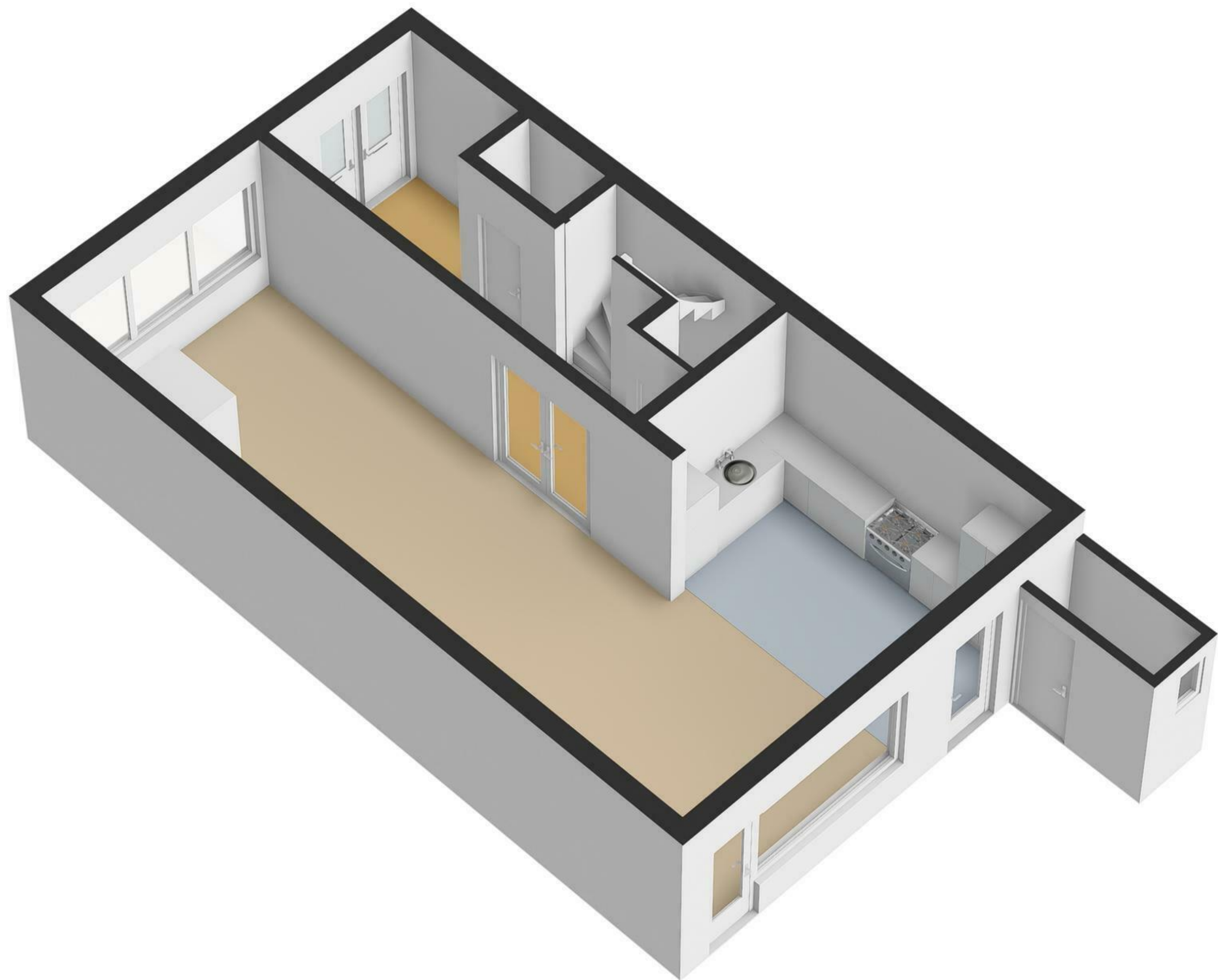
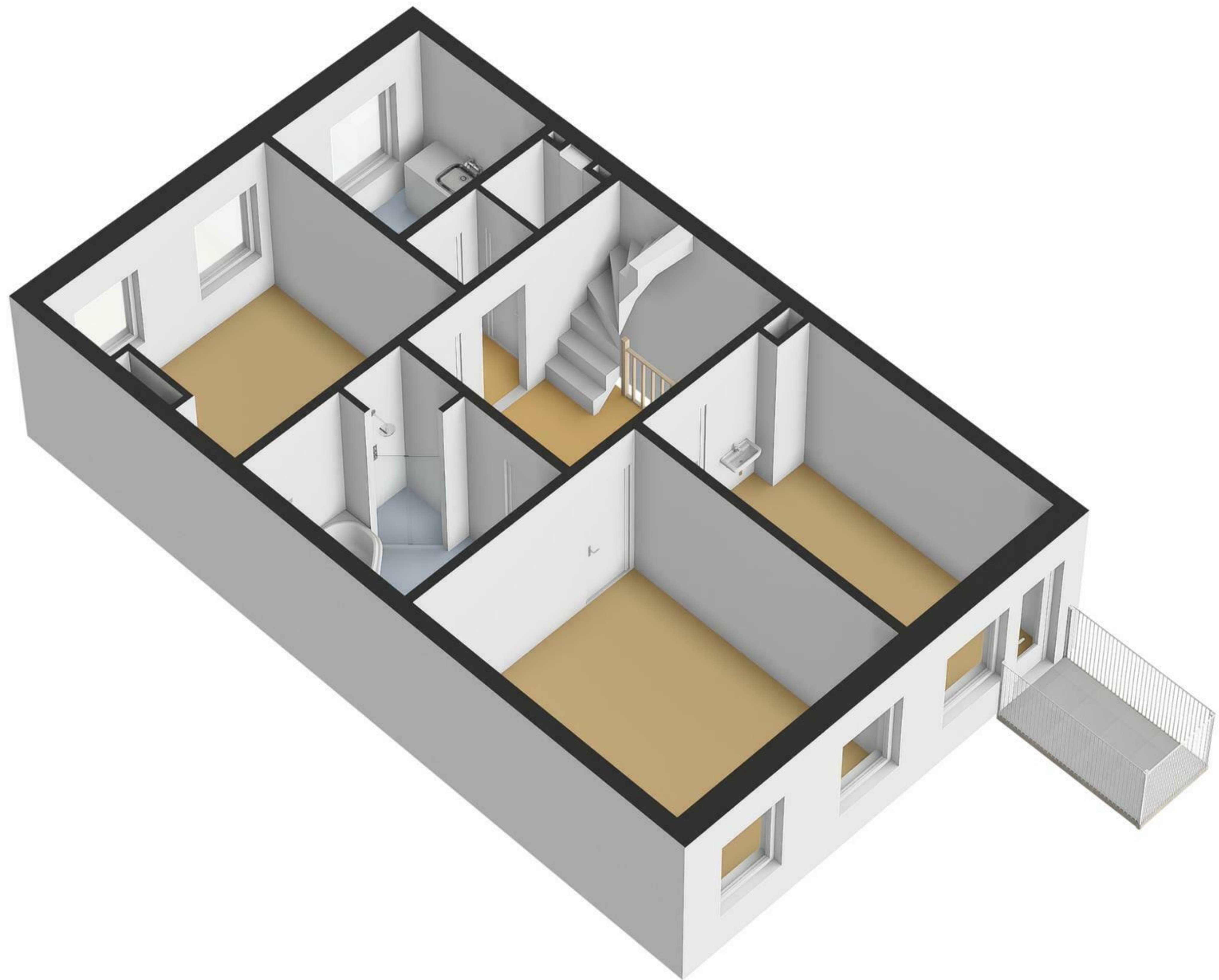


Begane Grond





1e Verdieping



5.51 m

2.67 m

2.60 m

2.79 m

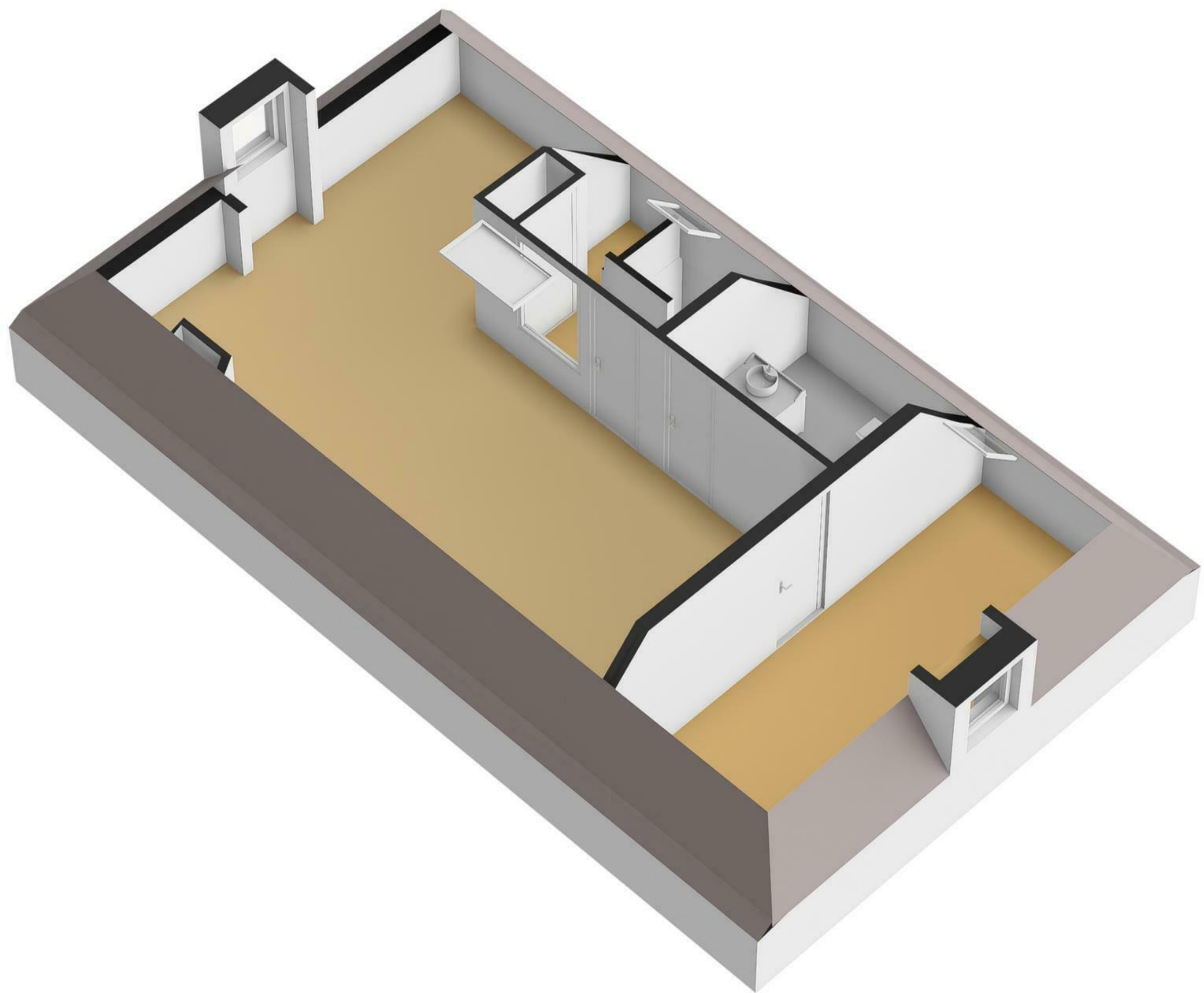
2.84 m

10.74 m



6.65 m

2e Verdieping



◀ 0.94 m ▶

8.41 m

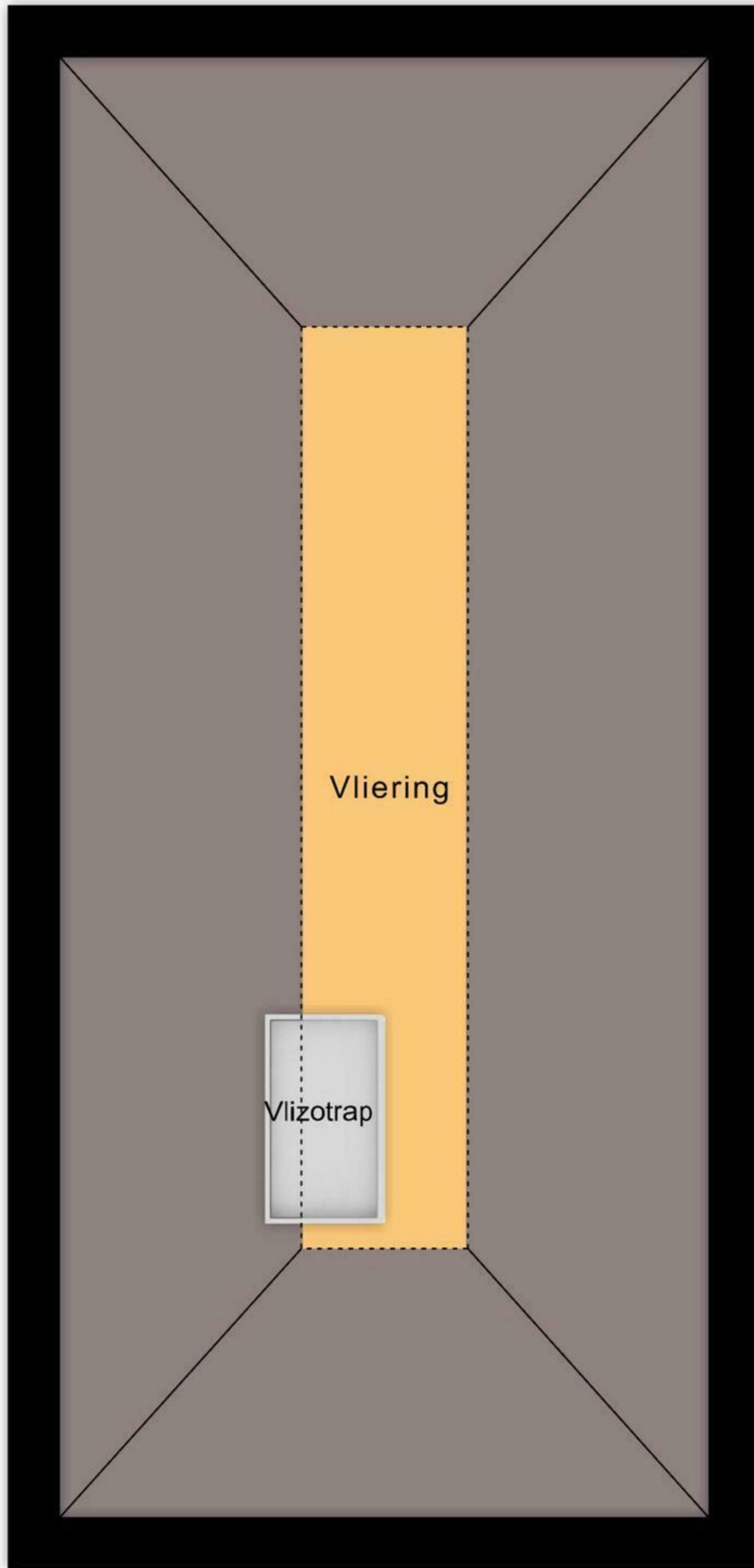
5.31 m

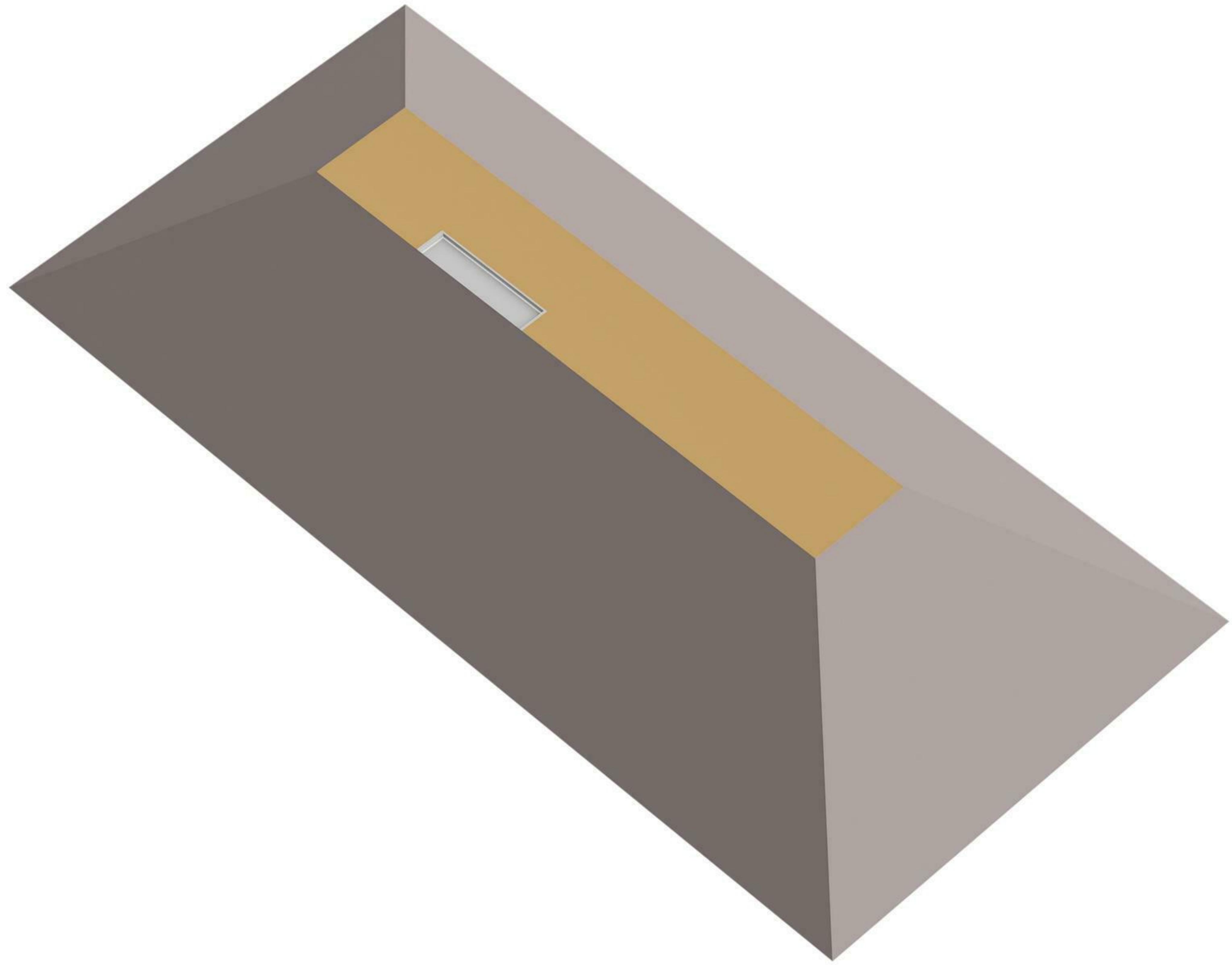
Vliering

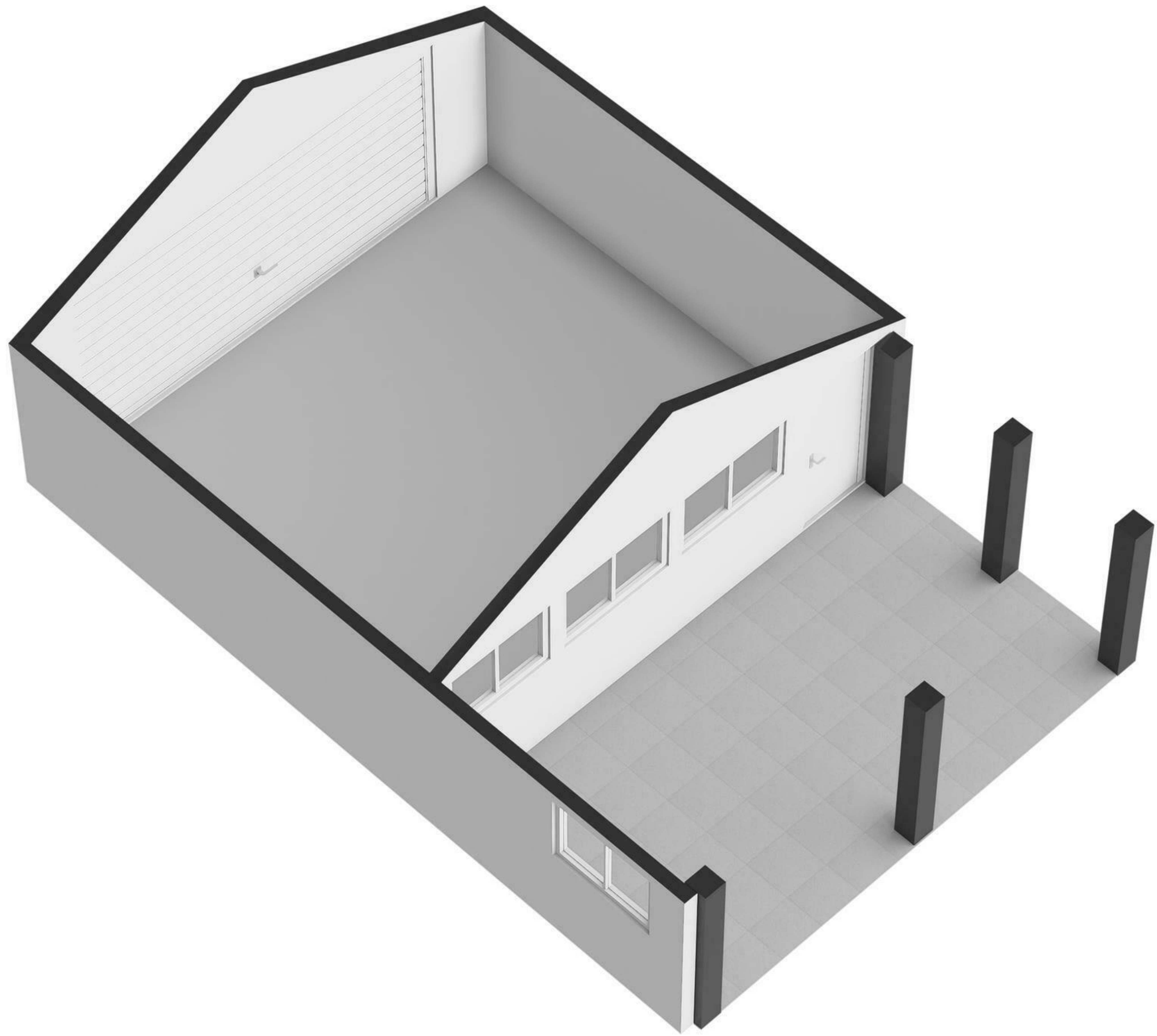
Vlizotrap

3.65 m

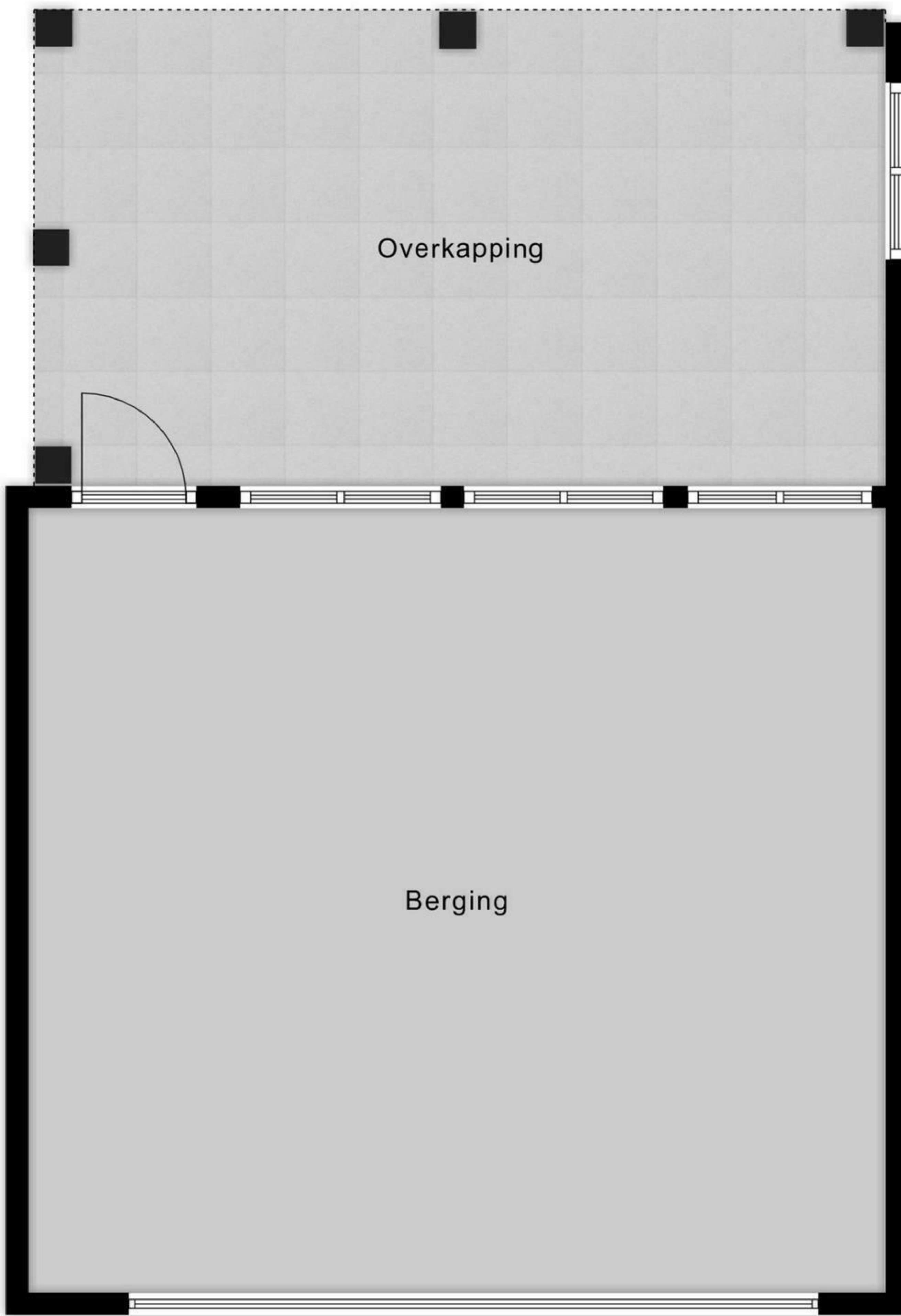
Vliering







5.73 m



Overkapping

3.20 m

Berging

5.28 m

5.77 m

Berging