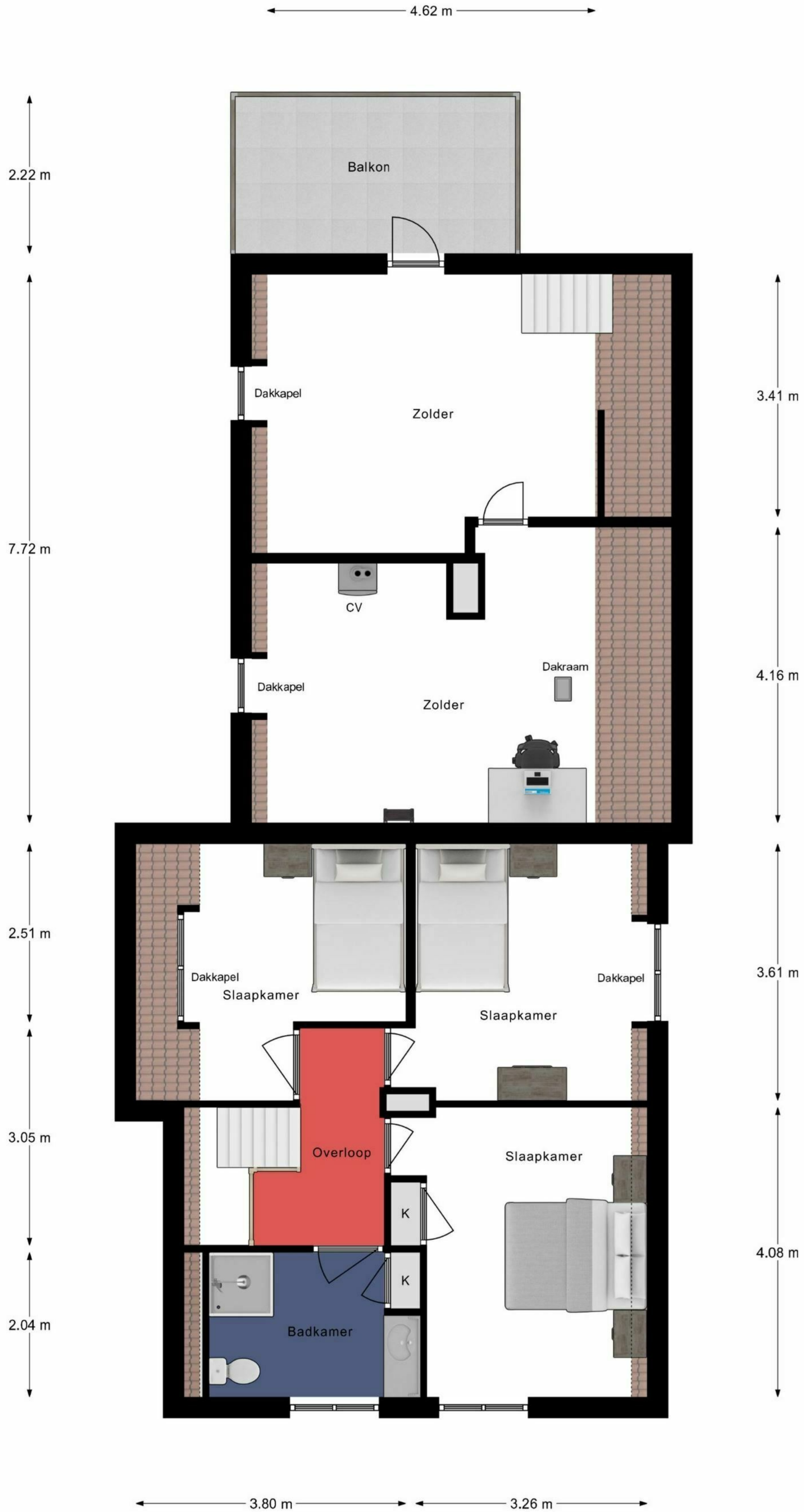
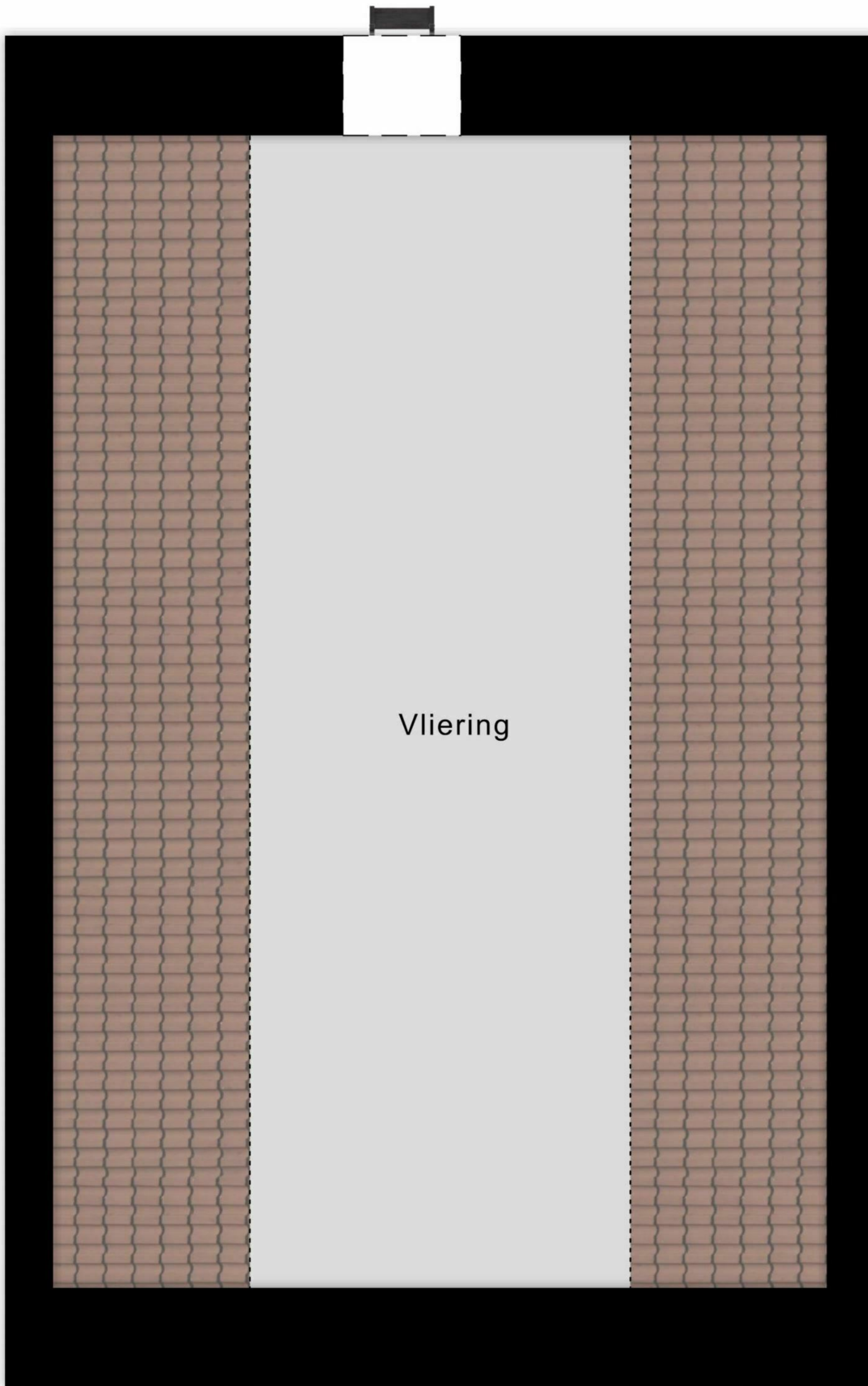


Begane Grond



1e Verdieping



Vliering

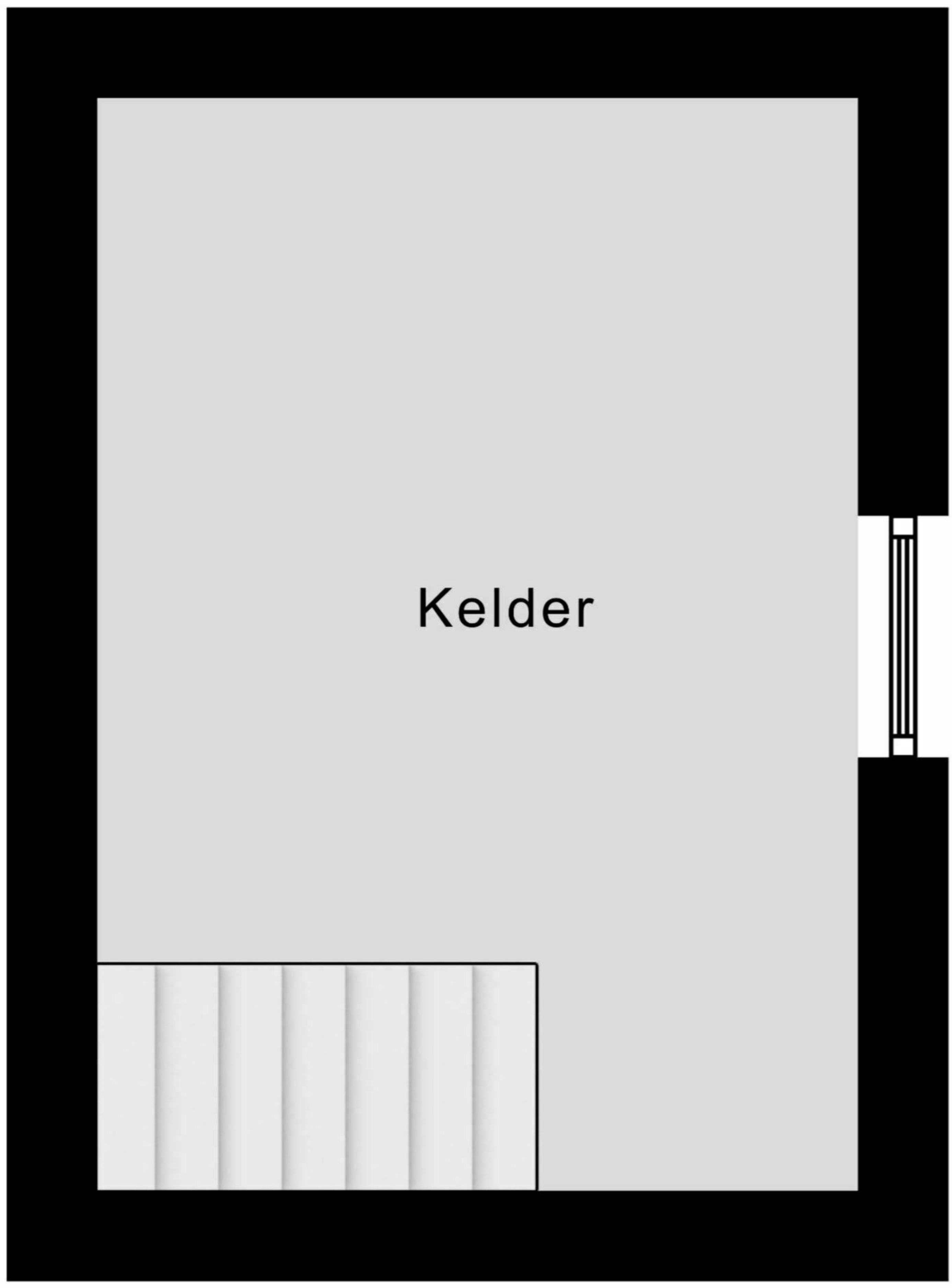
7.15 m

4.80 m

Vliering

← 2.52 m →

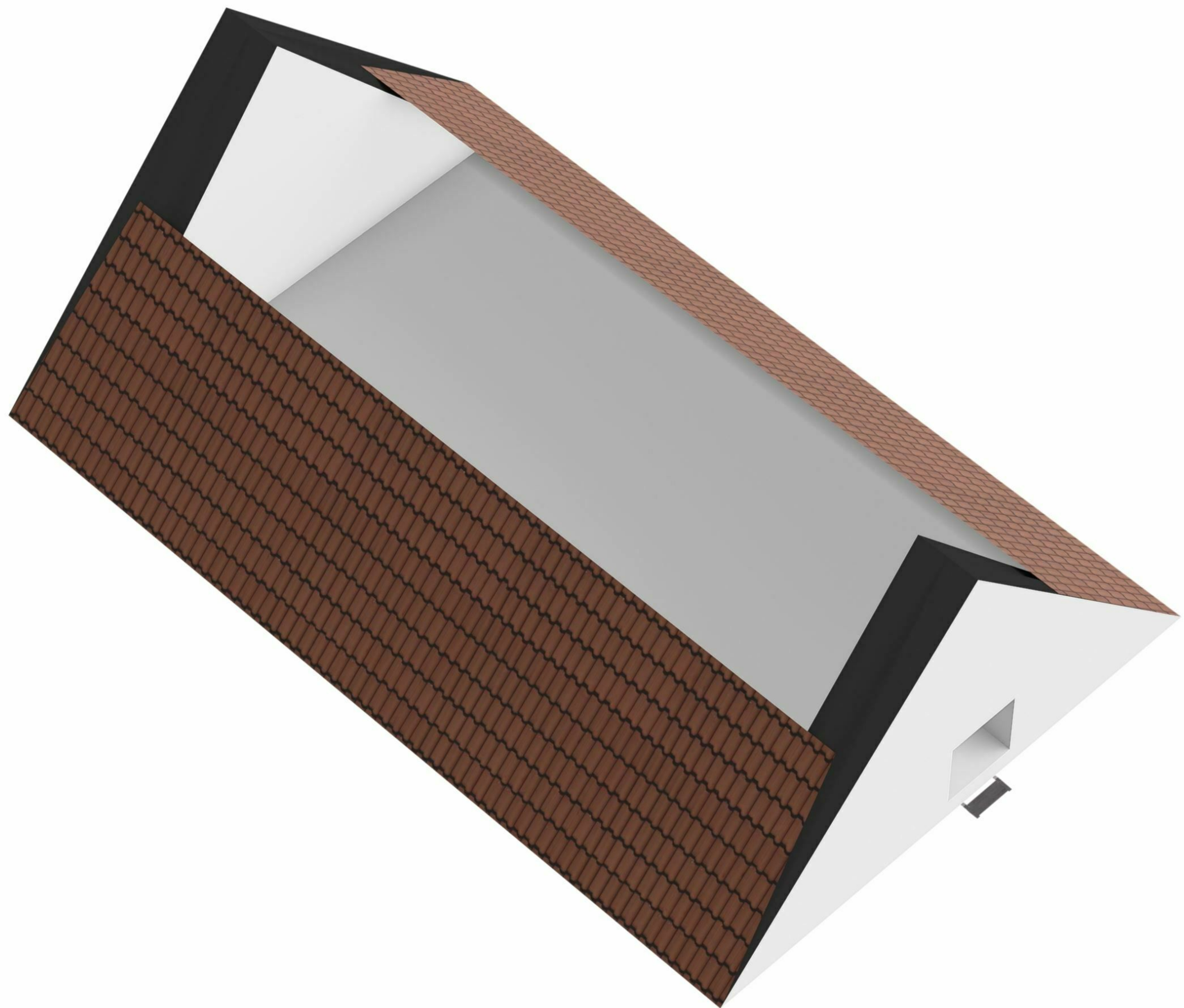
↑
3.62 m
↓

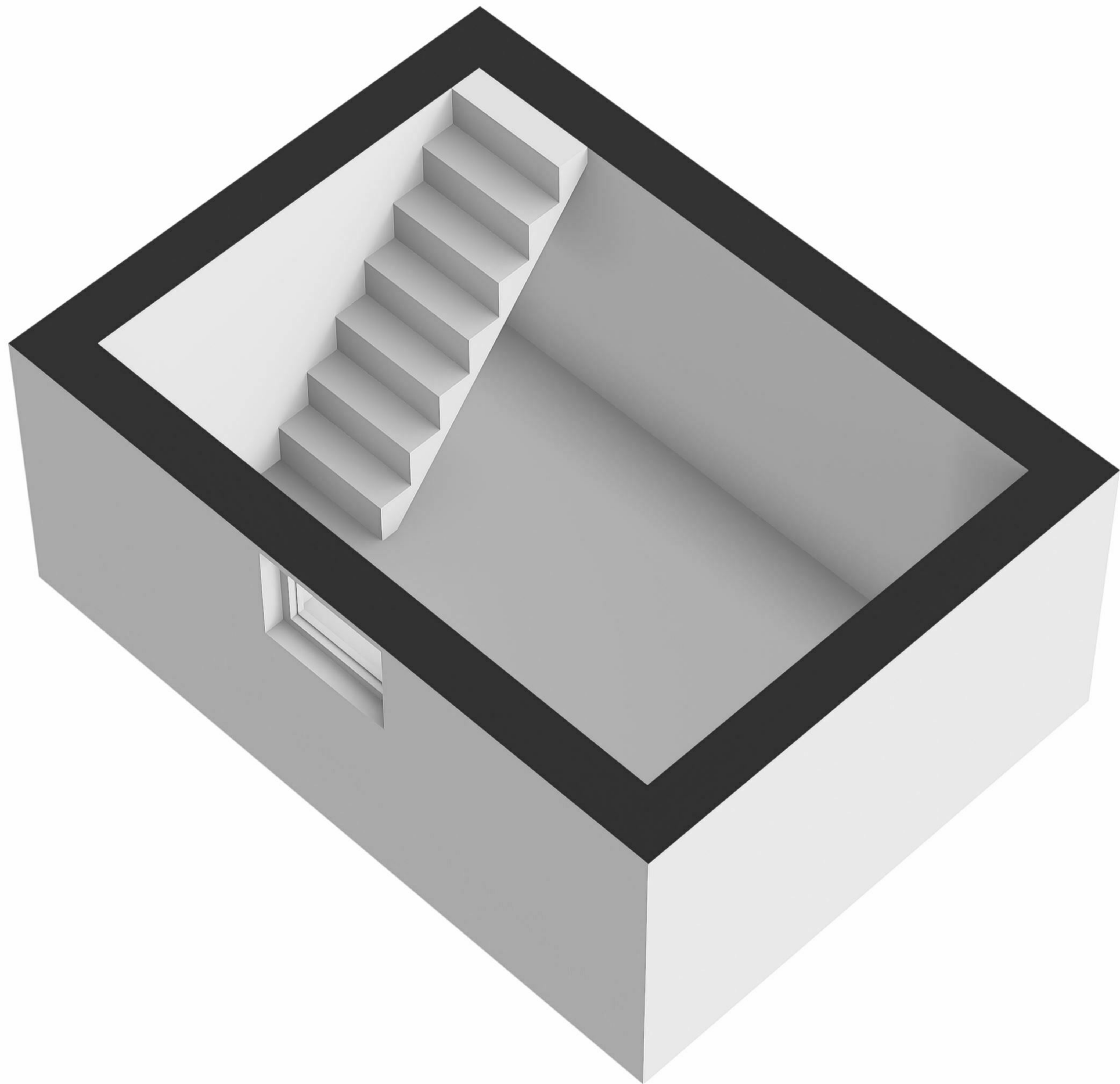


Kelder







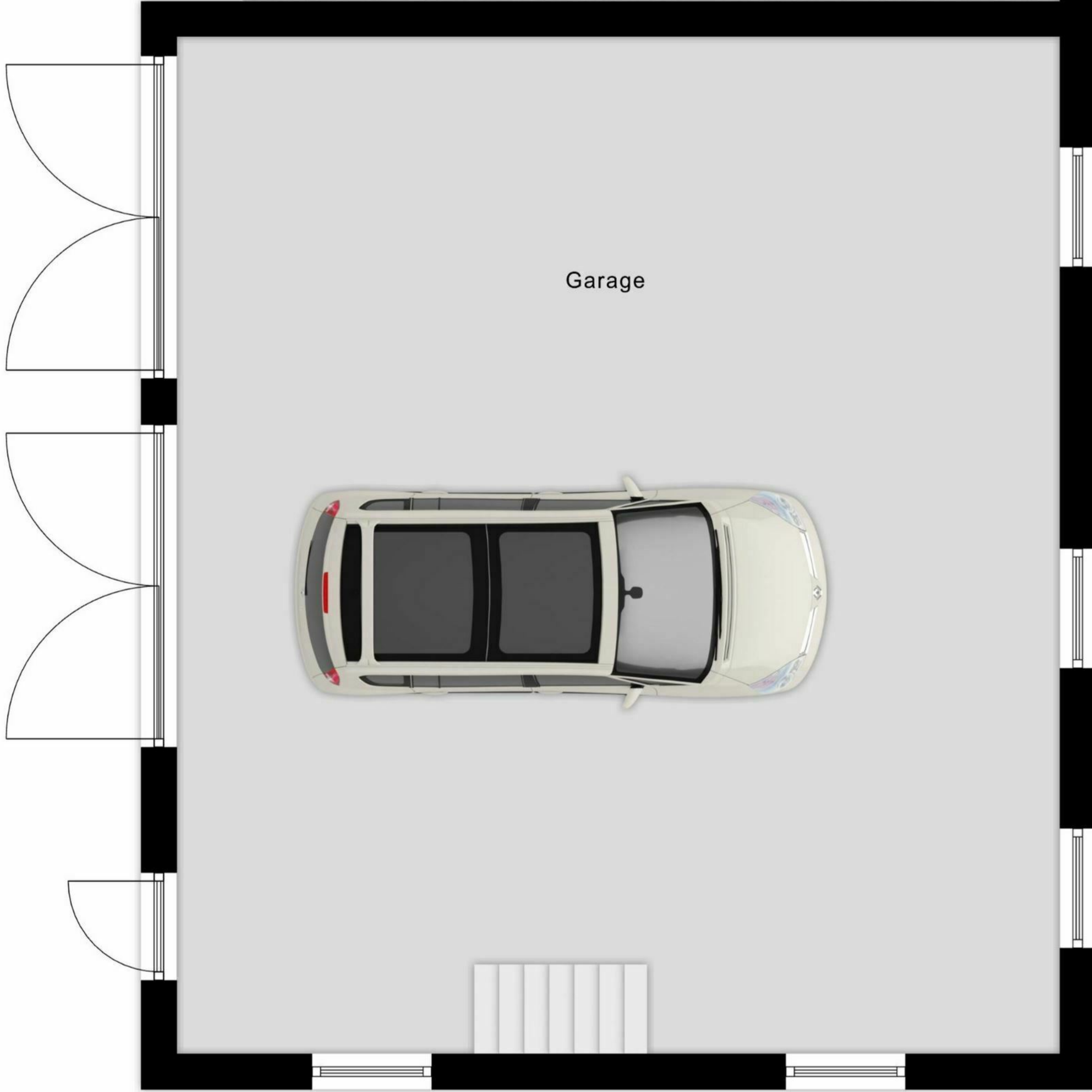


6.85 m



Overkapping

3.18 m



Garage

8.52 m

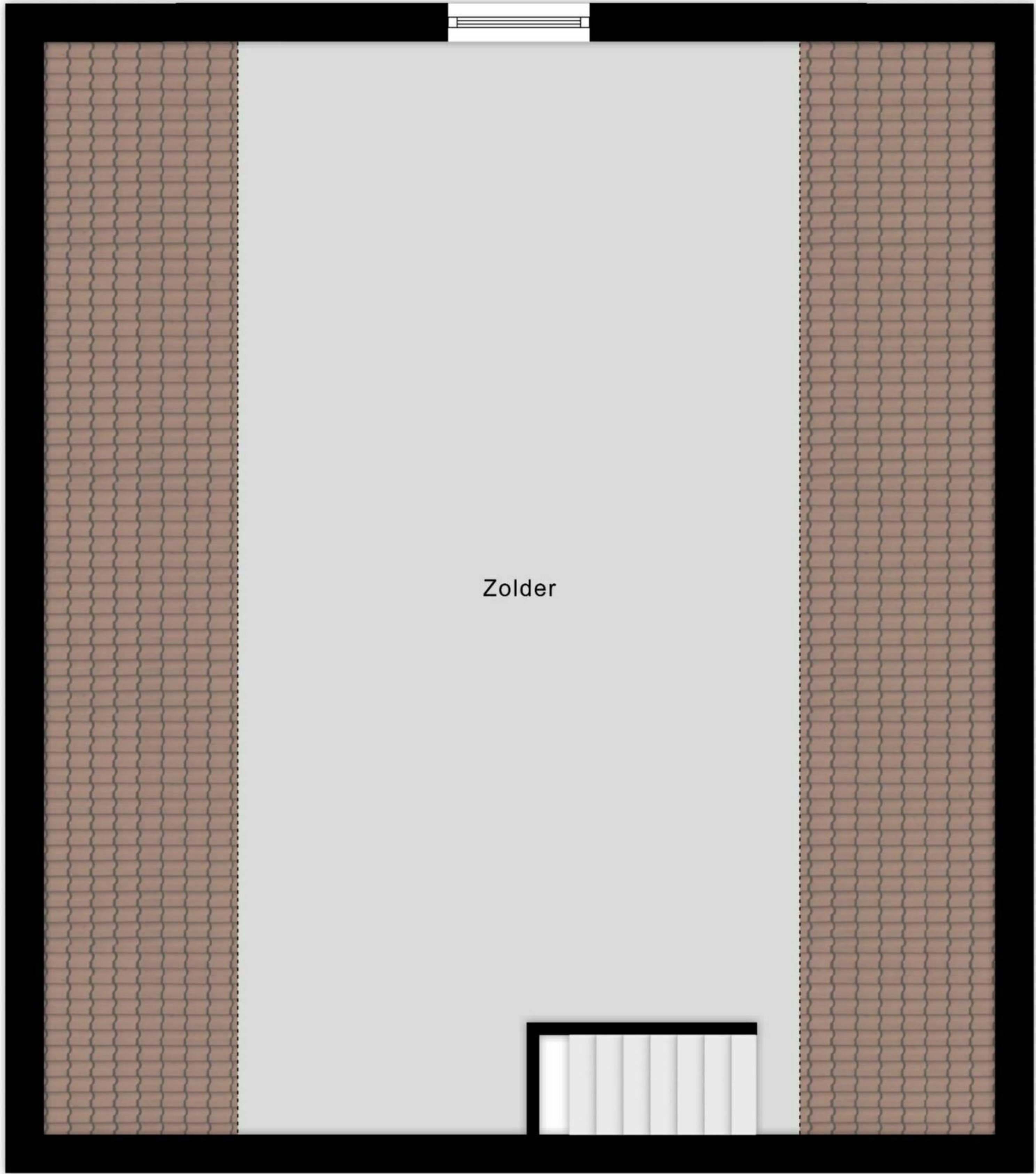
7.40 m

Garage Begane Grond

4.37 m

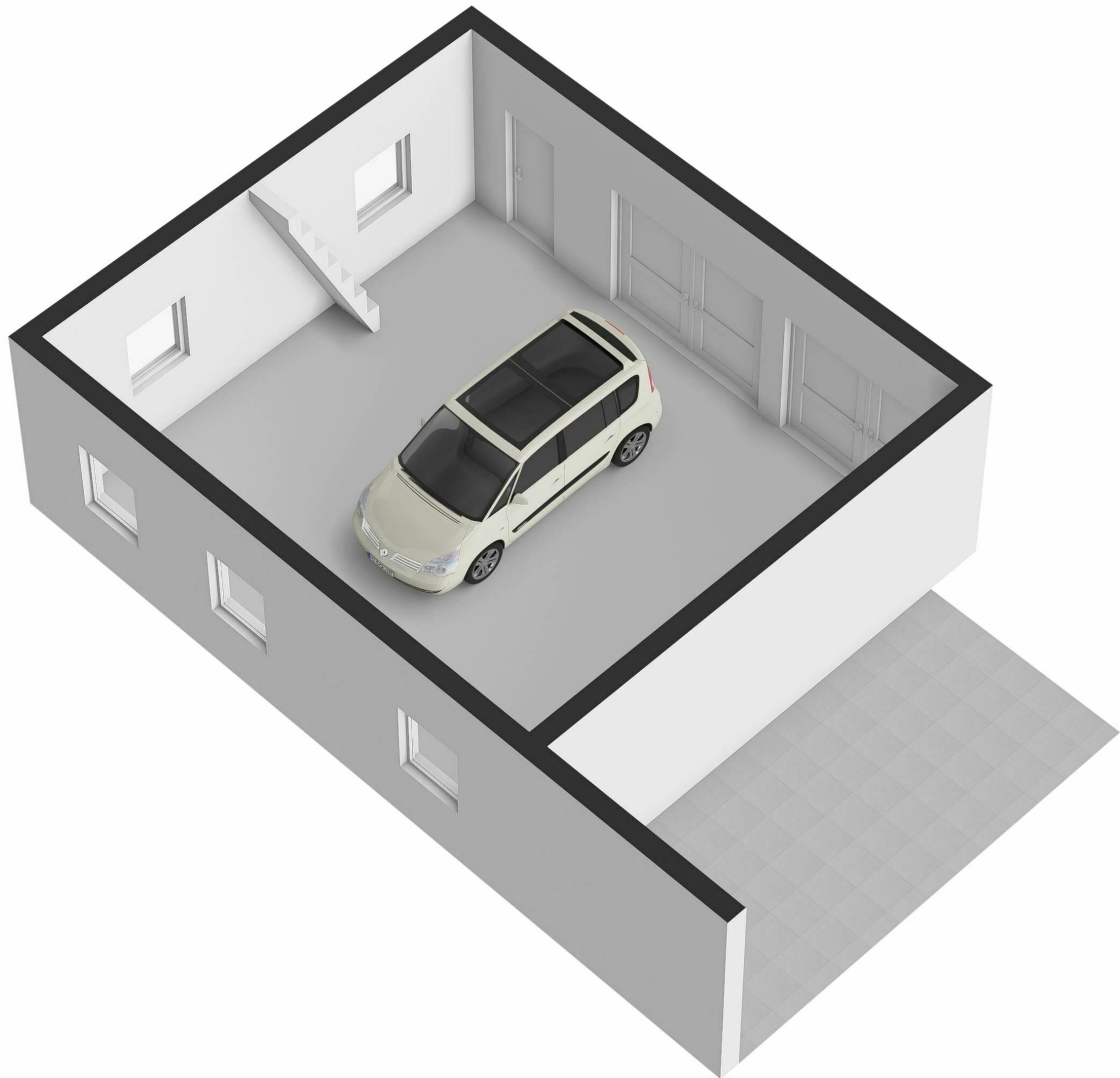
8.50 m

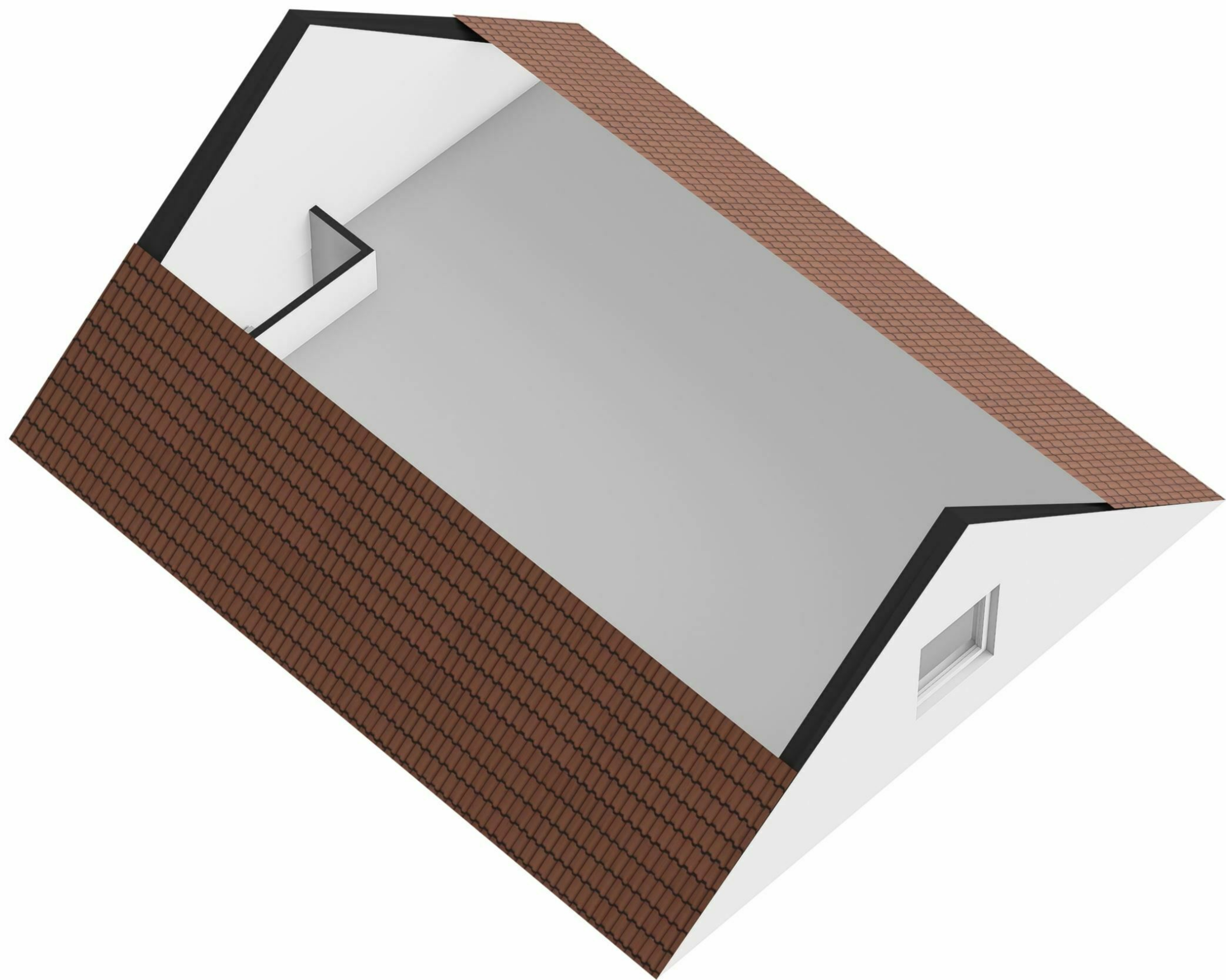
8.50 m



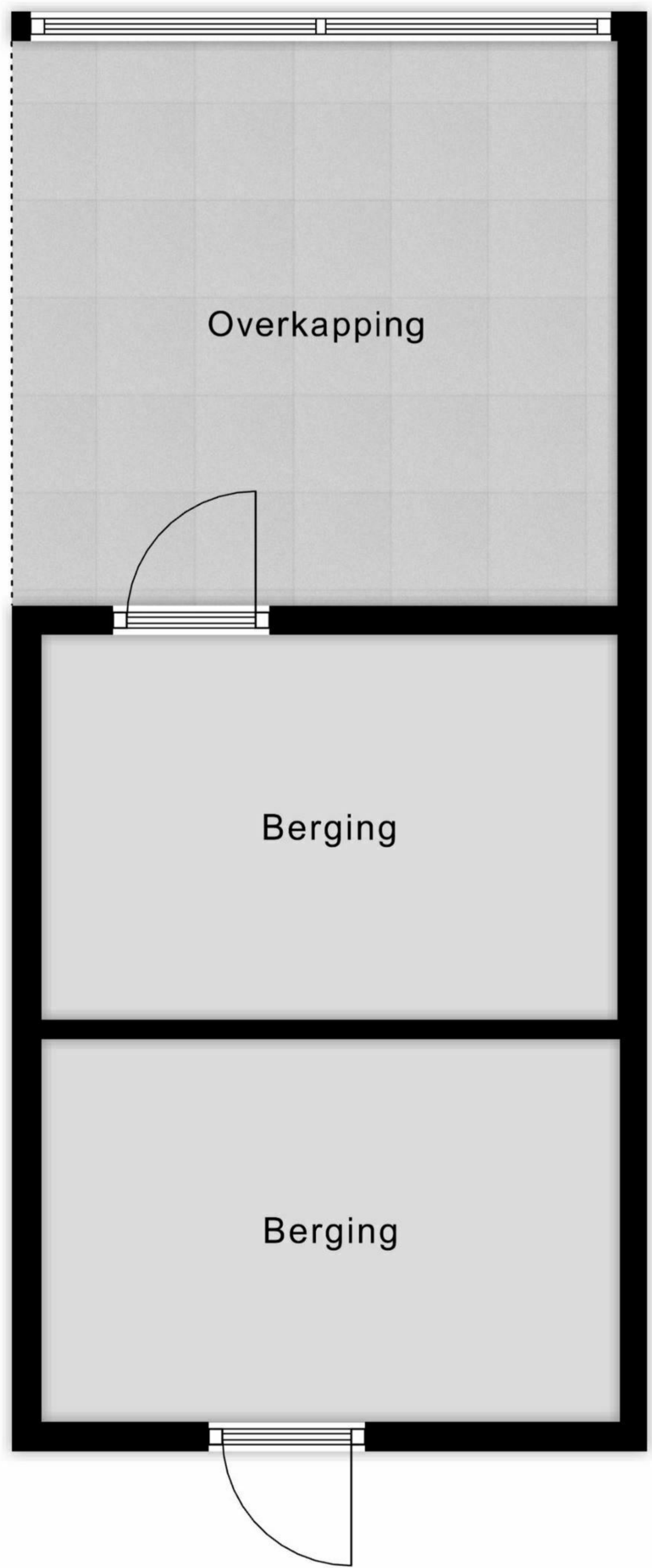
Zolder

Garage Zolder





3.12 m



2.89 m

1.97 m

1.96 m

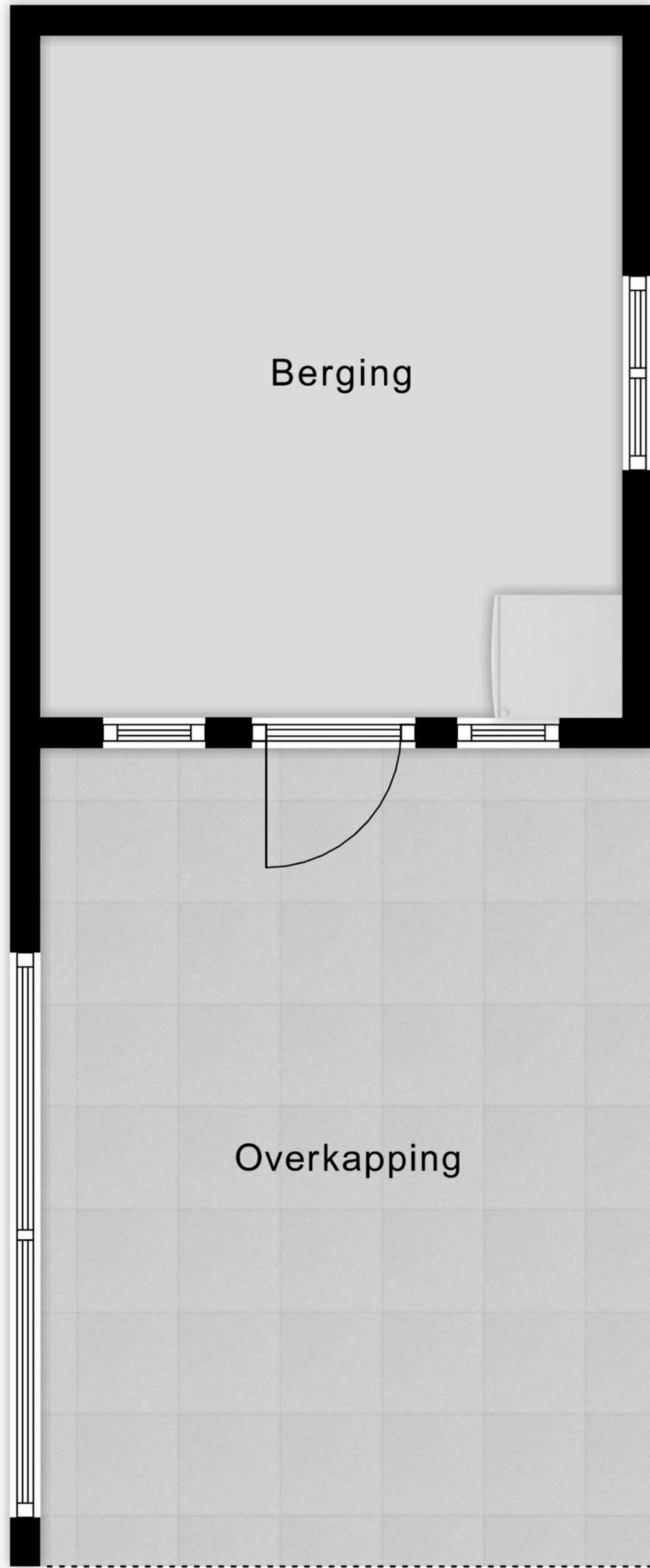
2.96 m

Berging 1

← 2.85 m →

↑ 3.34 m ↓

↑ 4.01 m ↓



Berging 2

