

6.02 m



3.01 m

5.31 m

5.40 m

3.00 m

0.90 m

2.50 m

Keuken

Woonkamer
 $h = 2.57$ m

Toilet

Hal

Entree

Schuur
 $h = 2.17$ m

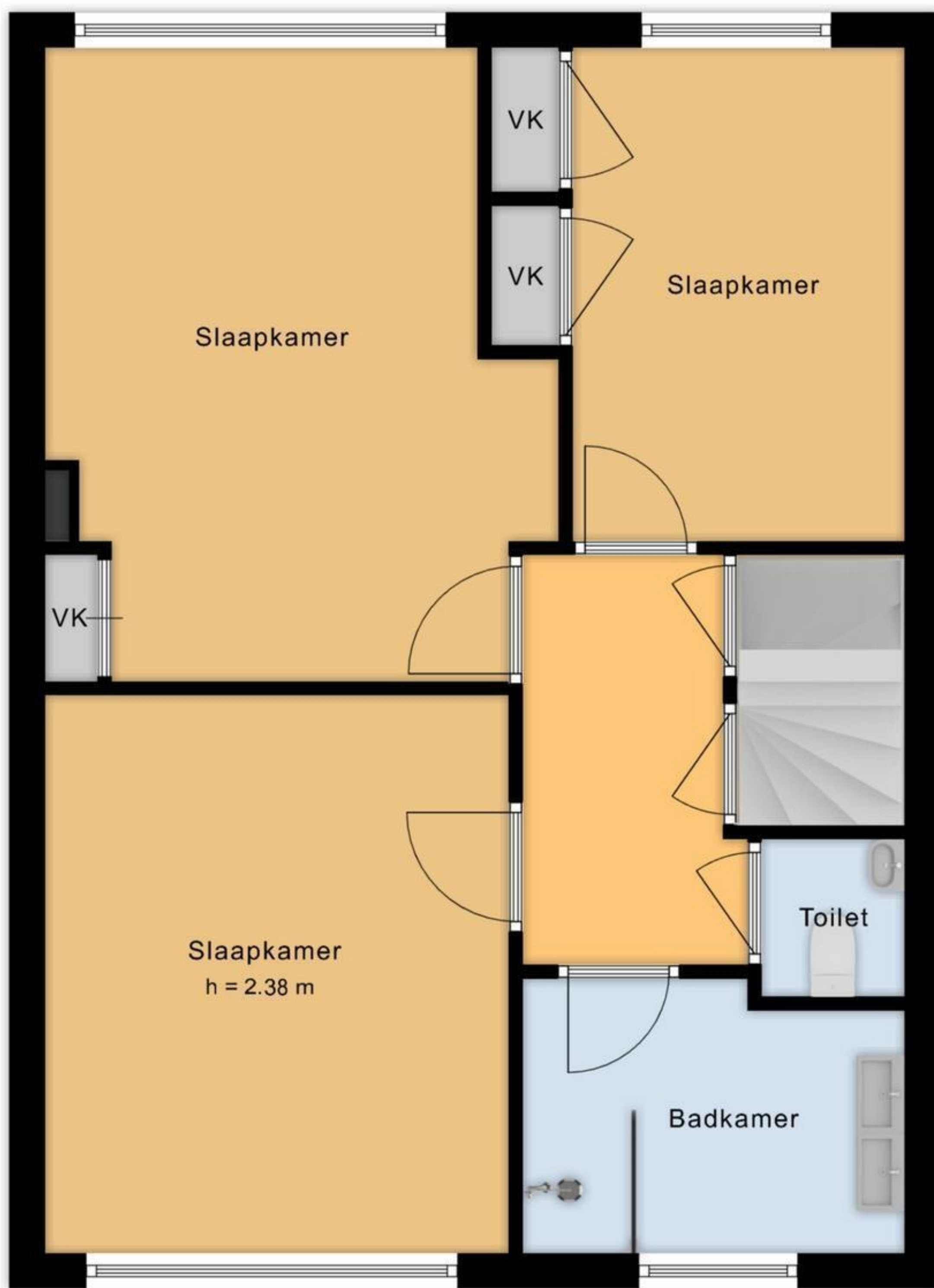
MK

VK

3.60 m

2.29 m

3.60 m
2.97 m 2.38 m



4.44 m
3.91 m

3.48 m
2.83 m
1.70 m

3.25 m 2.67 m
6.02 m

← 2.87 m → ← 1.02 m →



5.10 m

3.80 m

$>1.50\text{ m}$

$h = 2.10\text{ m}$

Slaapkamer
 $h = 2.73\text{ m}$

Overloop

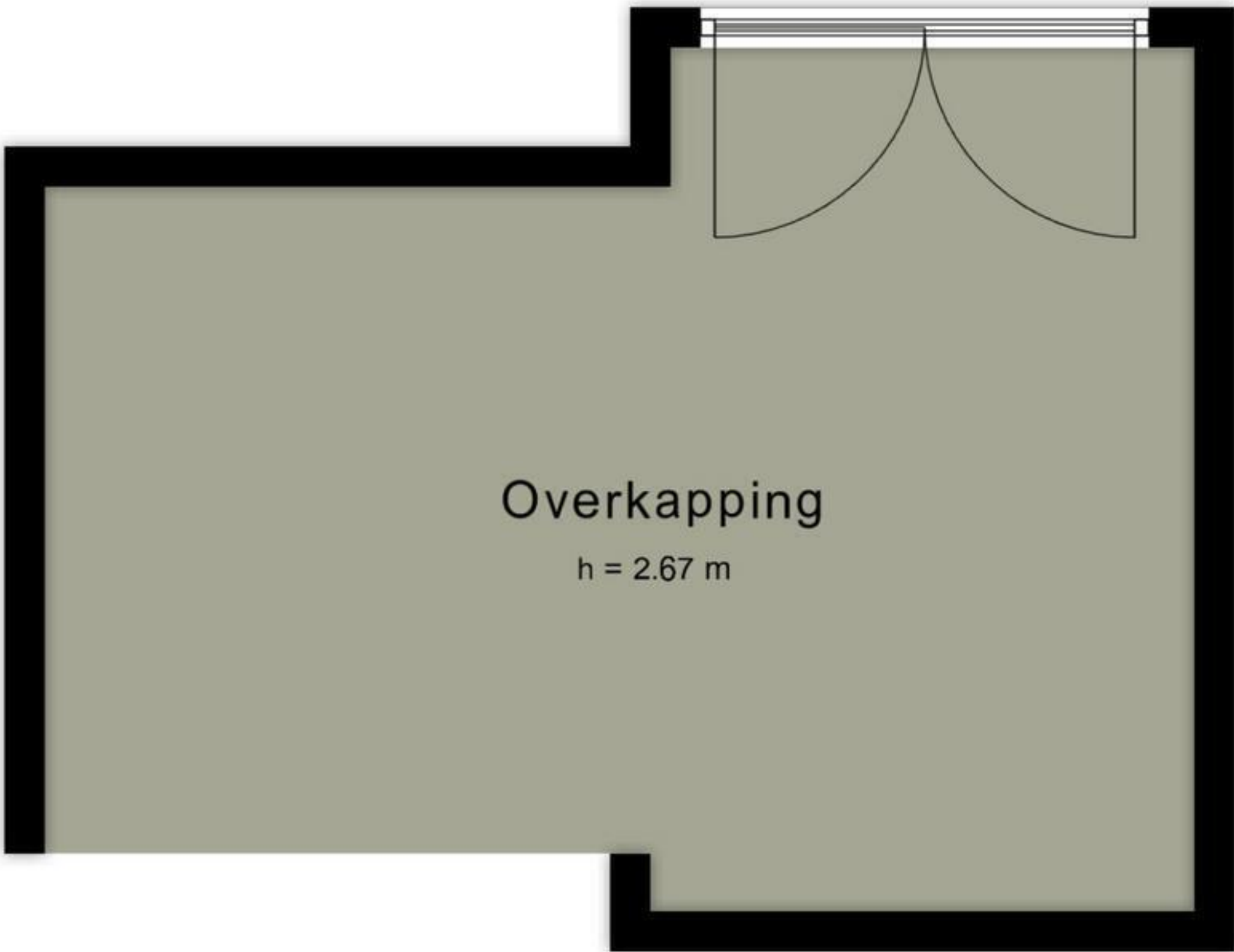
$>1.50\text{ m}$

3.61 m

2.31 m

6.02 m

3.10 m 2.60 m



Overkapping
h = 2.67 m

3.27 m

4.28 m

2.71 m

