

Begane Grond

← 2.21 m → ← 1.00 m → ← 1.19 m → ← 2.19 m →



← 3.26 m → ← 3.53 m →

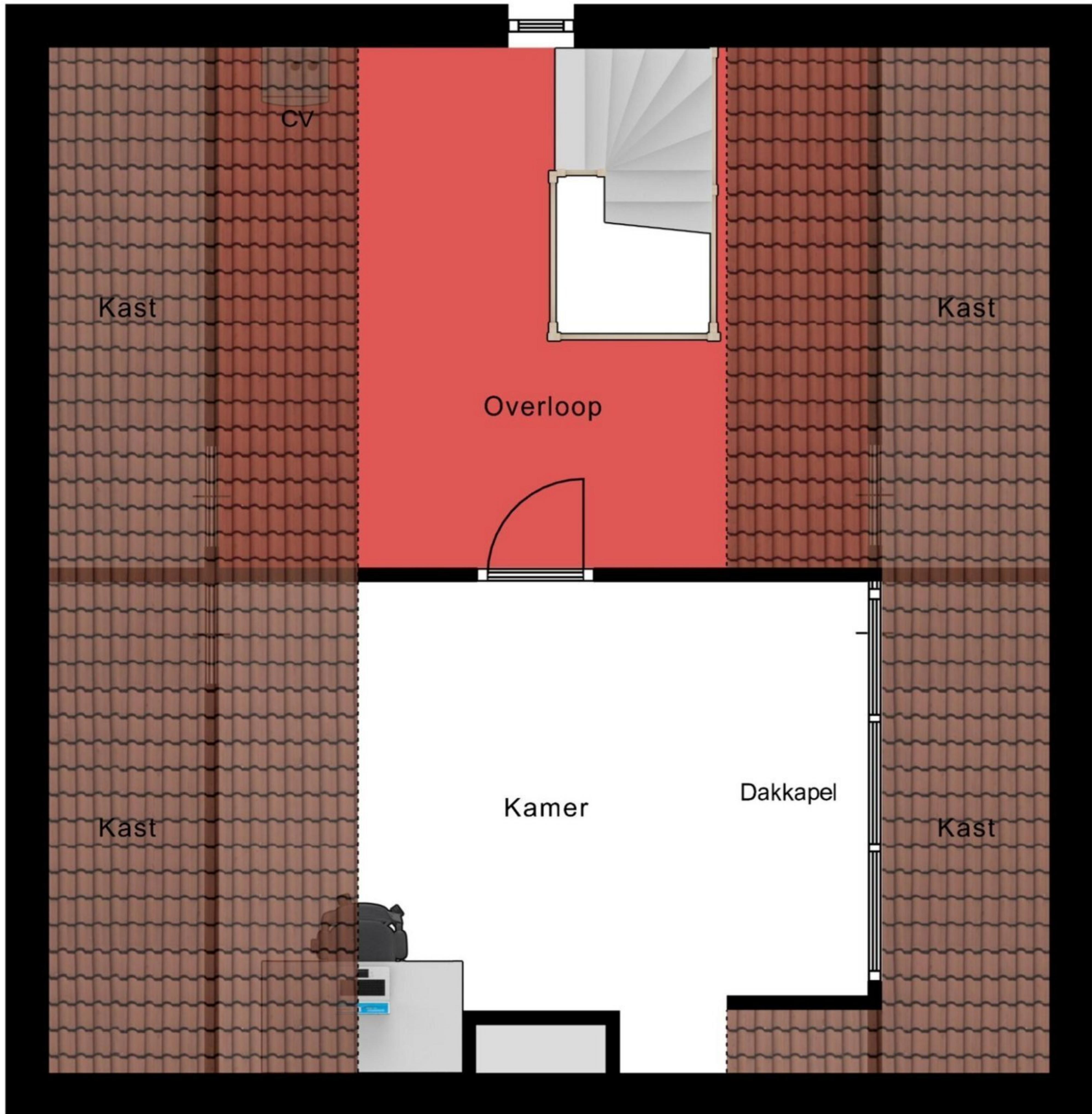
← 6.89 m →

1e Verdieping

4.47 m

6.63 m

3.58 m
3.38 m

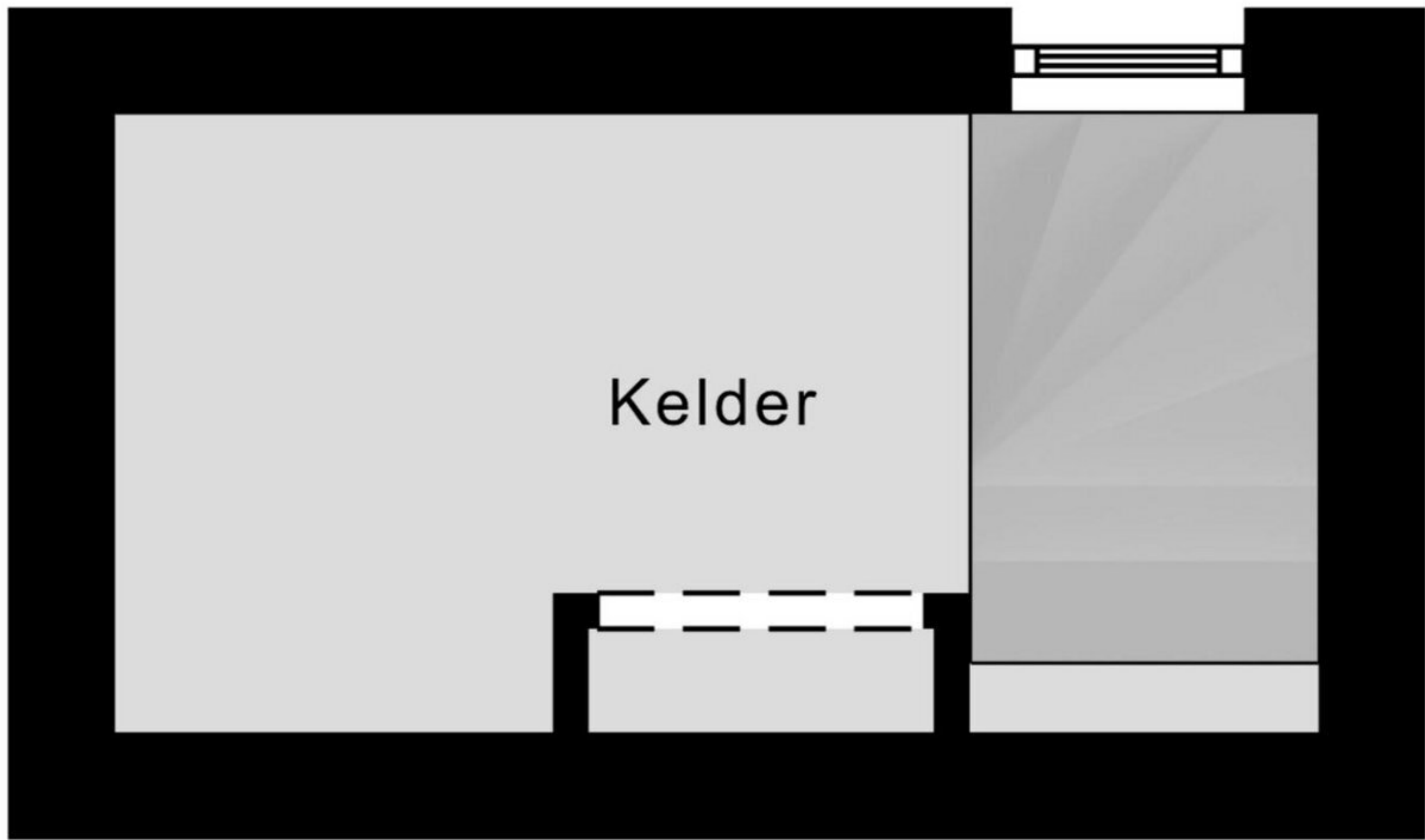


6.89 m

Zolder

← 3.37 m →

↑ 1.73 m ↓

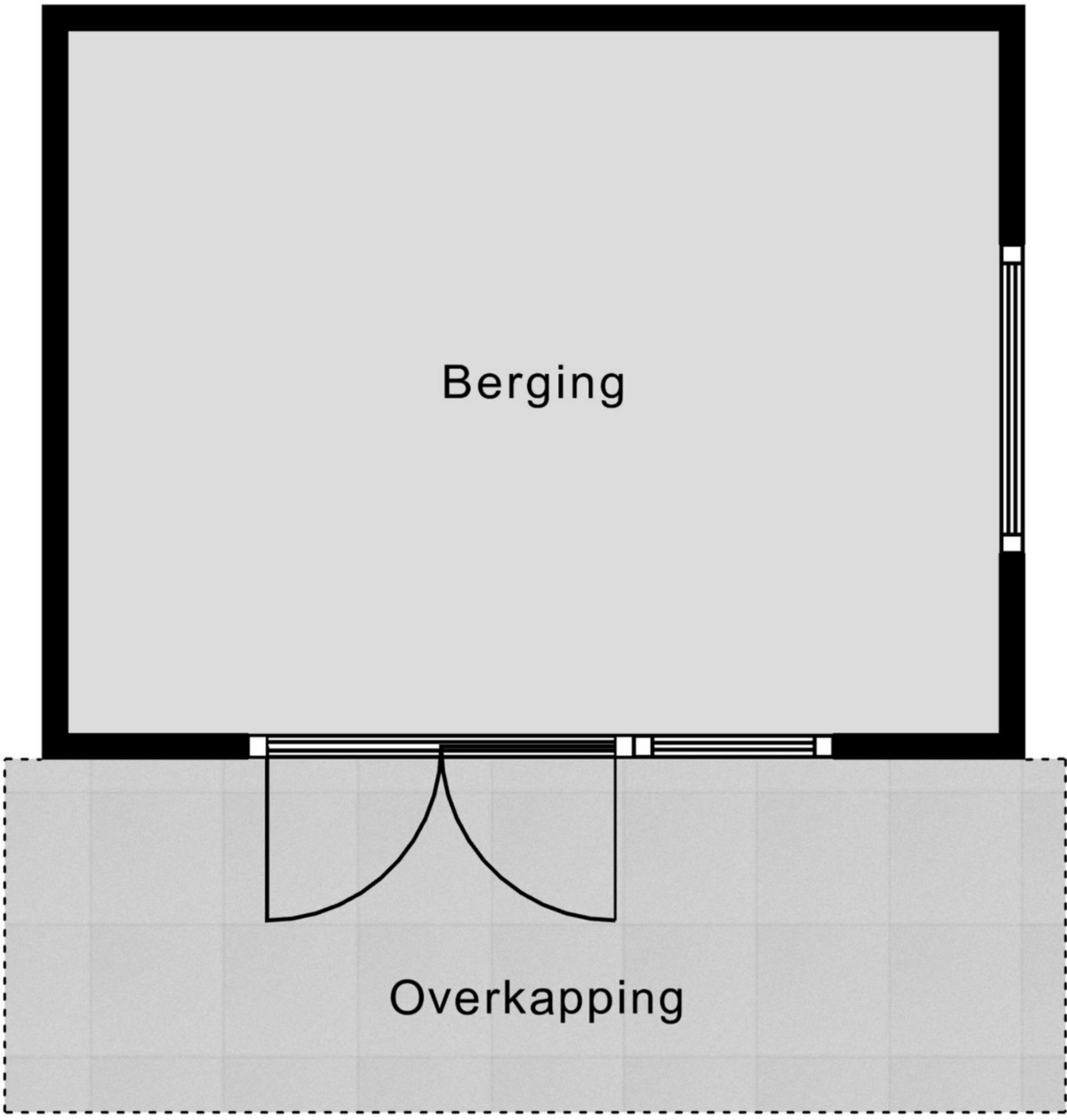


↑ 1.34 m ↓

← 1.23 m → ← 0.97 m → ← 0.98 m →

Kelder

3.50 m



Berging

2.64 m

Overkapping

1.33 m

3.99 m

Berging

