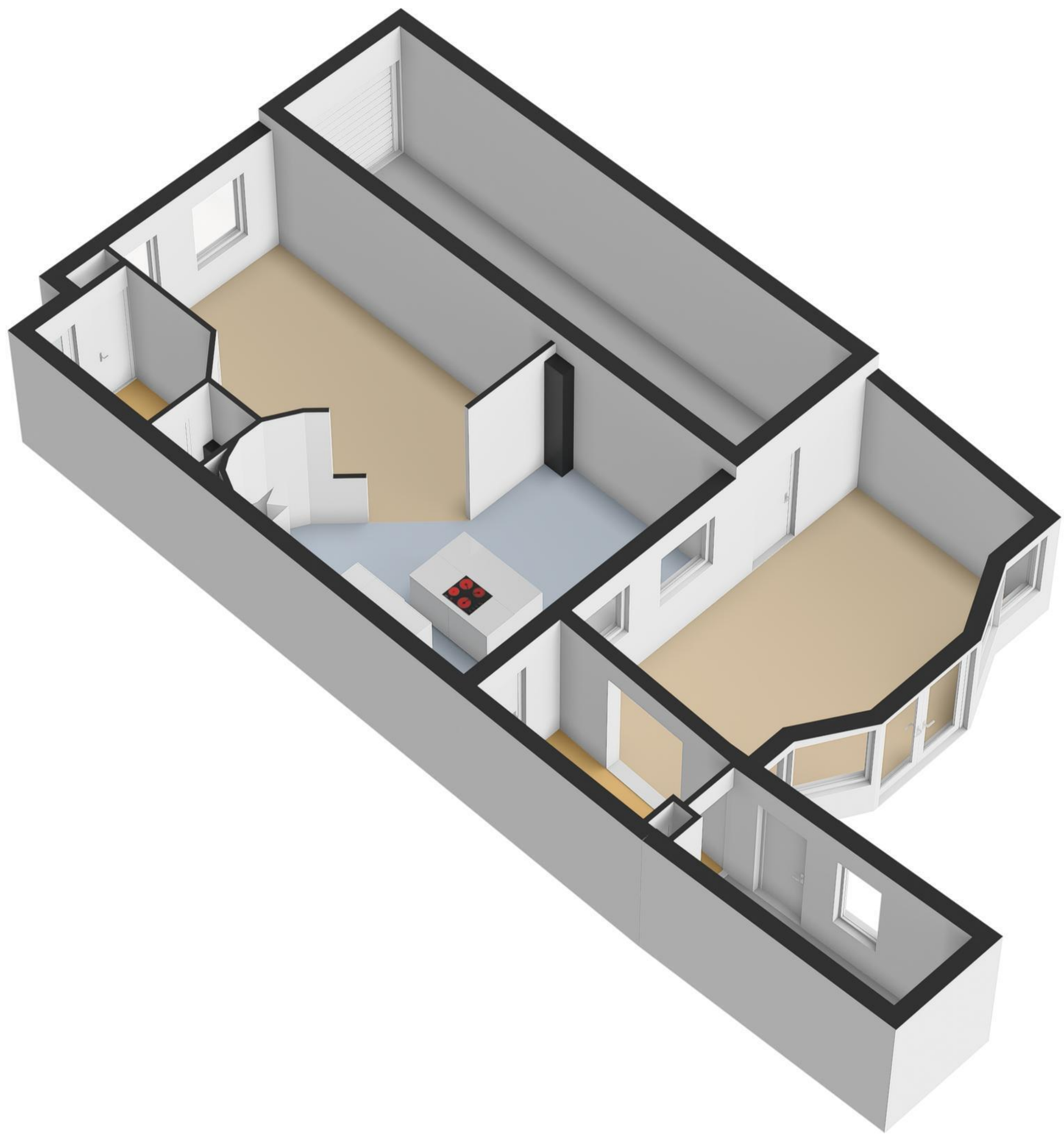
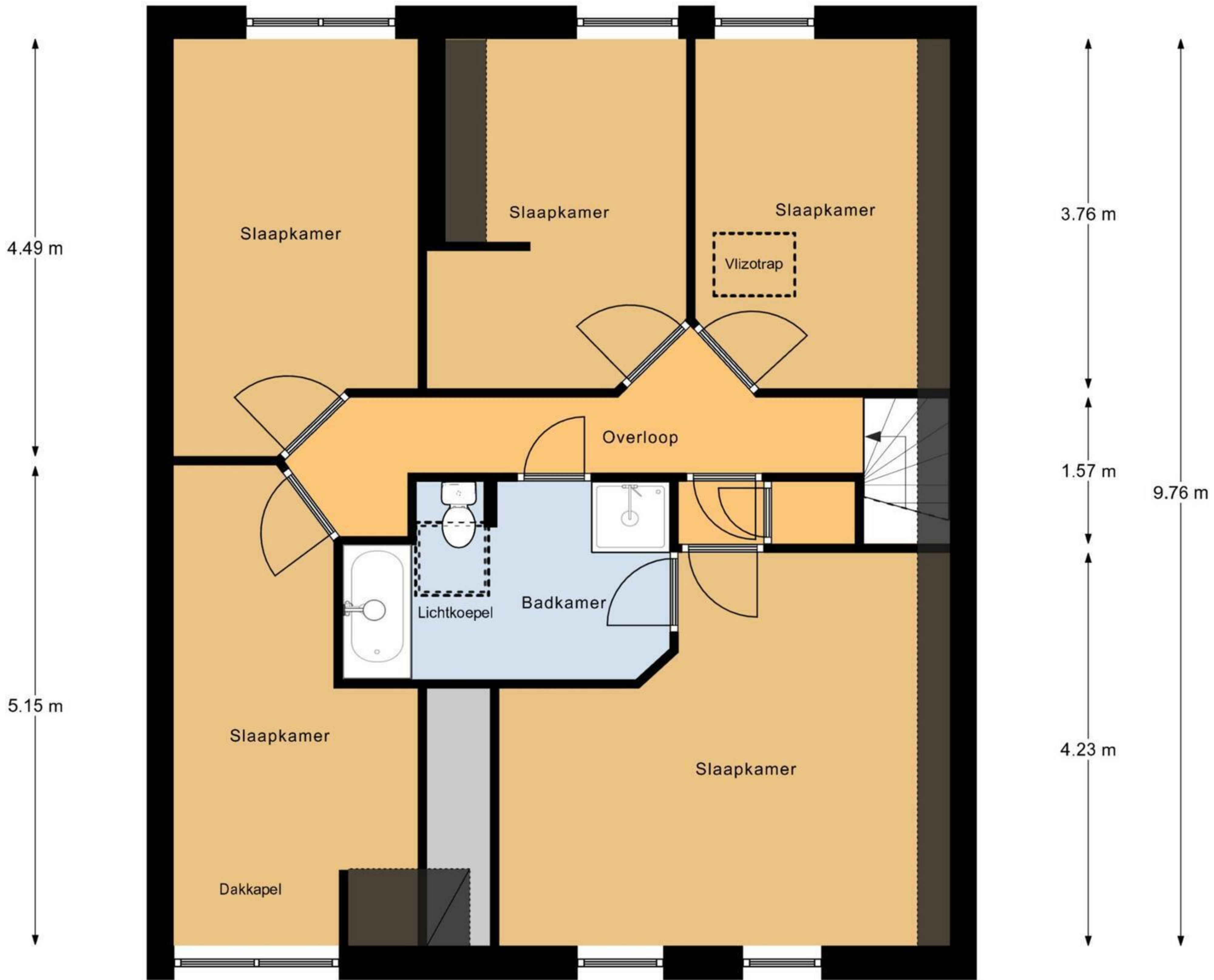


Begane Grond



1.72 m 3.52 m 2.92 m

2.63 m 2.59 m 2.74 m

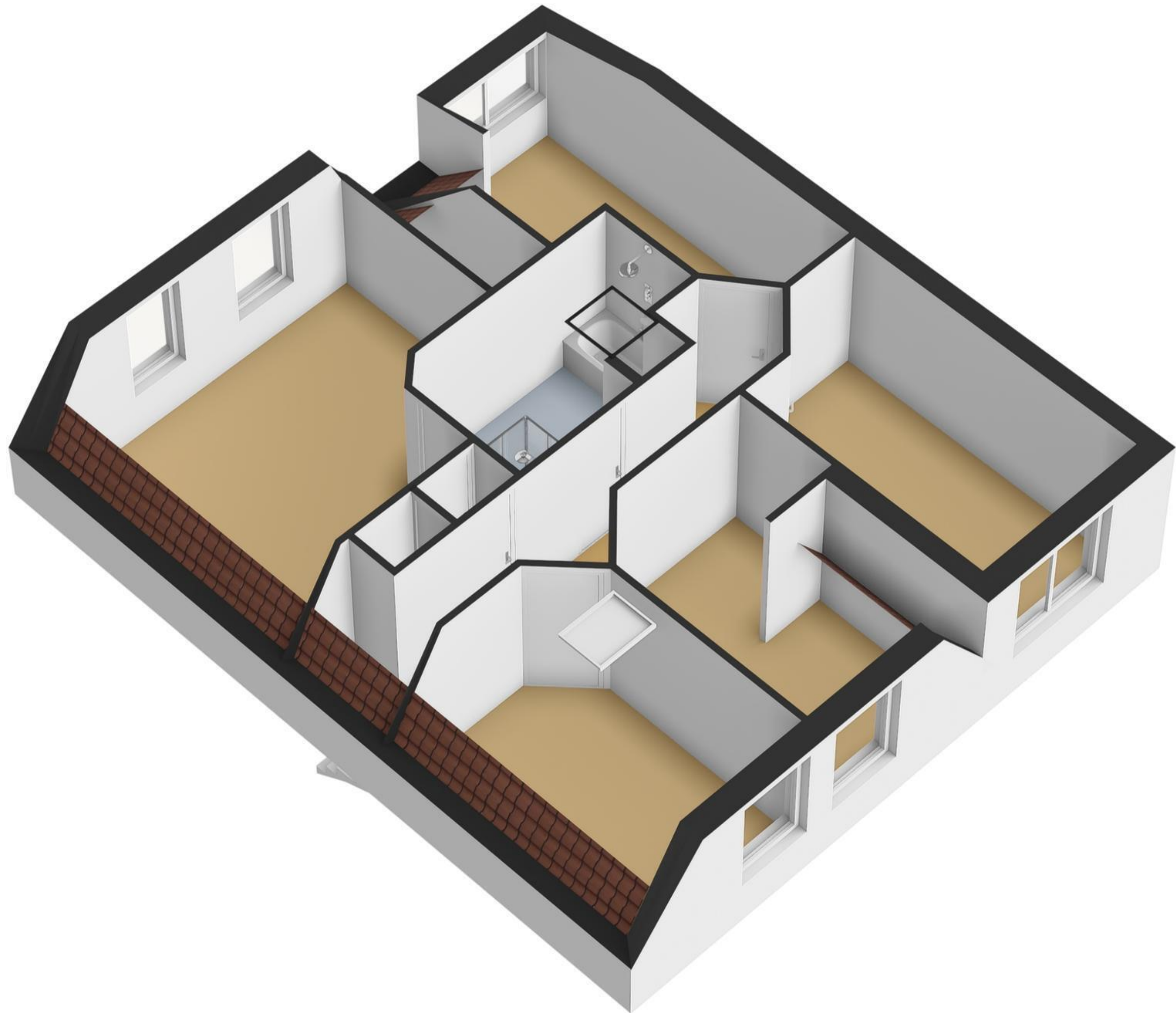


1.08 m 7.18 m

2.63 m 3.88 m

4.50 m

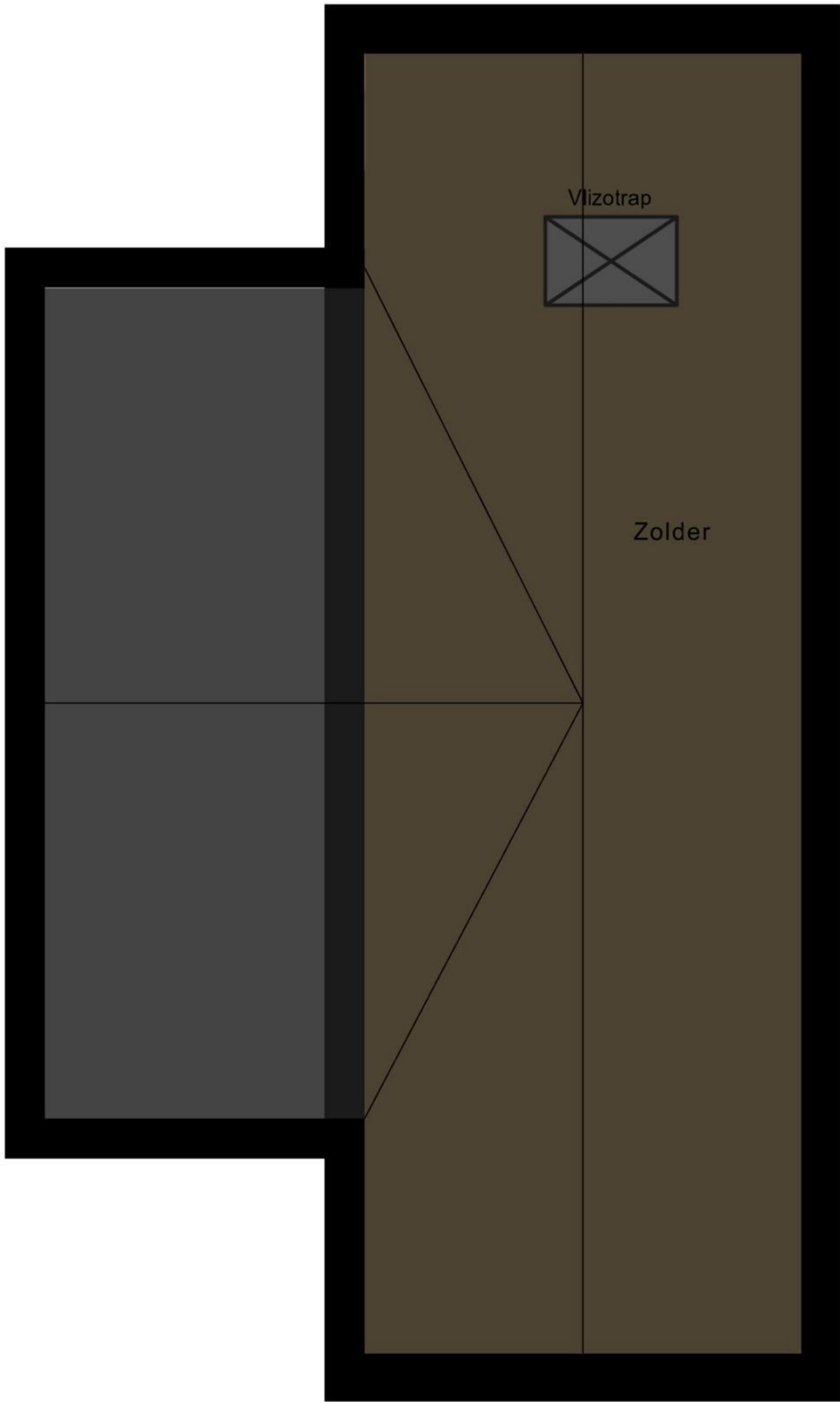
1e Verdieping



← 2.10 m →

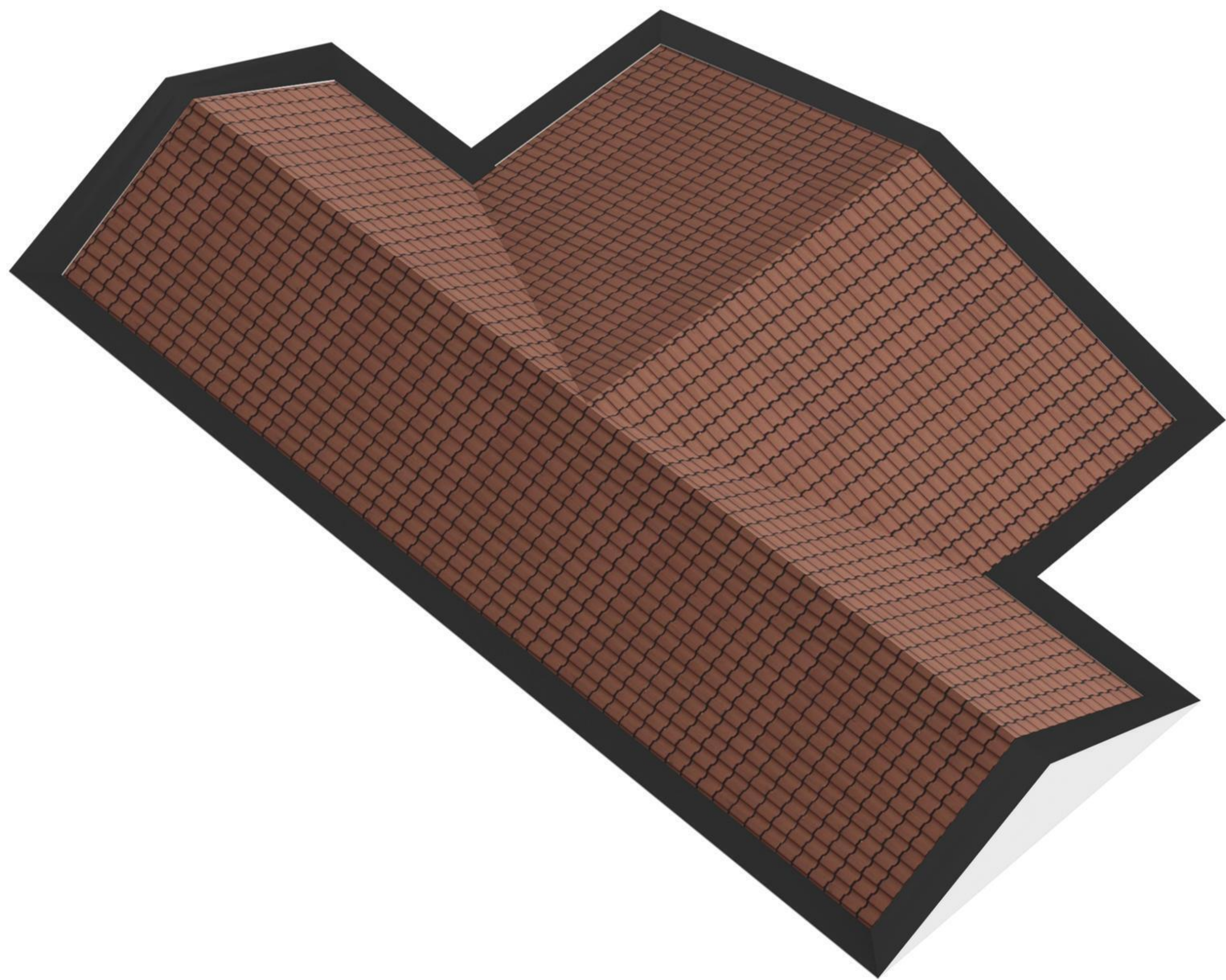
← 3.28 m →

↑ 6.24 m ↓

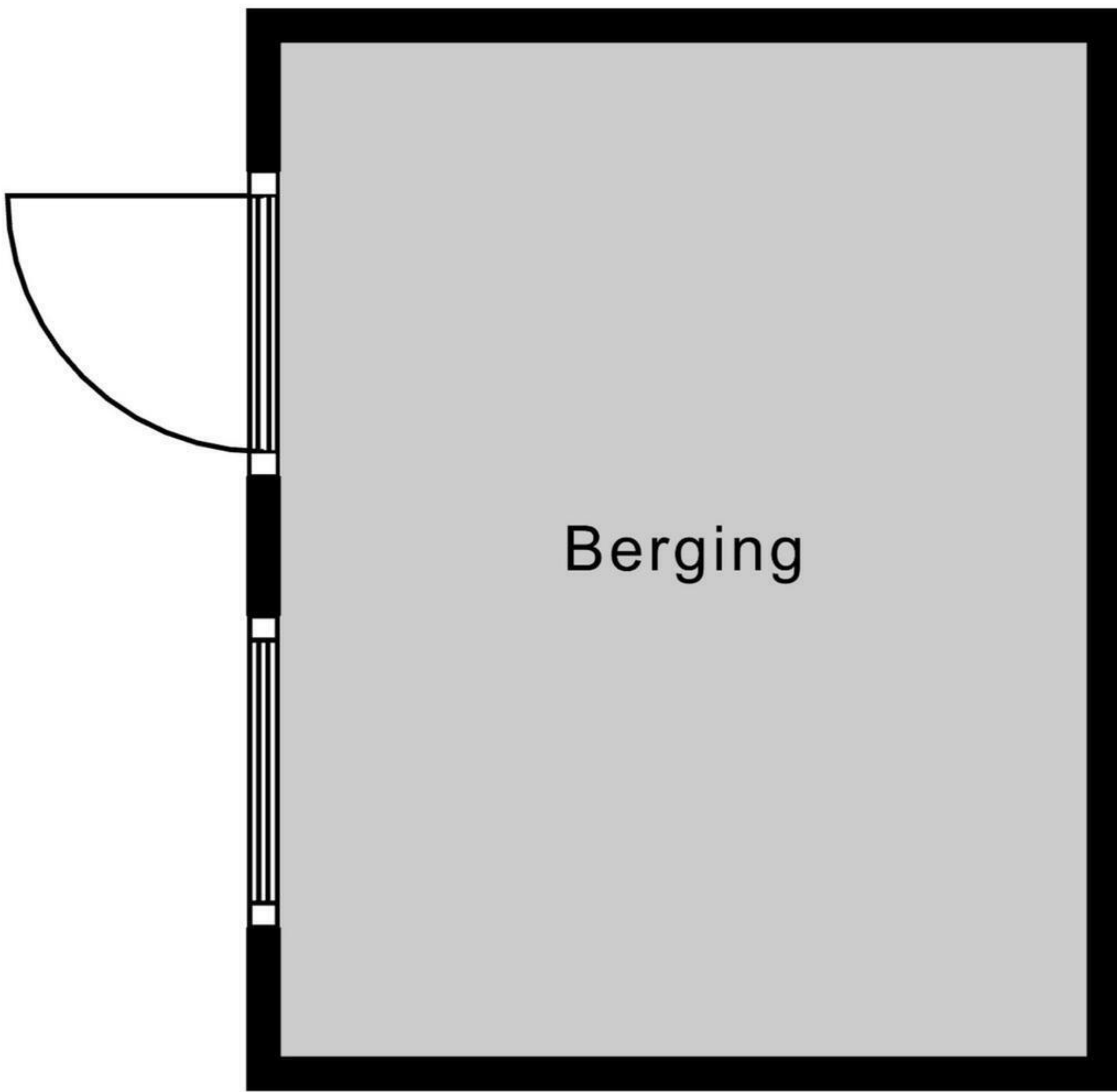


↑ 9.76 m ↓

2e Verdieping



← 2.33 m →



↑
2.93 m
↓

Berging

