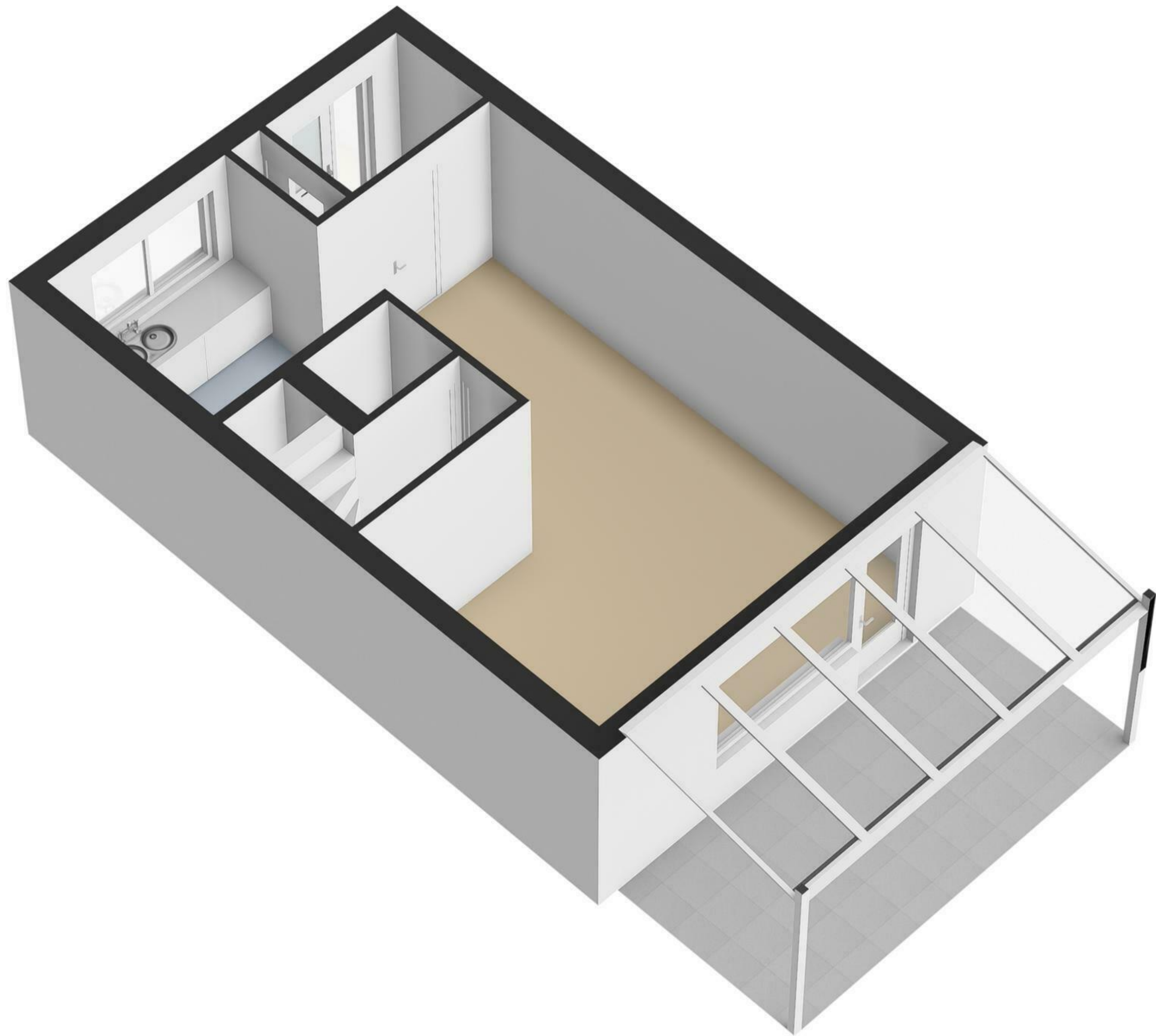


Begane Grond

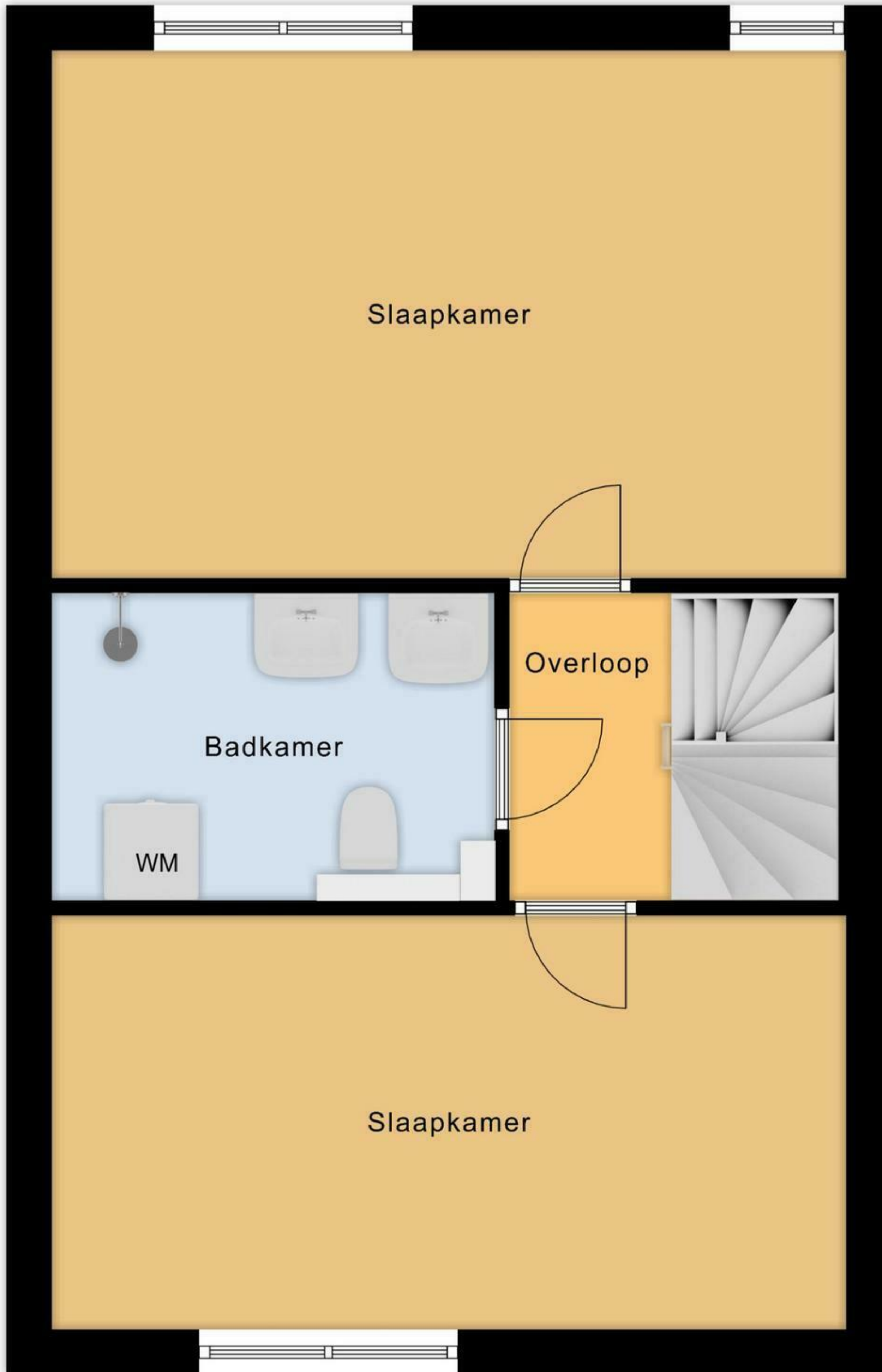


5.22 m

3.47 m

2.02 m

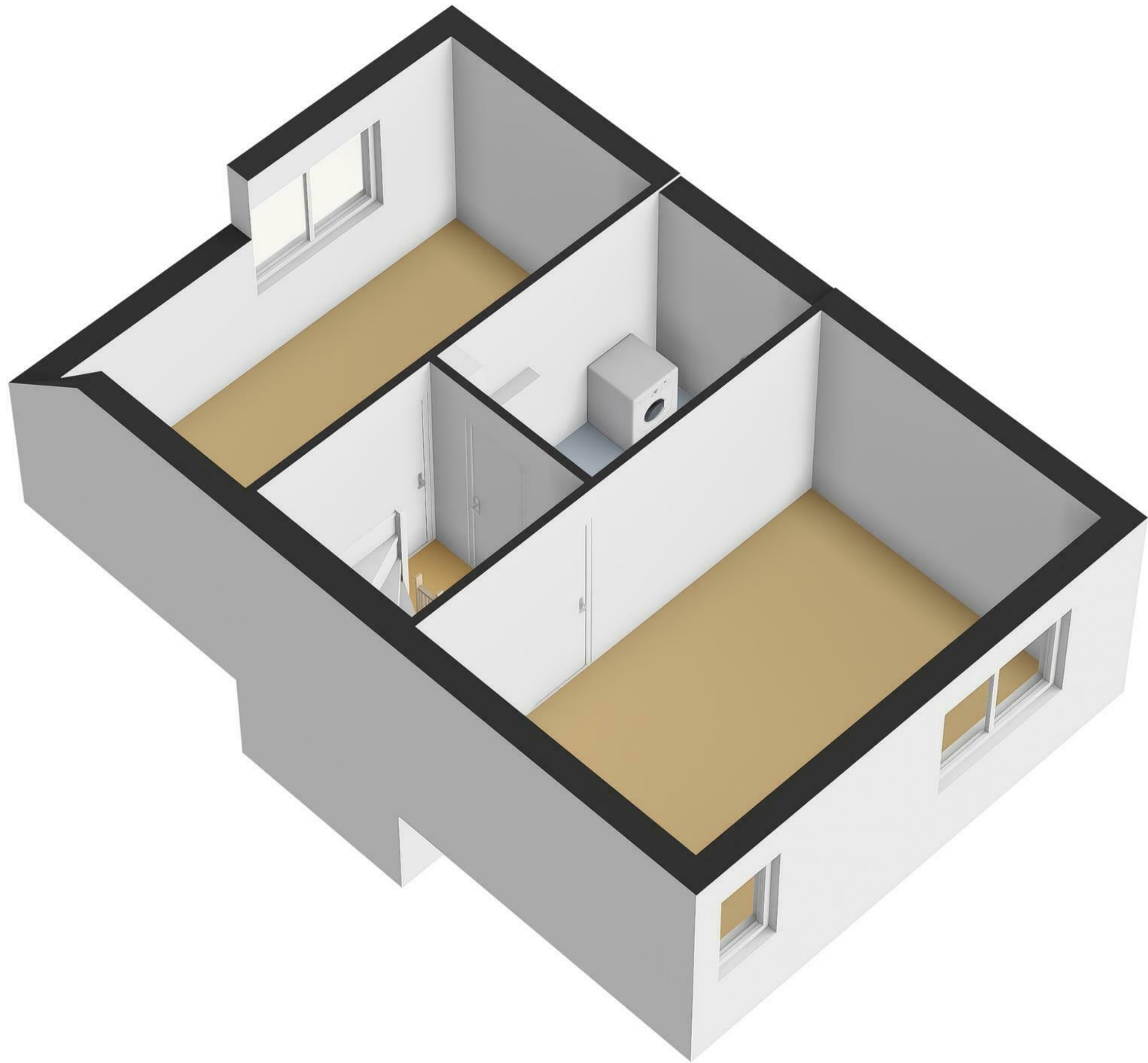
2.72 m



8.41 m

2.91 m 2.21 m

1e Verdieping



2.76 m 2.31 m

2.45 m

3.63 m

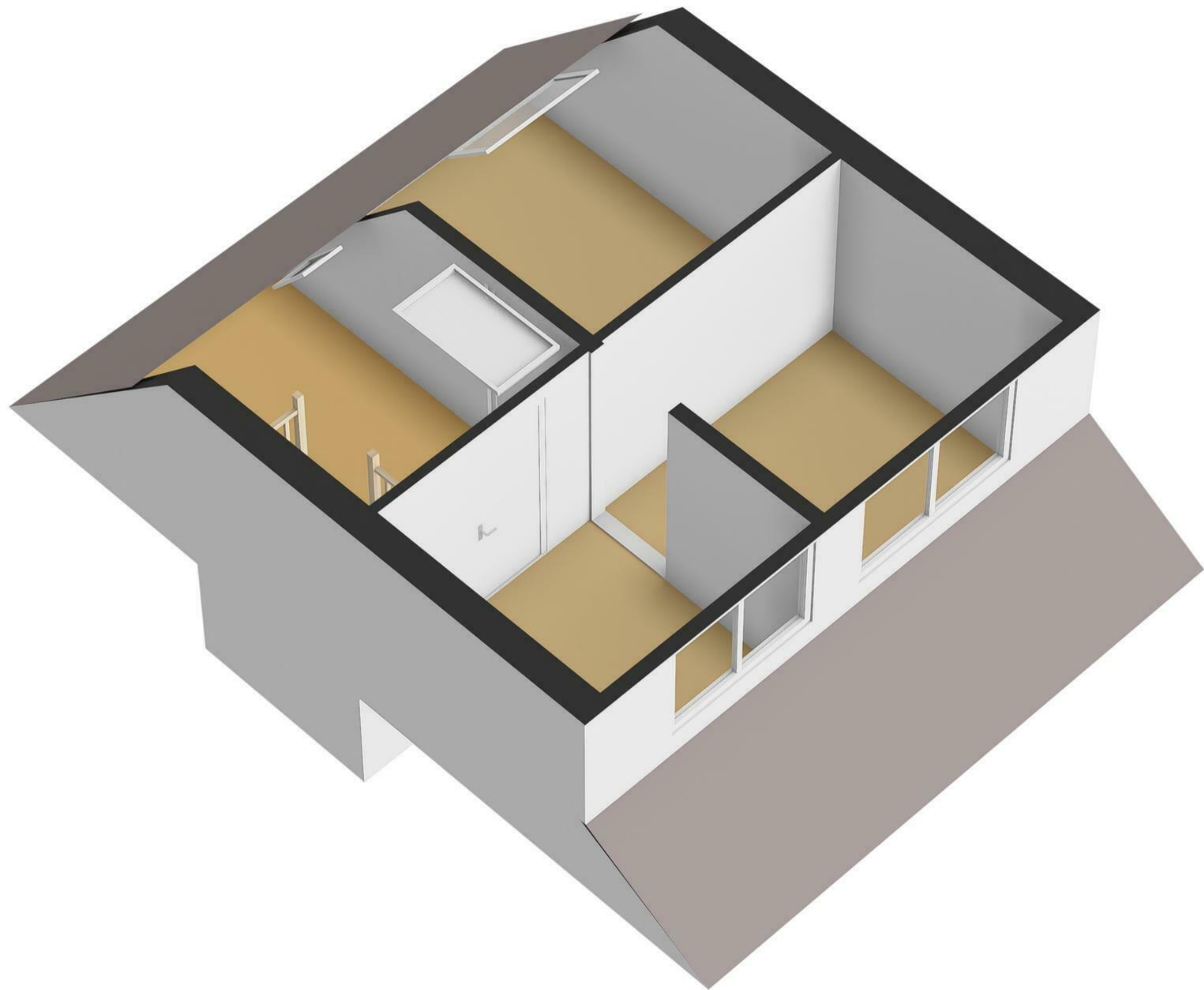


5.24 m

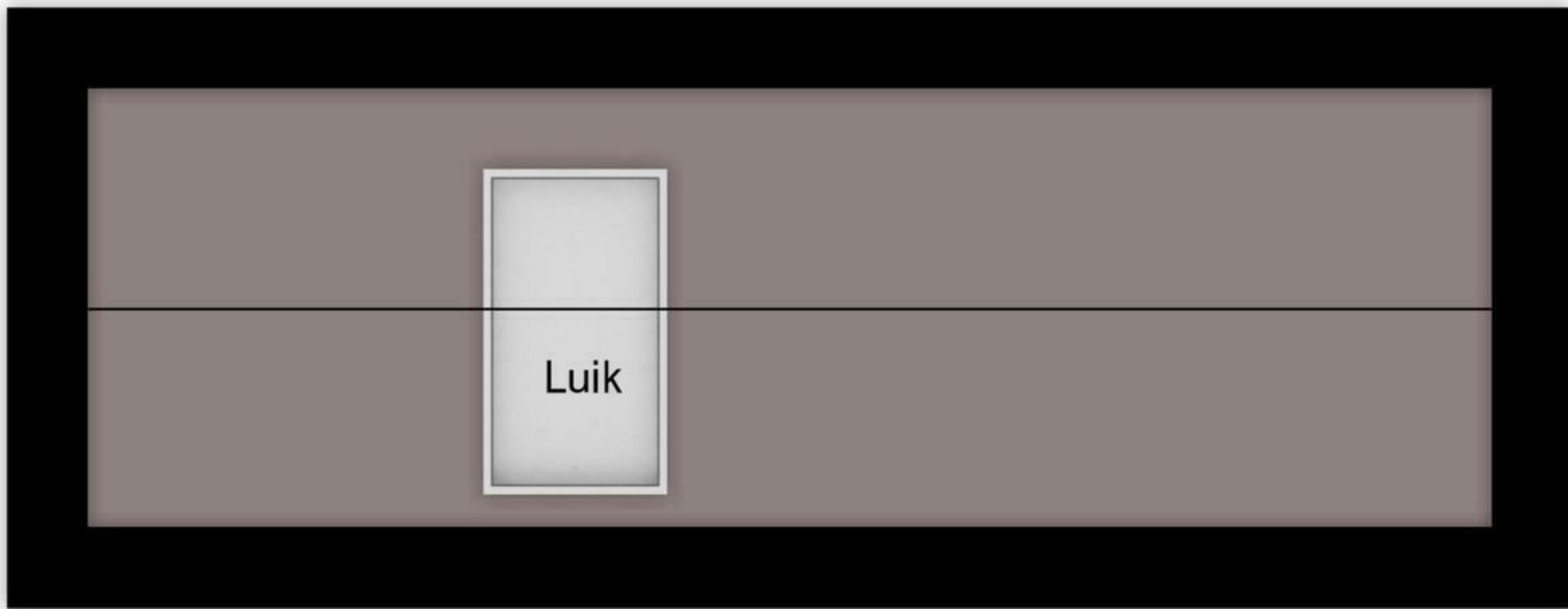
2.59 m

5.22 m

2e Verdieping

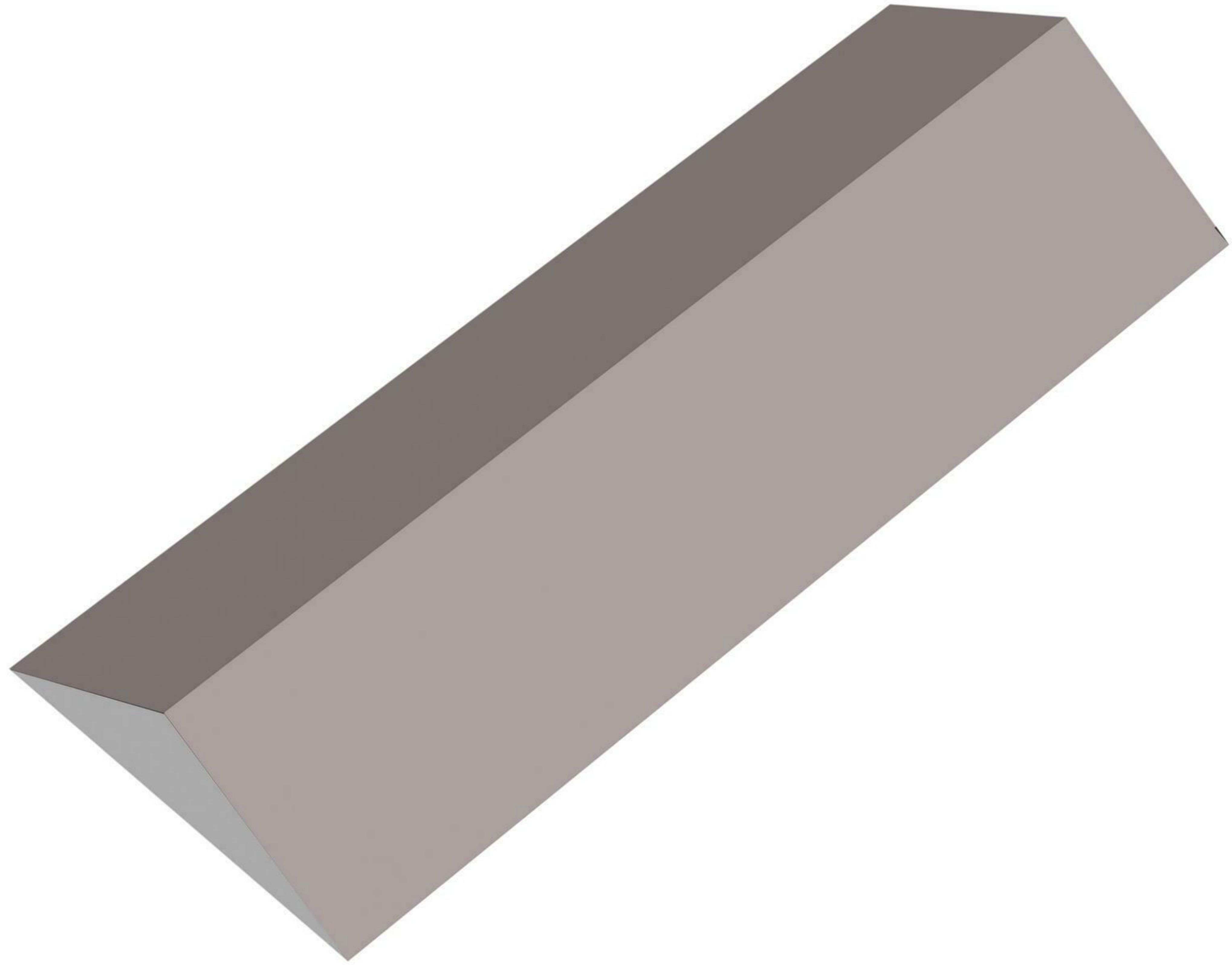


← 5.22 m →



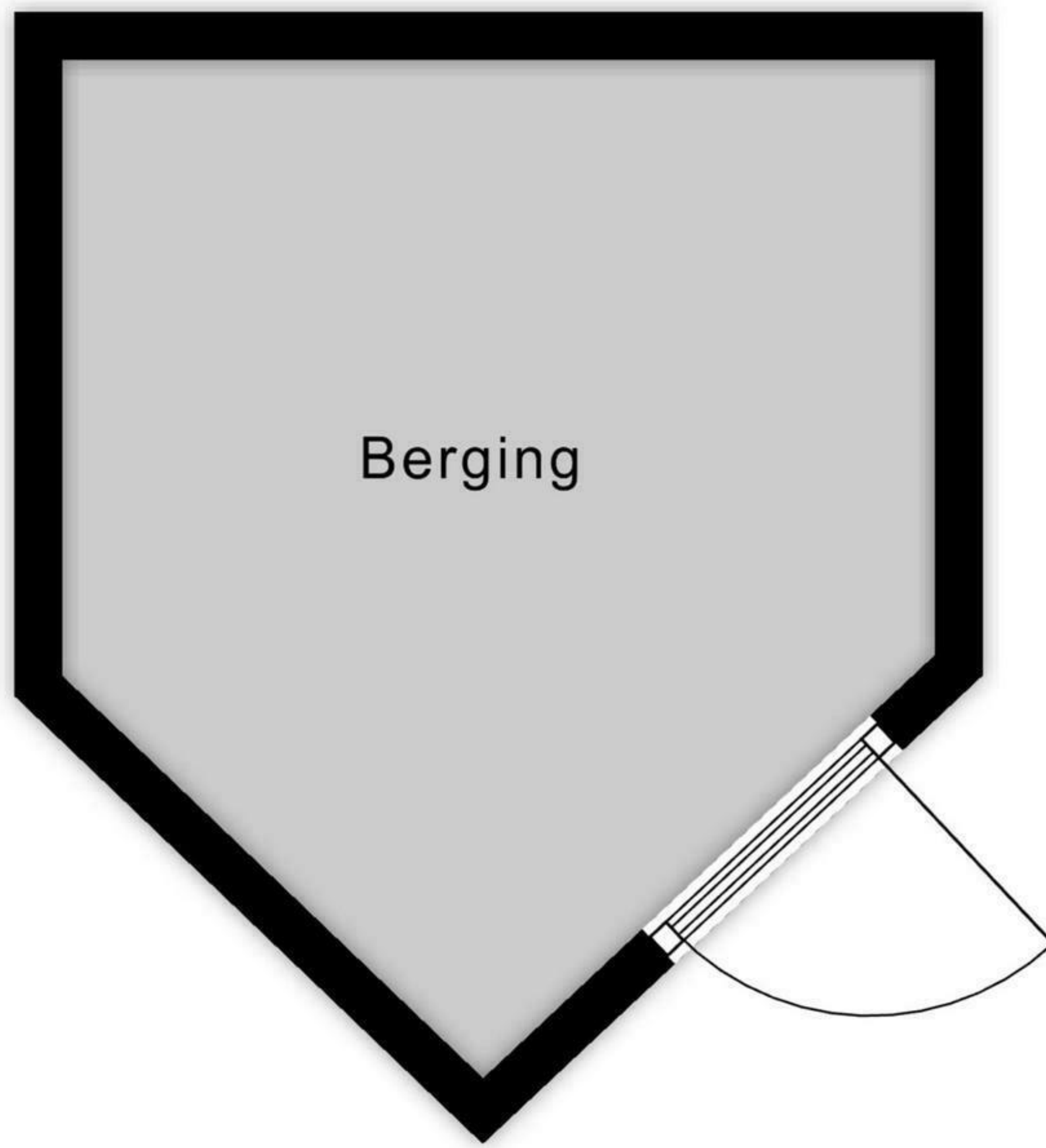
↑
1.63 m
↓

Vliering



← 2.74 m →

↑ 1.93 m ↓



↑ 3.20 m ↓

Berging

