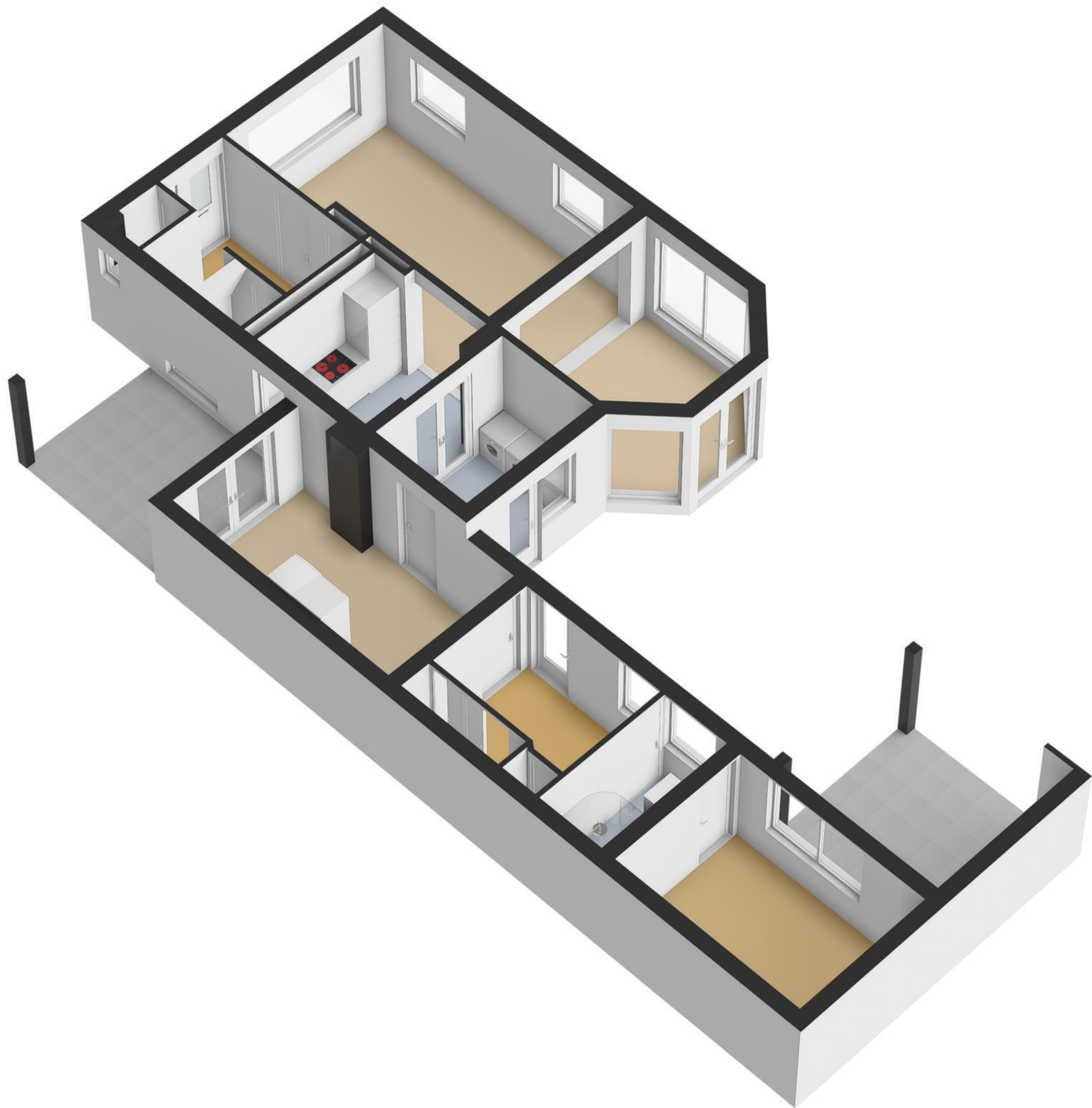




Begane Grond





6.50 m



6.03 m

3.79 m 2.56 m

# Eerste Verdieping



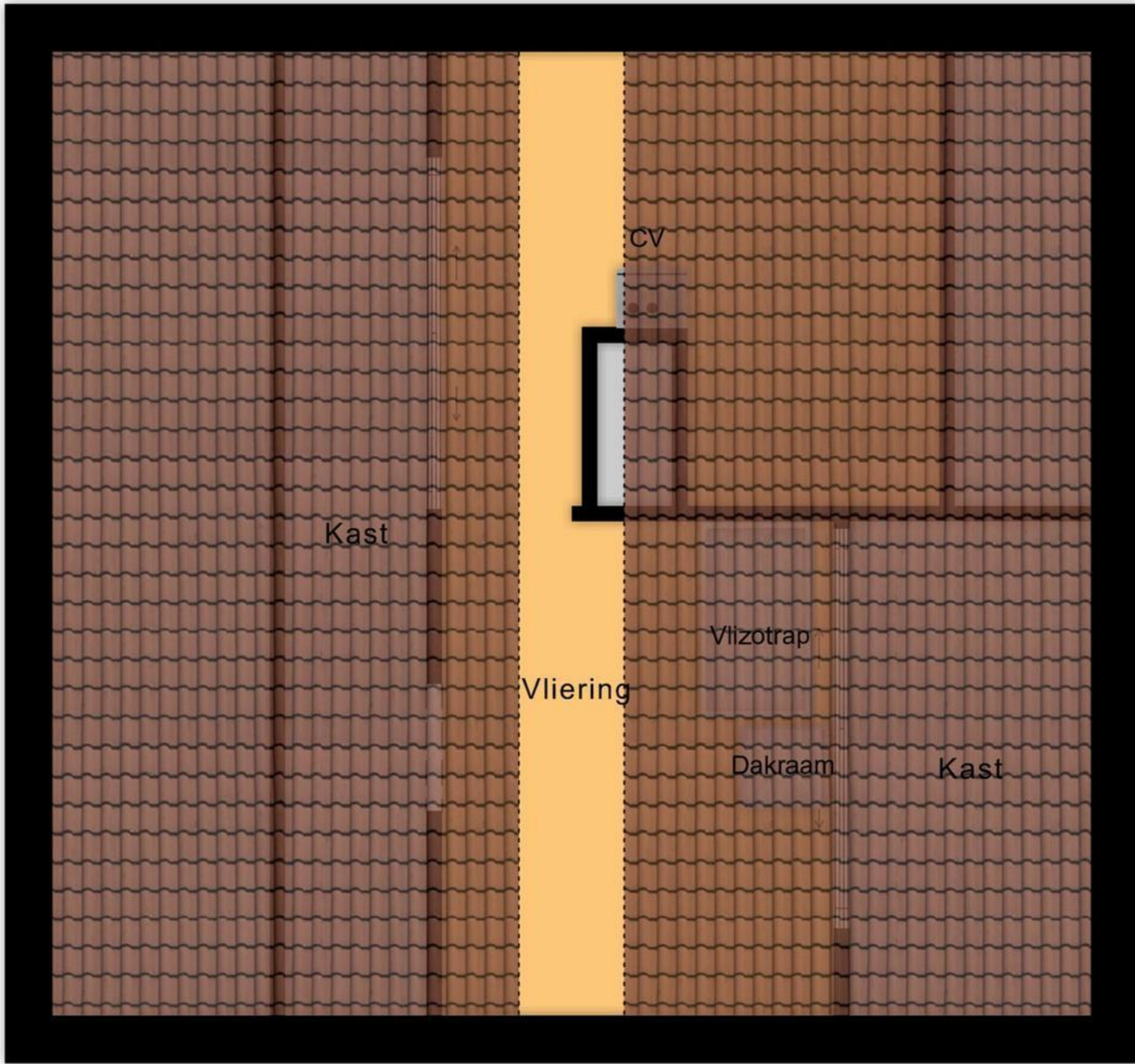




← 1.36 m →

← 3.11 m →

6.03 m



2.84 m

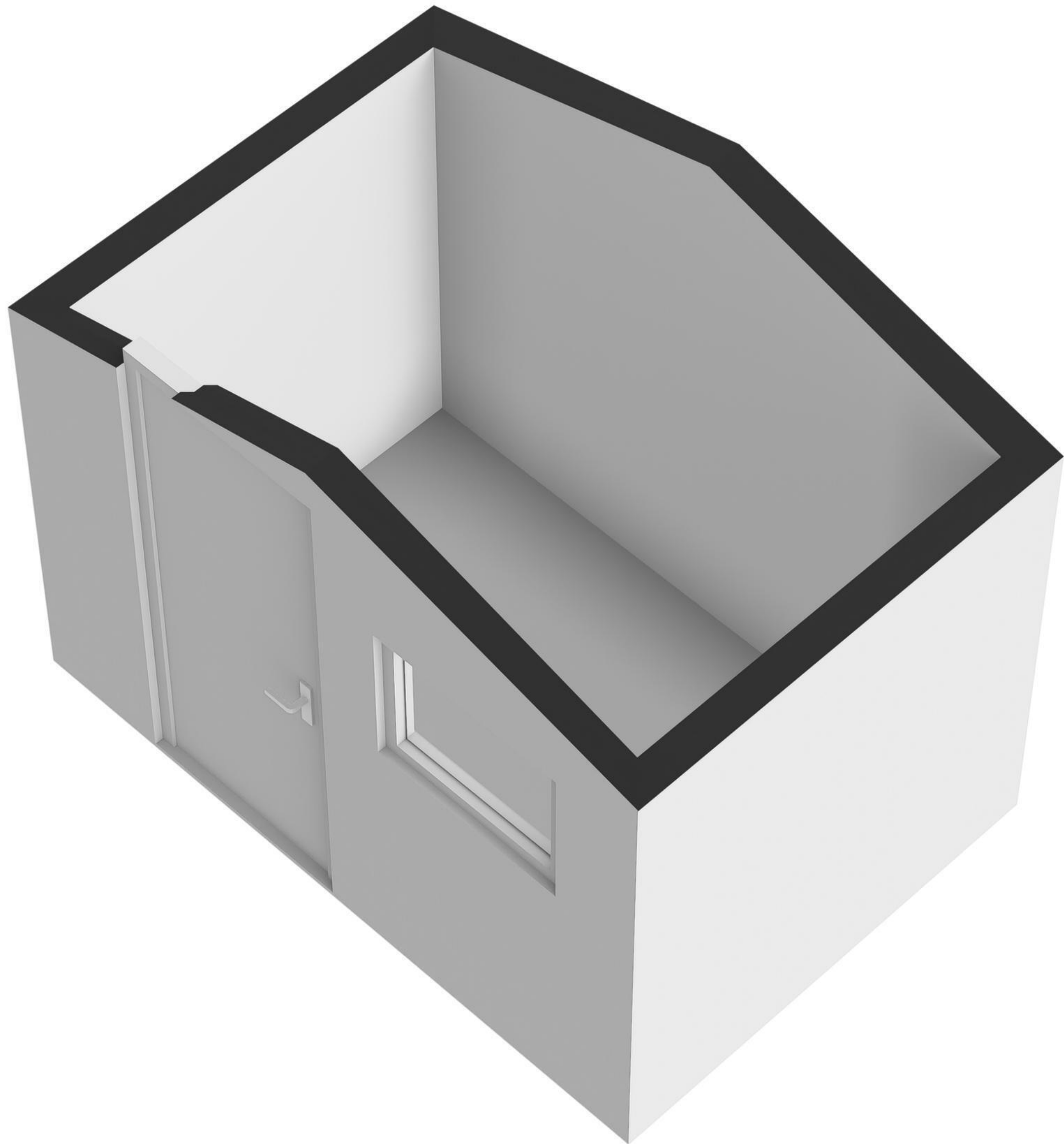
3.09 m

◀ 0.88 m ▶

0.66 m

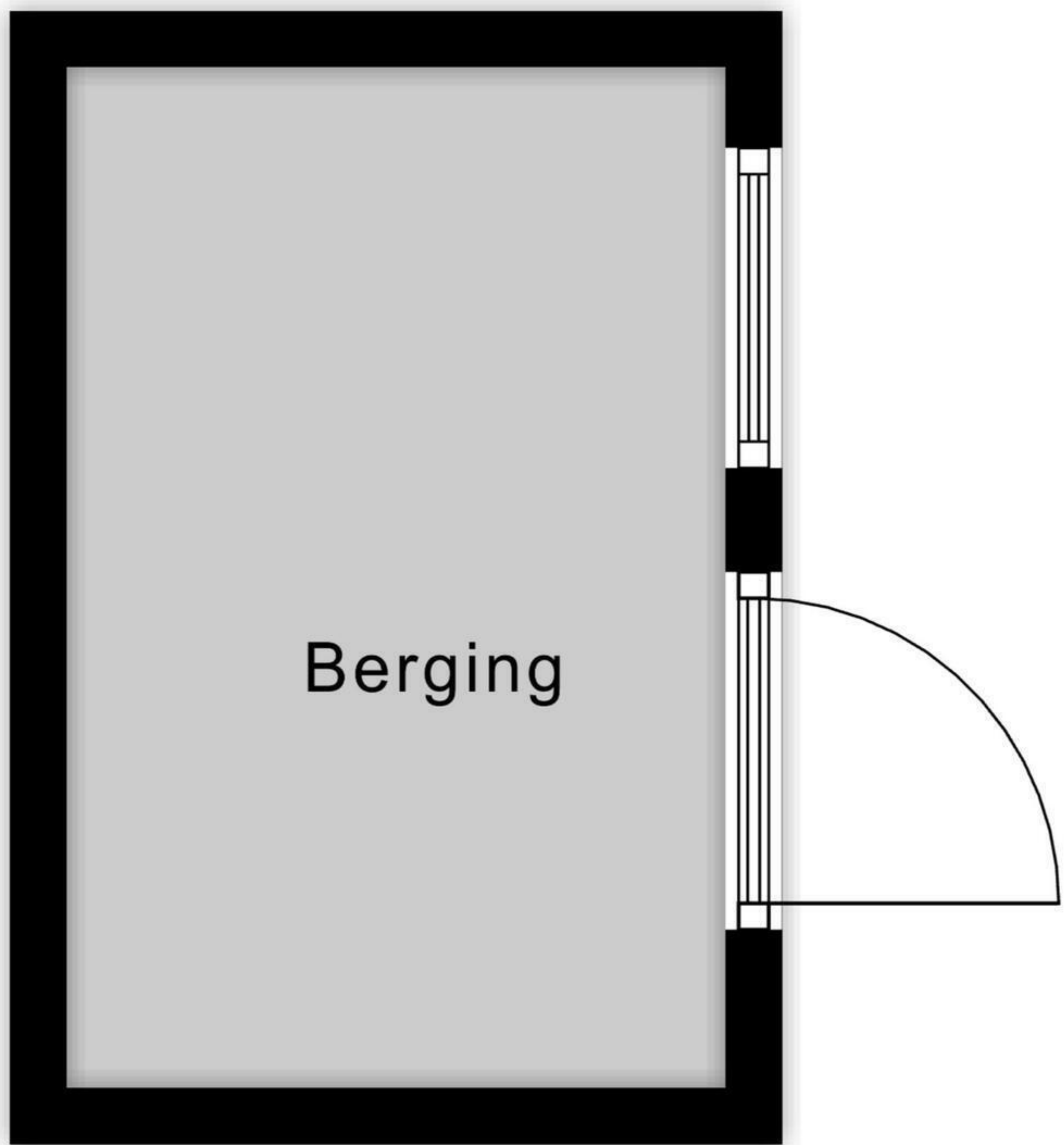
Vliering





← 1.75 m →

↑  
2.71 m  
↓



**Berging**



