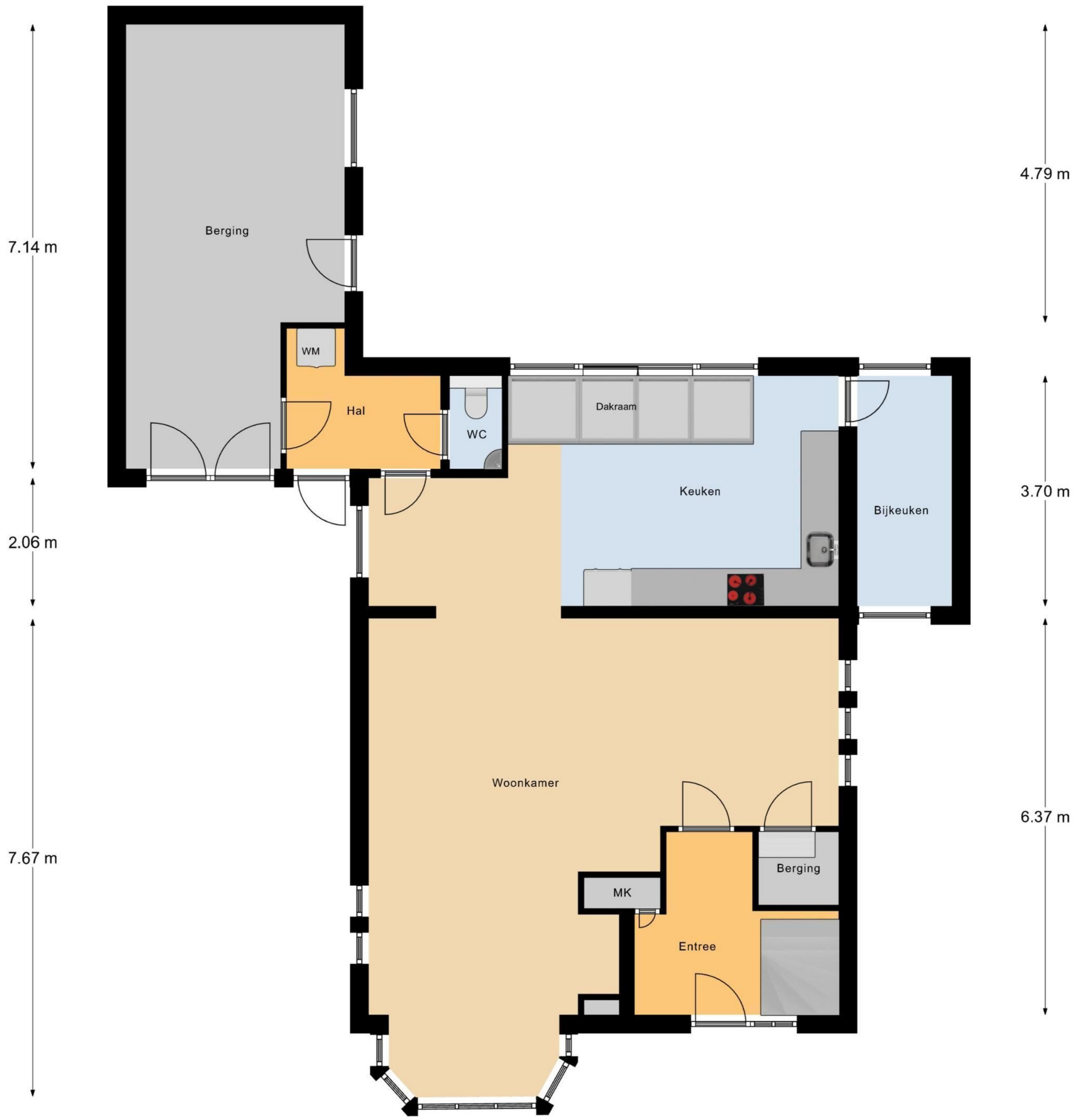


← 2.48 m → ← 2.47 m → 0.84 m ← ← 7.13 m →



← 3.51 m → ← 4.02 m → ← 3.28 m → ← 1.52 m →

← 7.55 m →

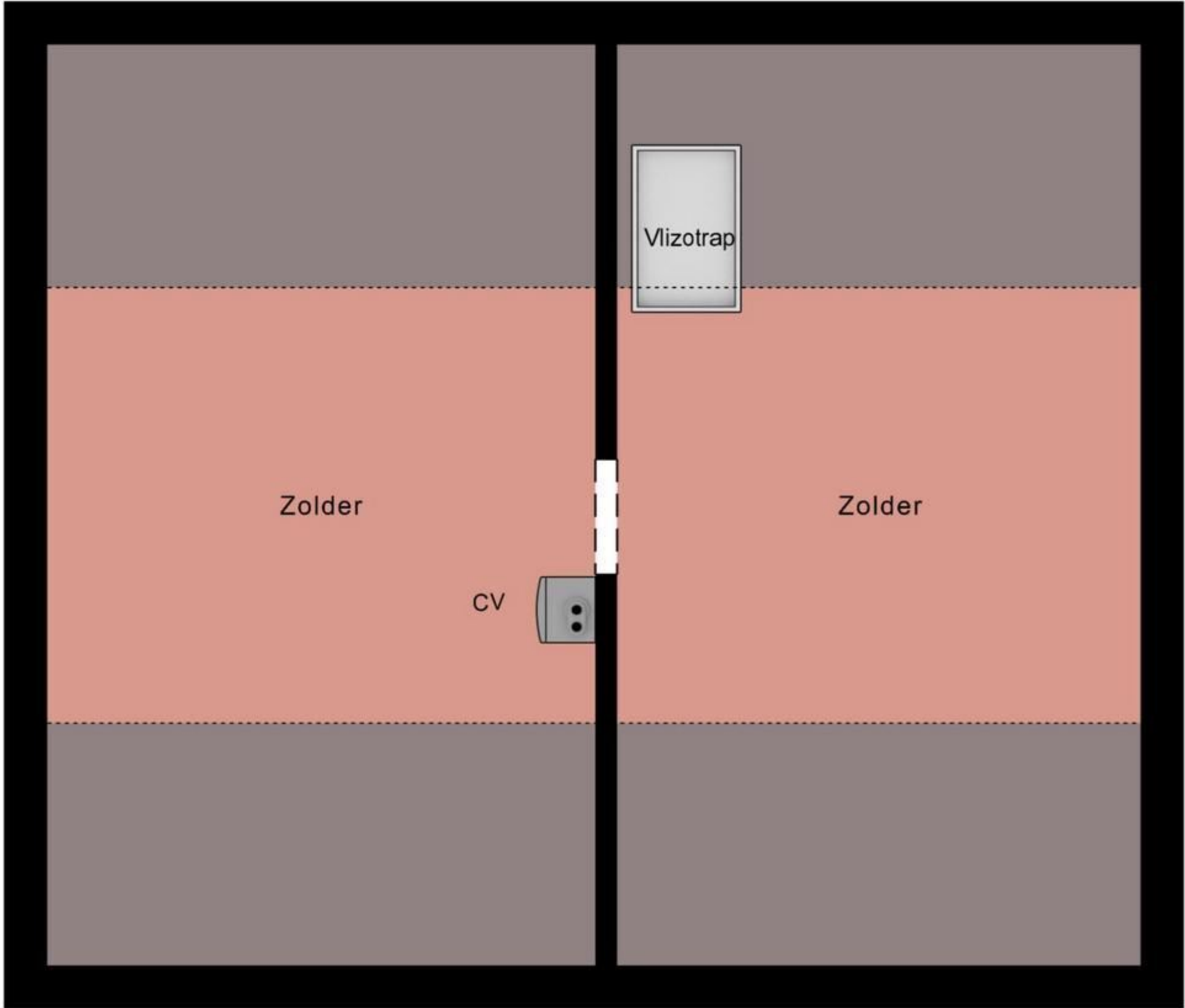
Begane Grond



Eerste Verdieping

3.79 m      3.62 m

6.37 m



3.00 m

7.56 m

Tweede Verdieping





Begane Grond Tuin



