



Begane Grond

6.26 m



3.92 m

2.96 m

Slaapkamer

Slaapkamer

Kast

Kast

Overloop

2.54 m

7.70 m

3.67 m

Slaapkamer

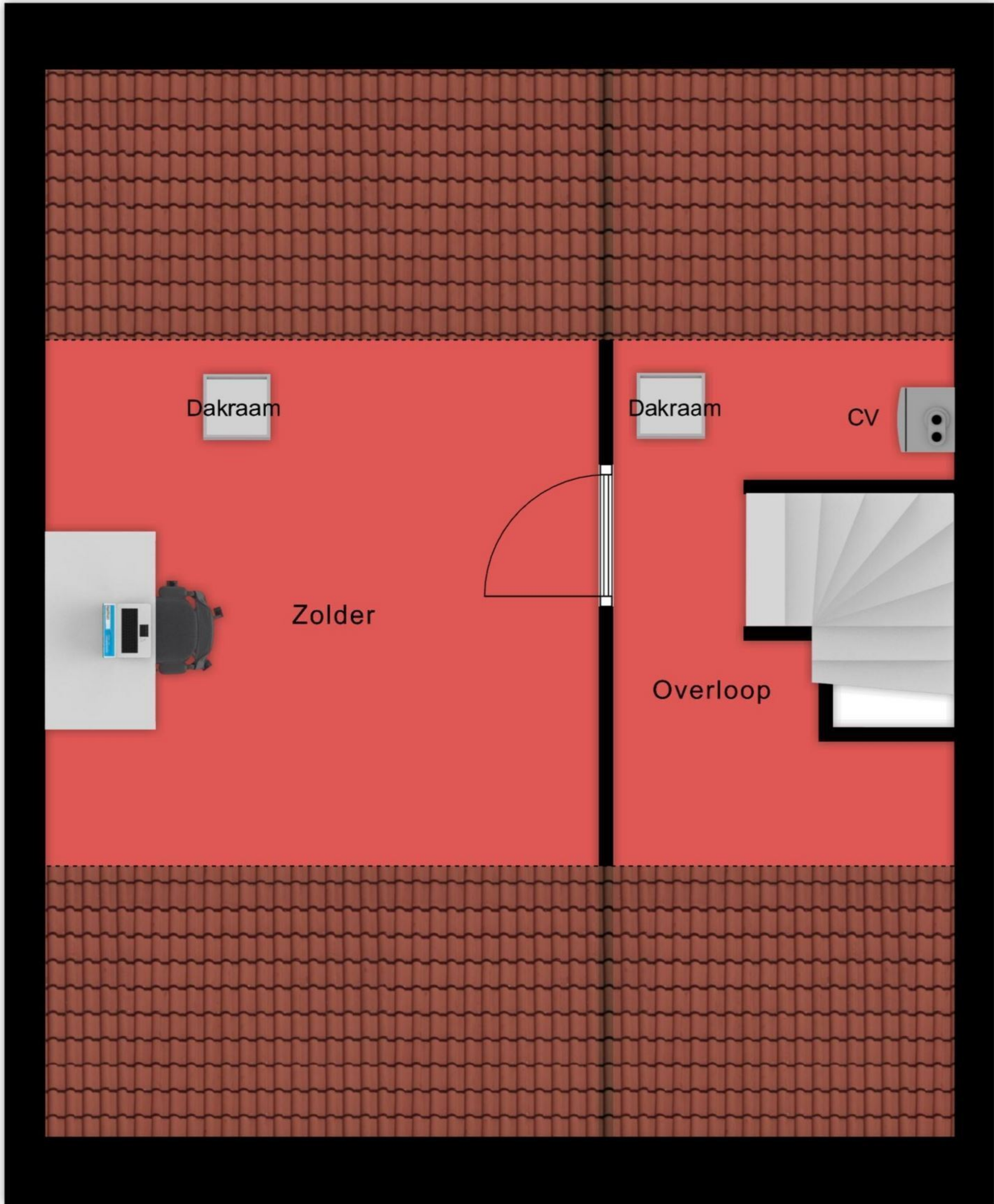
Badkamer

2.00 m

3.85 m 2.31 m

1e Verdieping

3.83 m 2.35 m



7.37 m

2.83 m

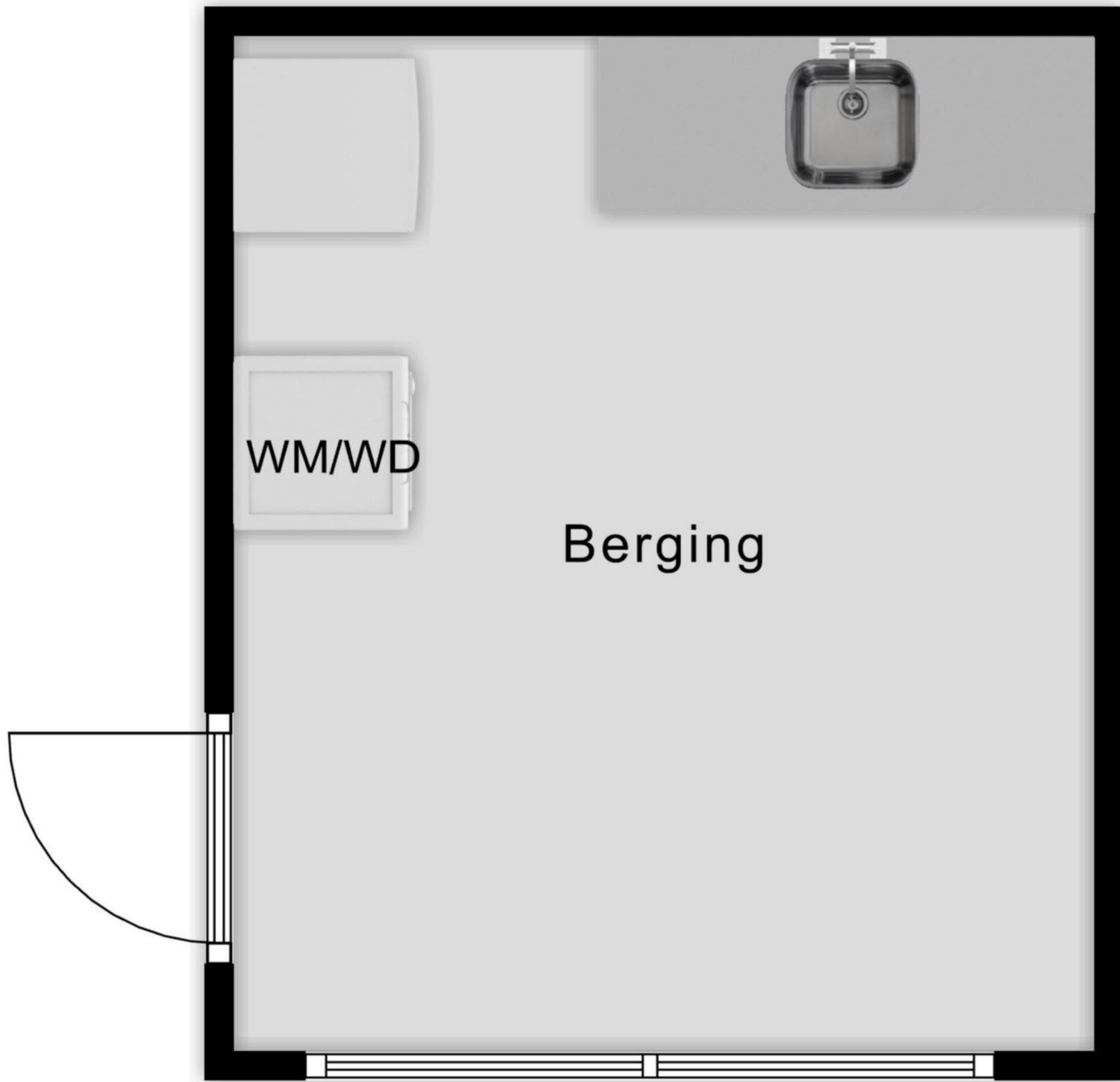
1.61 m

2.73 m

6.28 m

2e Verdieping

← 2.95 m →



↑ 3.48 m ↓

Berging

