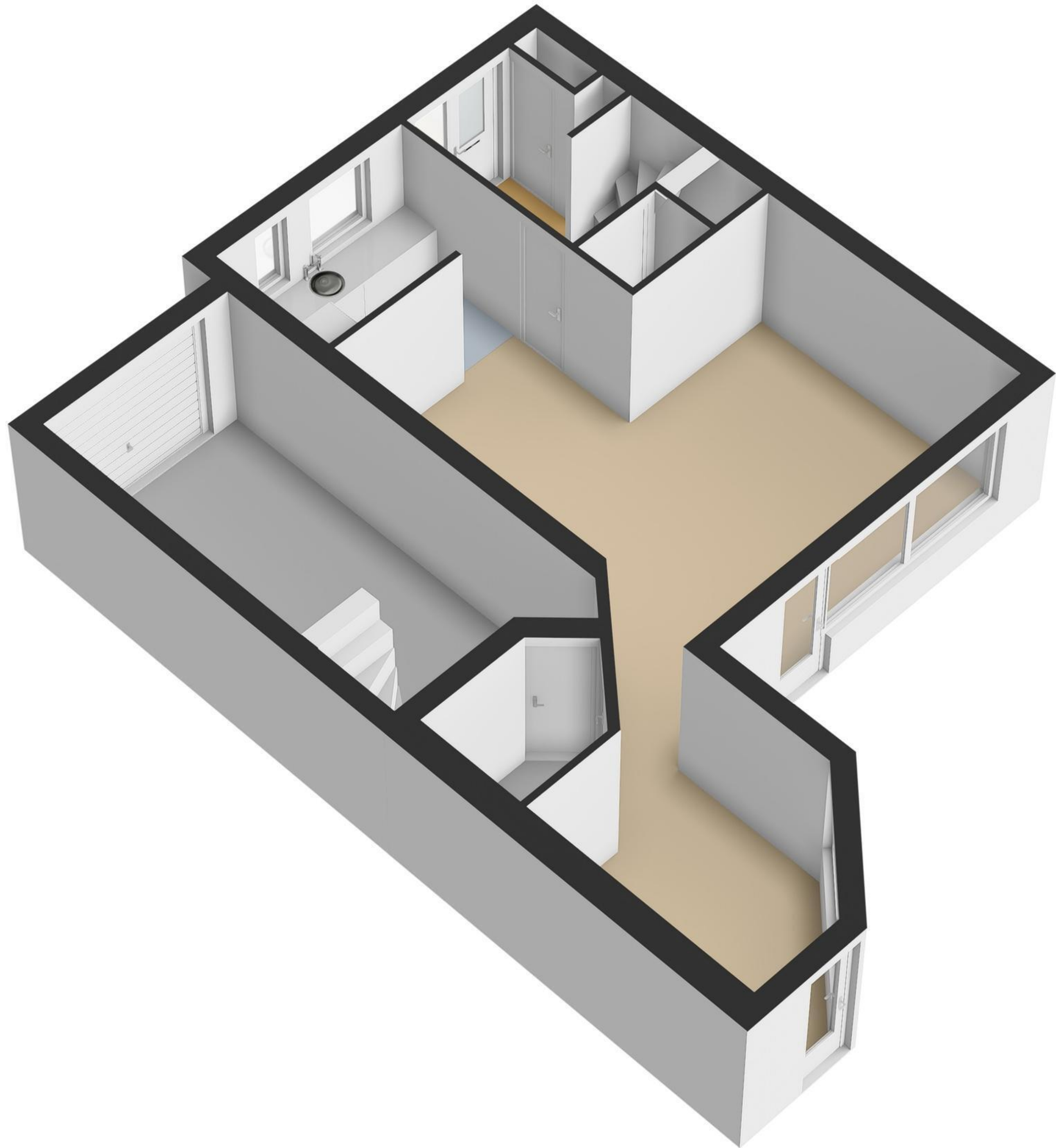




Begane Grond





5.53 m

2.32 m 3.06 m



2.79 m 2.59 m 2.99 m

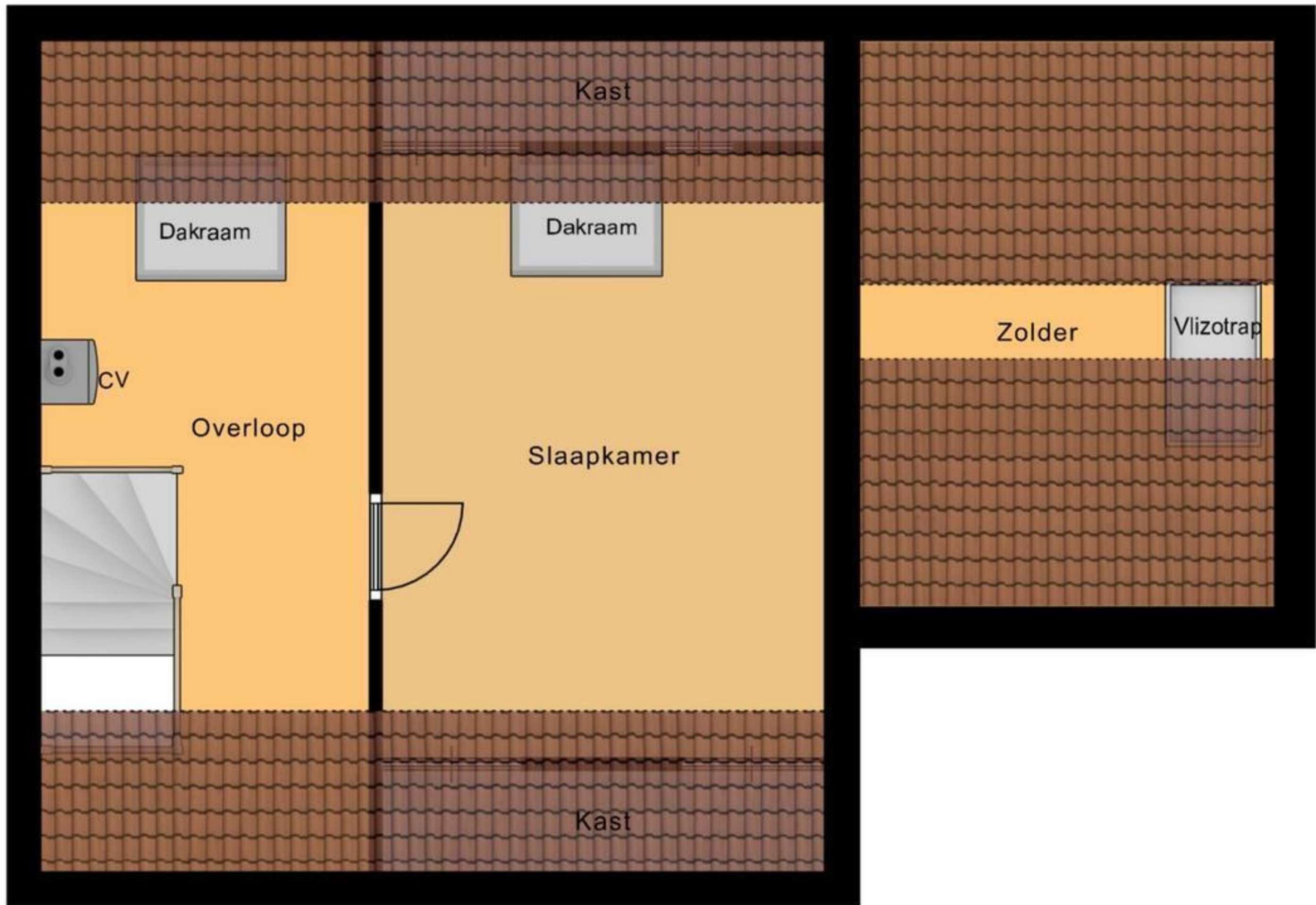
1e Verdieping







← 2.33 m →   ← 3.15 m →   ← 2.95 m →



5.92 m

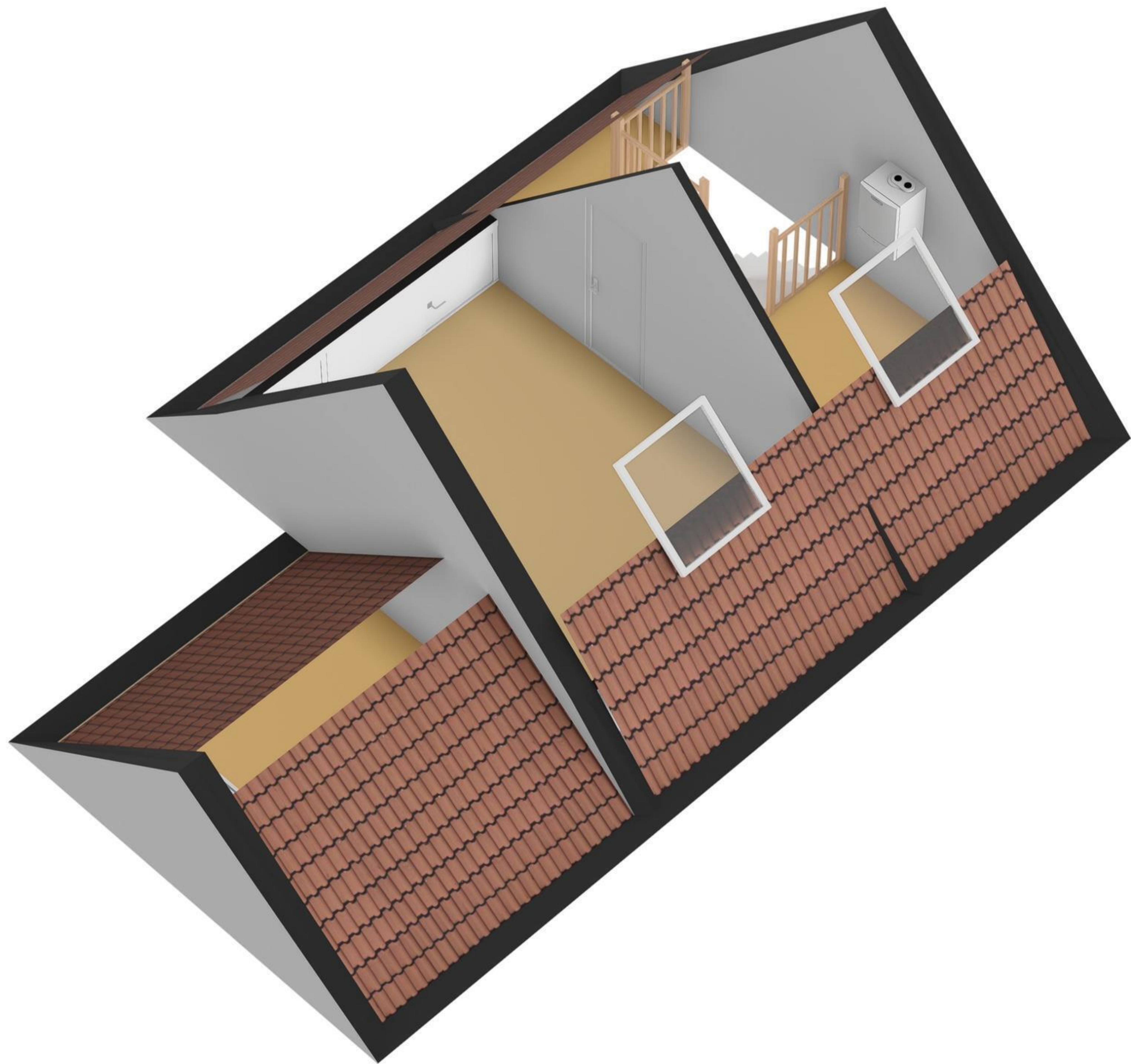
3.63 m

4.03 m

← 5.58 m →

2e Verdieping







← 2.60 m →



↑  
3.60 m  
↓

Overkapping

