

3.27 m 2.06 m

4.96 m
4.83 m



9.94 m

2.59 m

4.41 m 0.92 m

5.43 m

Begane Grond



← 5.25 m →

← 4.08 m →

← 3.67 m → 0.65 m

2.88 m

3.10 m

5.80 m

3.82 m

4.18 m

10.00 m

2.74 m



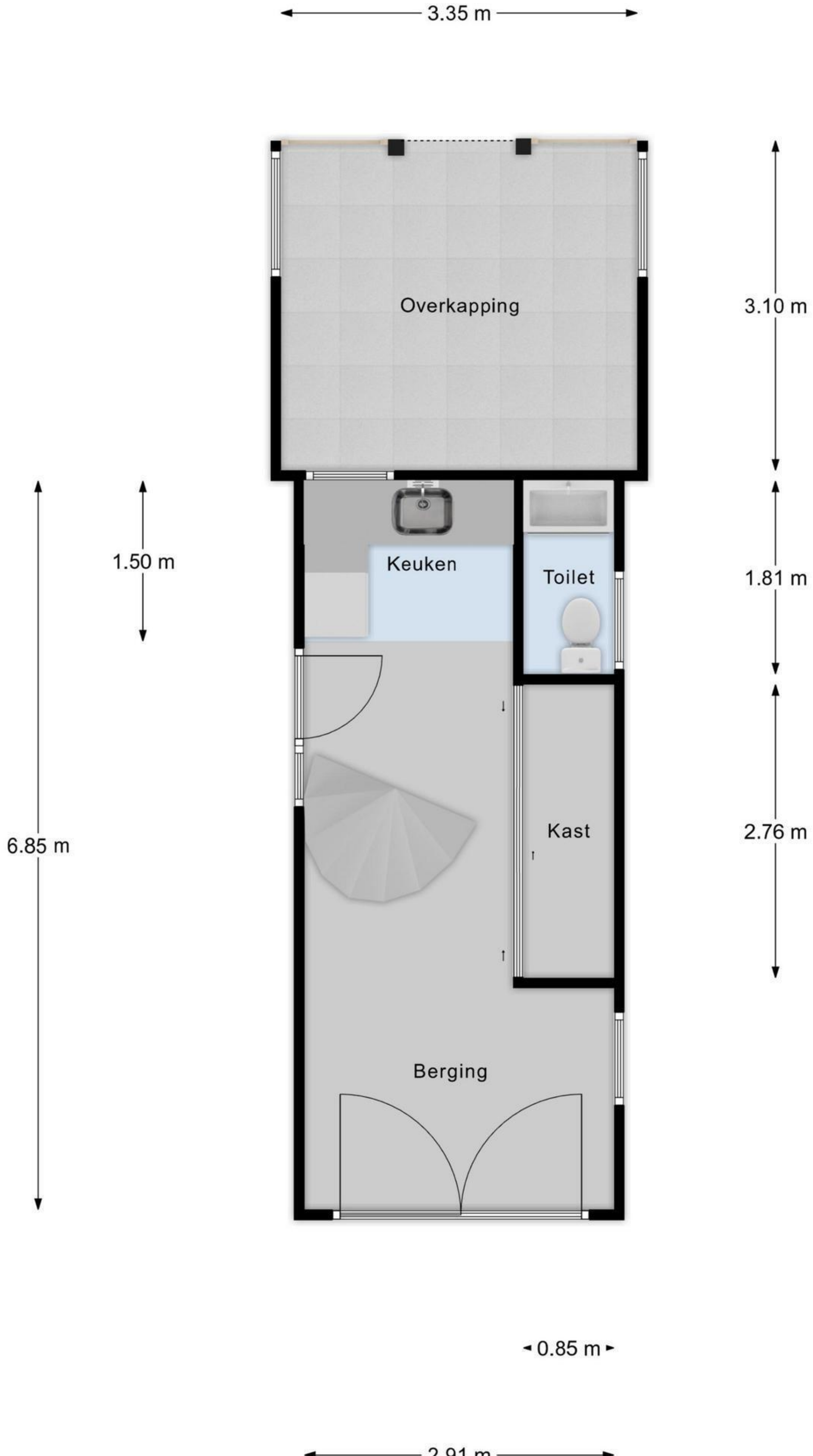
← 1.30 m →

← 1.30 m →

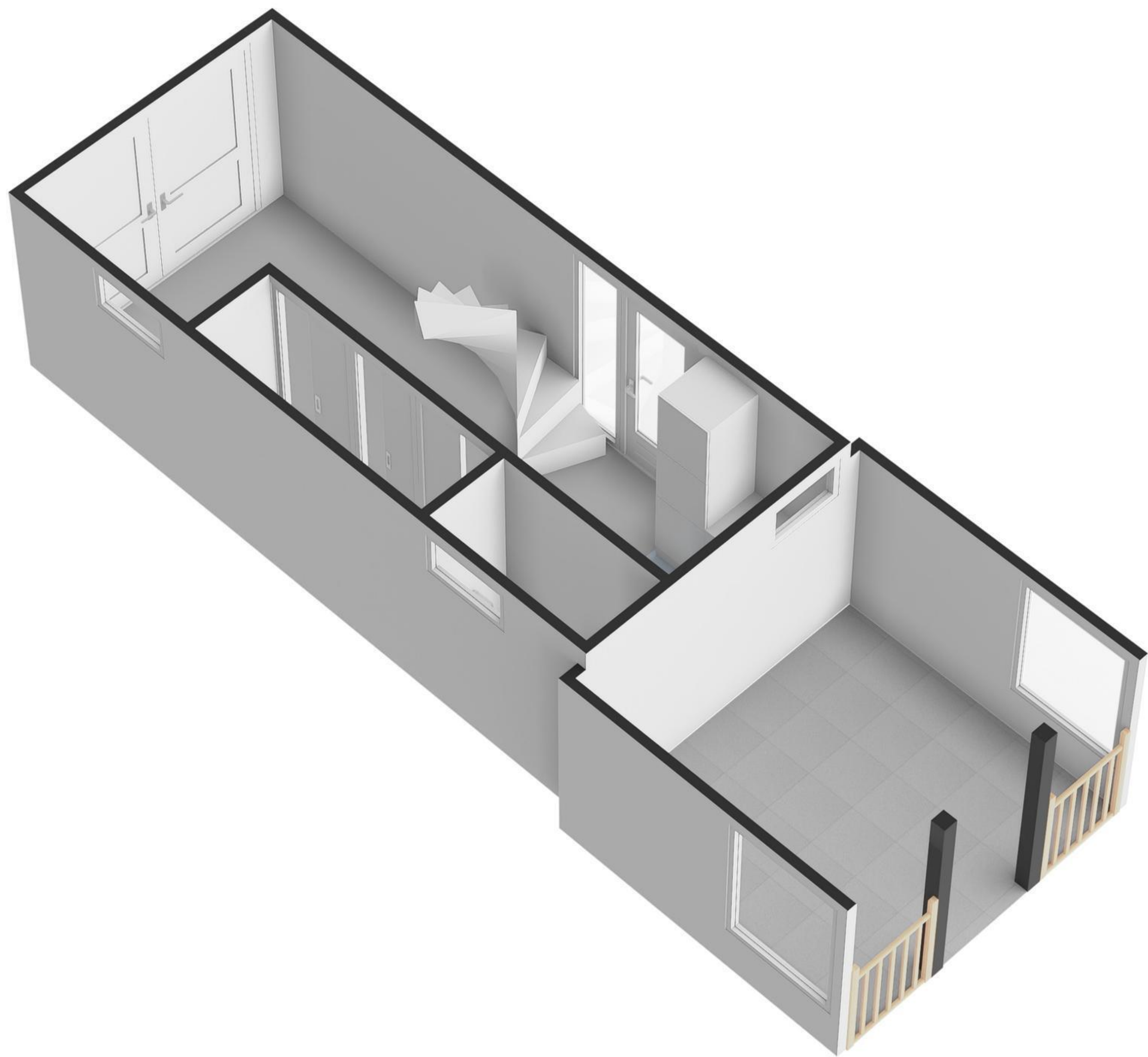
← 3.00 m → 2.15 m →

1e Verdieping



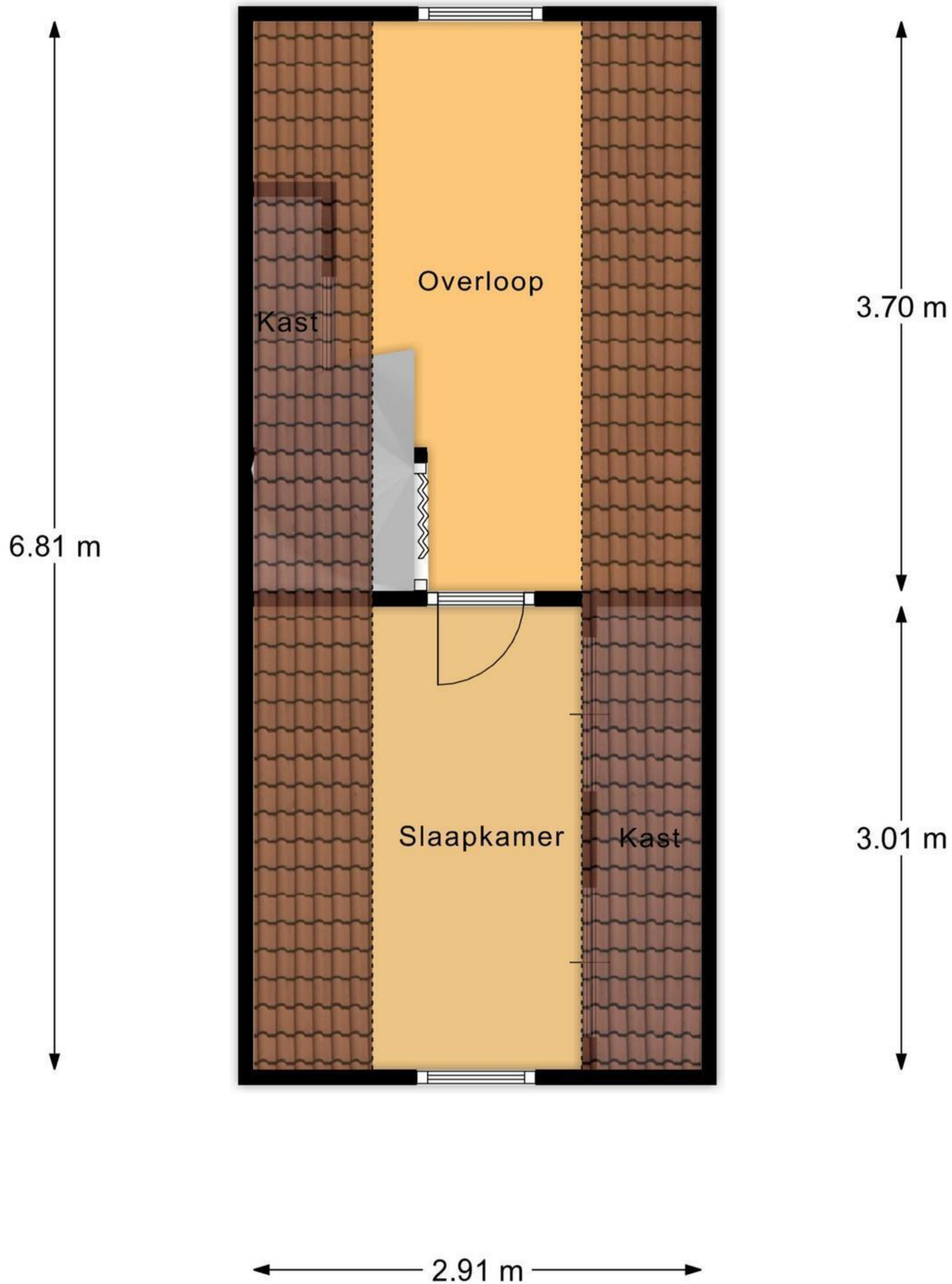


Bijgebouw Begane Grond



← 2.37 m →

← 1.36 m →



Bijgebouw Verdieping

