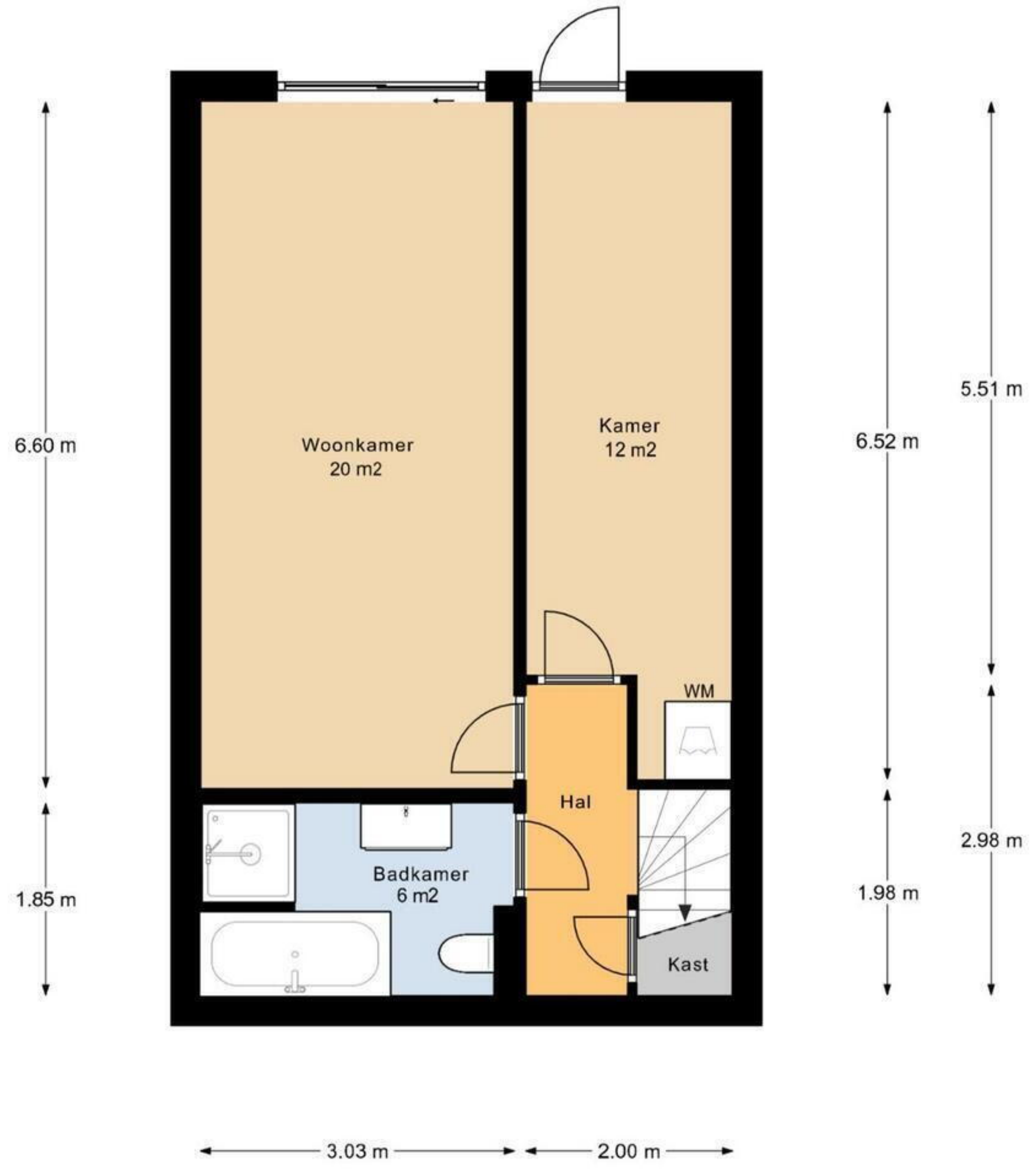
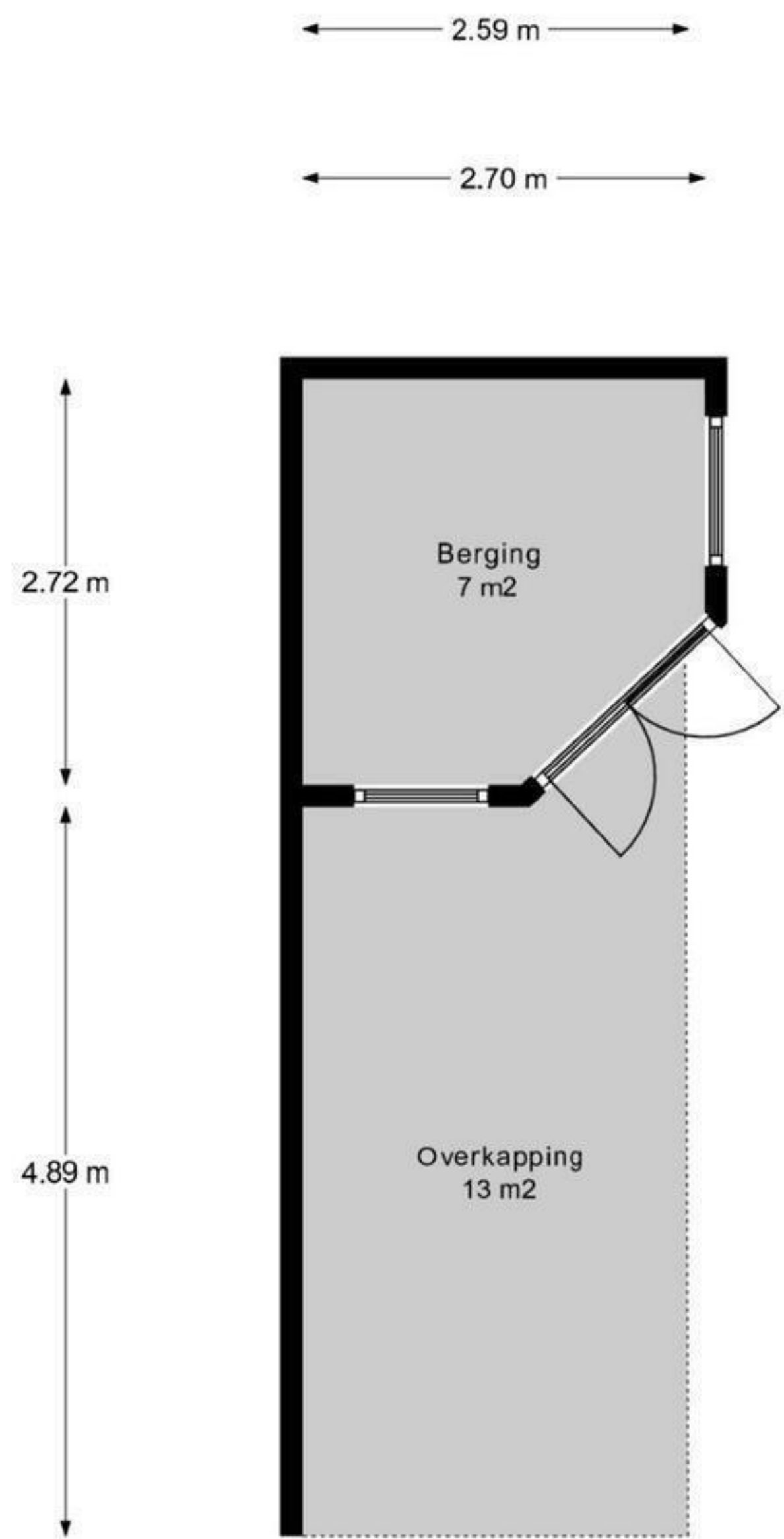


Begane Grond



Souterrain

← 5.08 m →

← 2.91 m → ← 1.92 m →



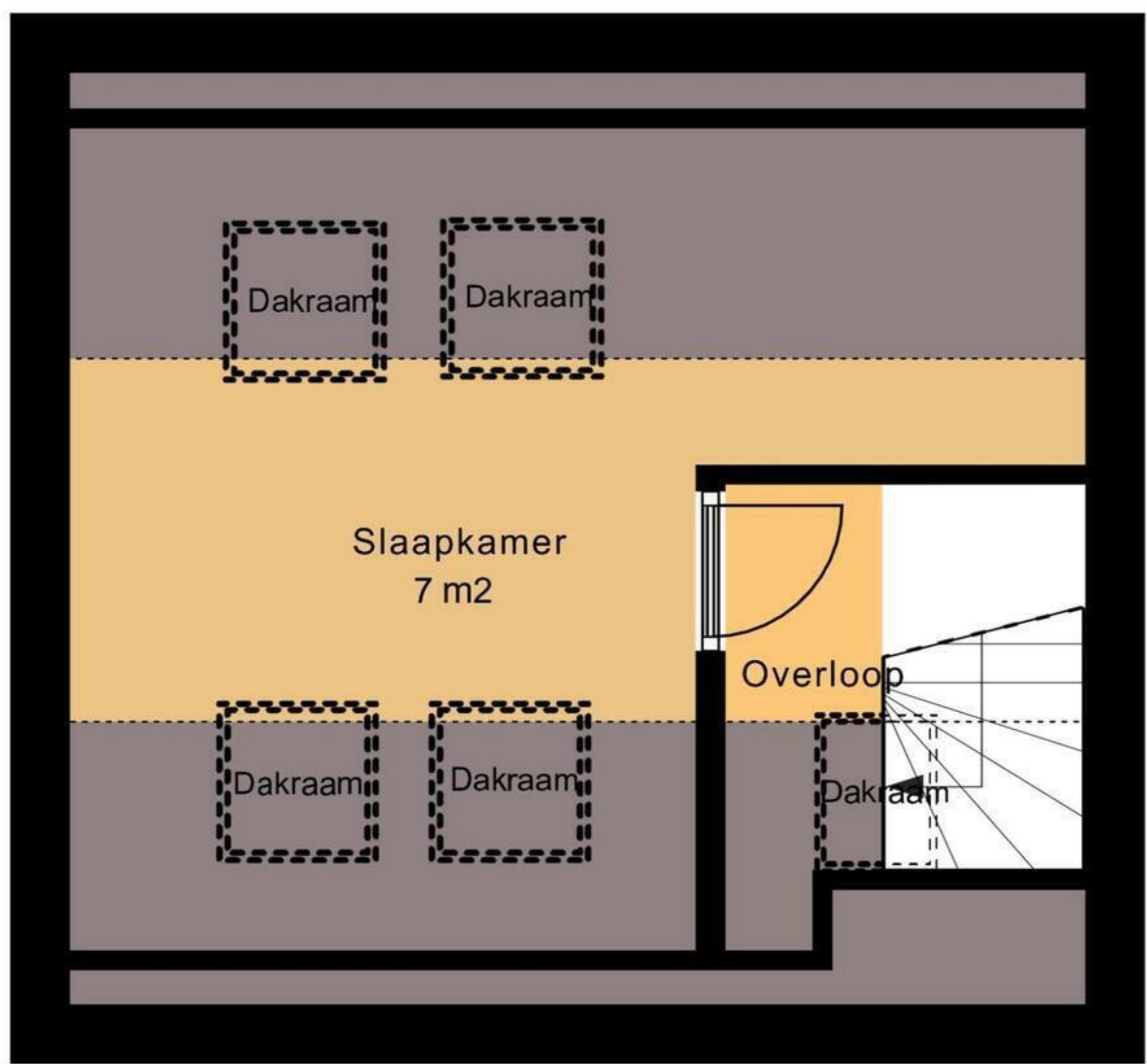
← 1.87 m → ← 1.01 m → ← 0.82 m →

← 3.06 m →

Eerste Verdieping

5.10 m

1.82 m
4.13 m



1.69 m
1.94 m

3.14 m 1.81 m

Tweede Verdieping