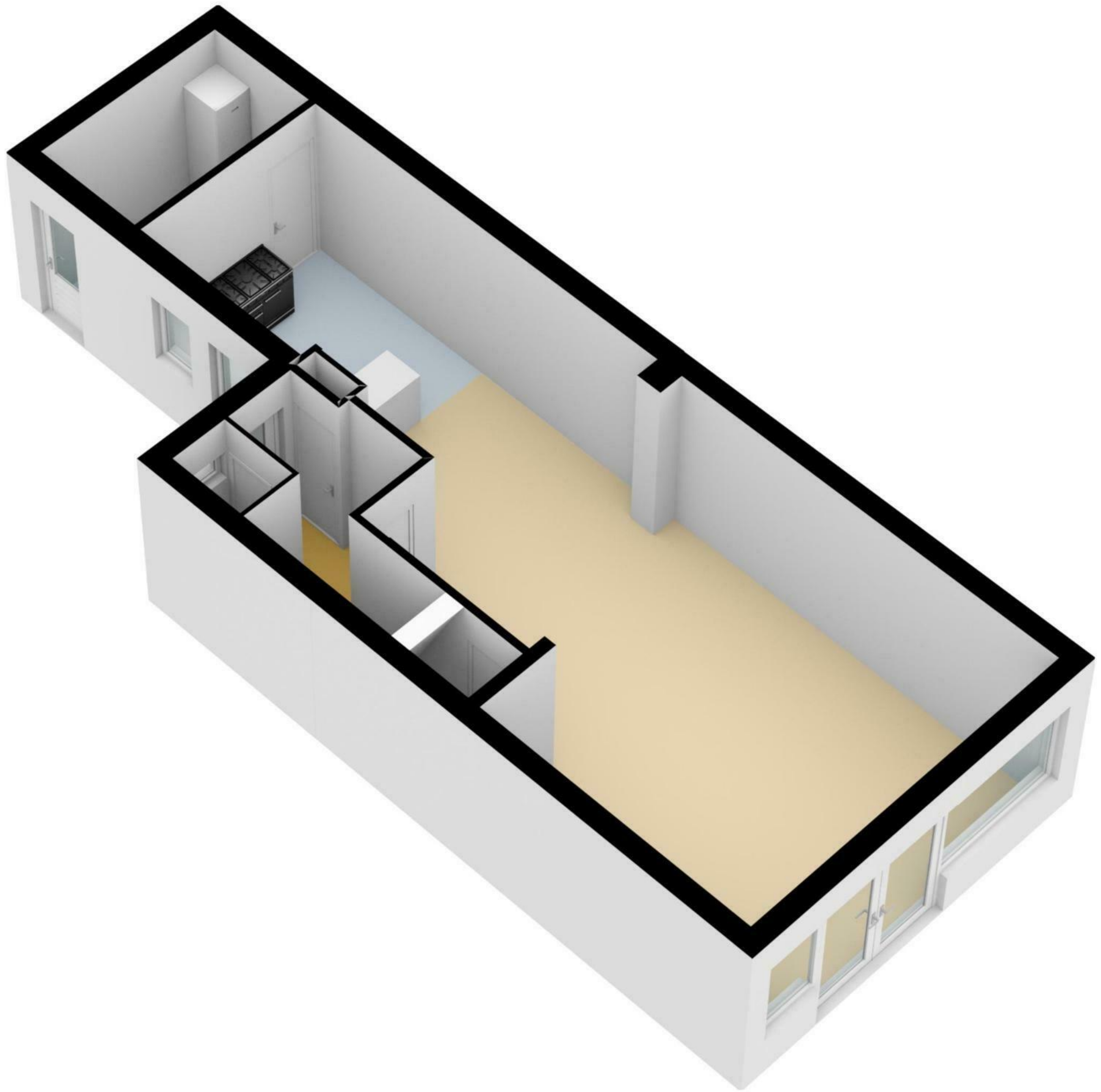


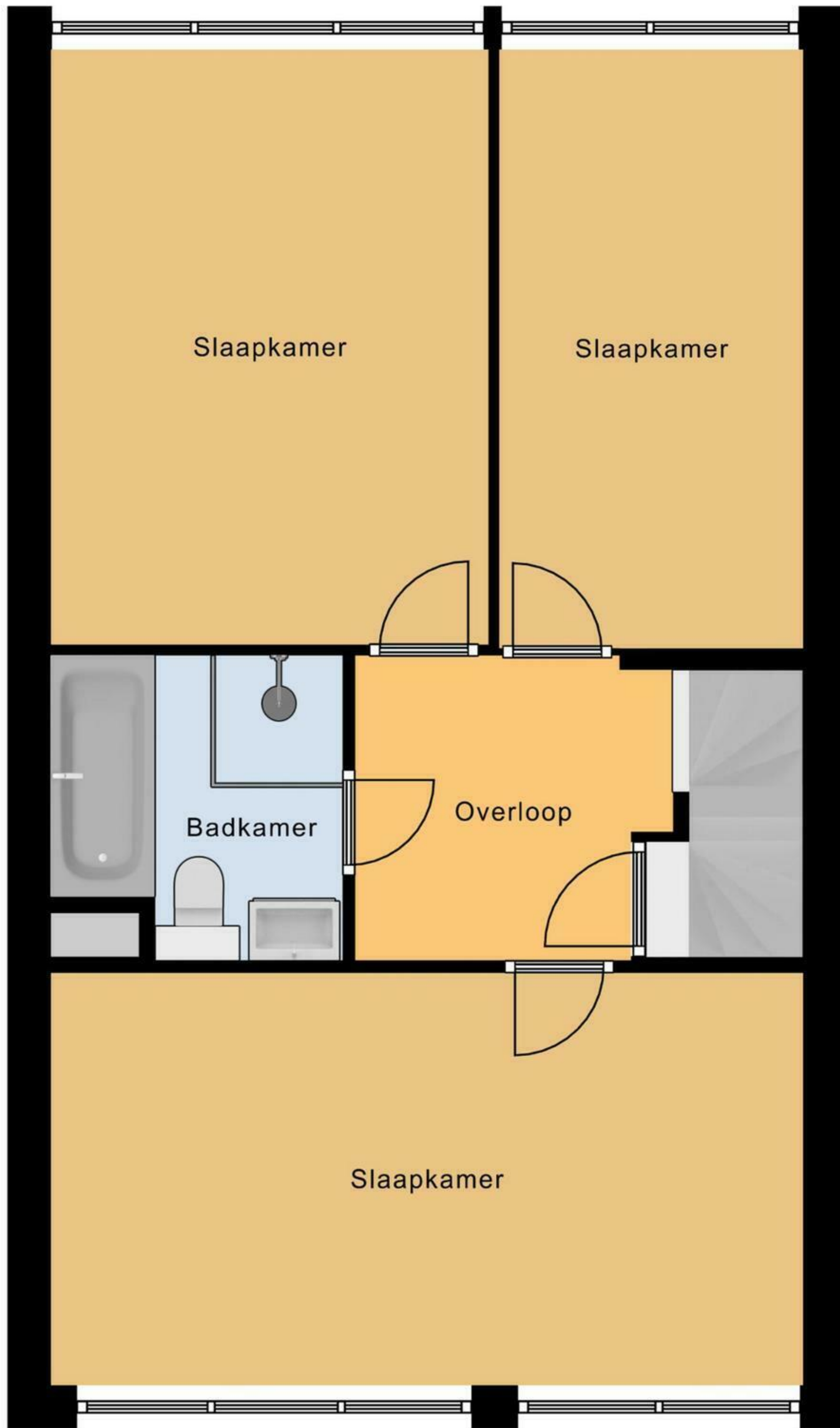
Begane Grond



3.07 m 2.13 m

4.18 m

4.20 m



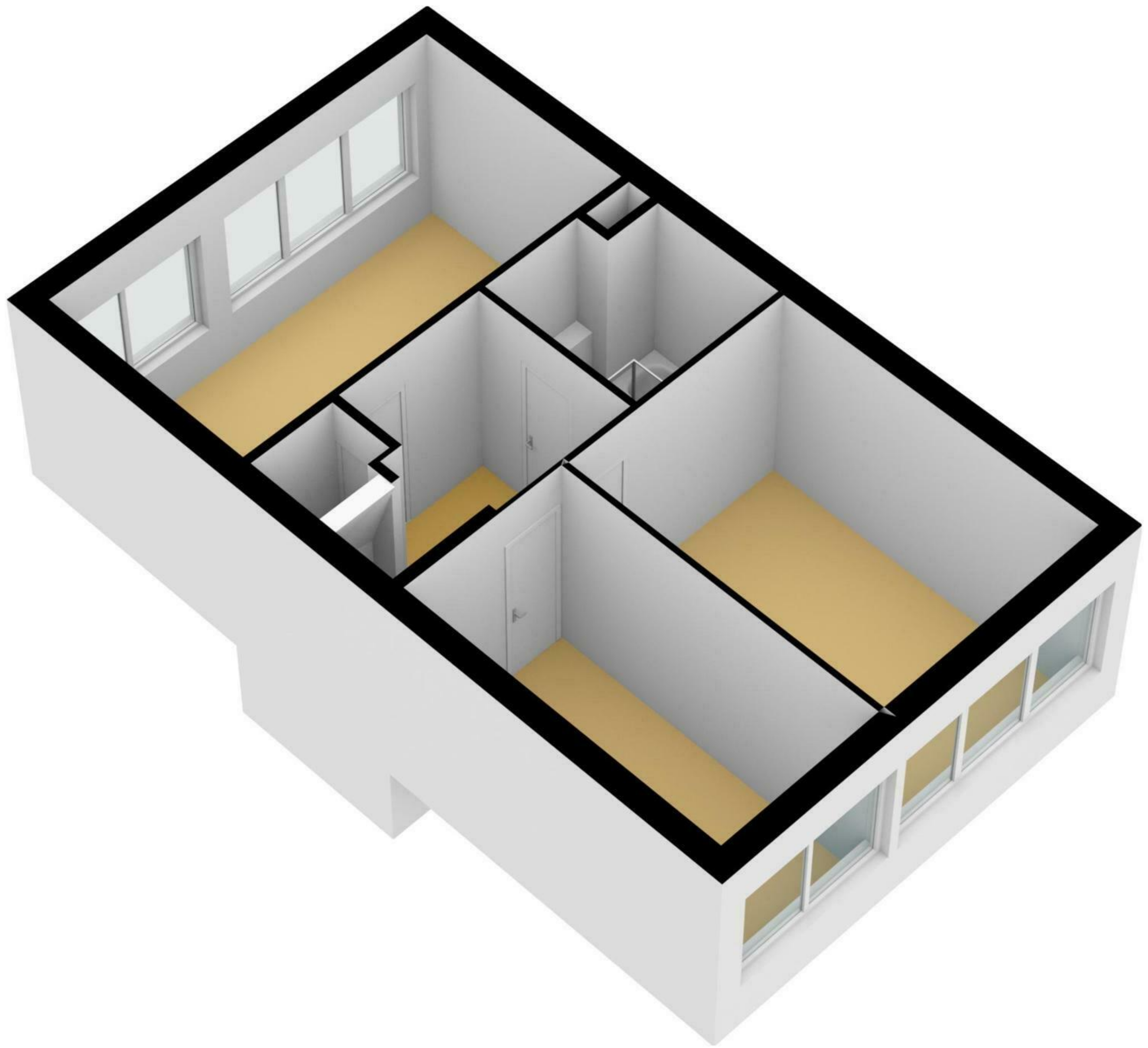
2.14 m

2.89 m

5.28 m

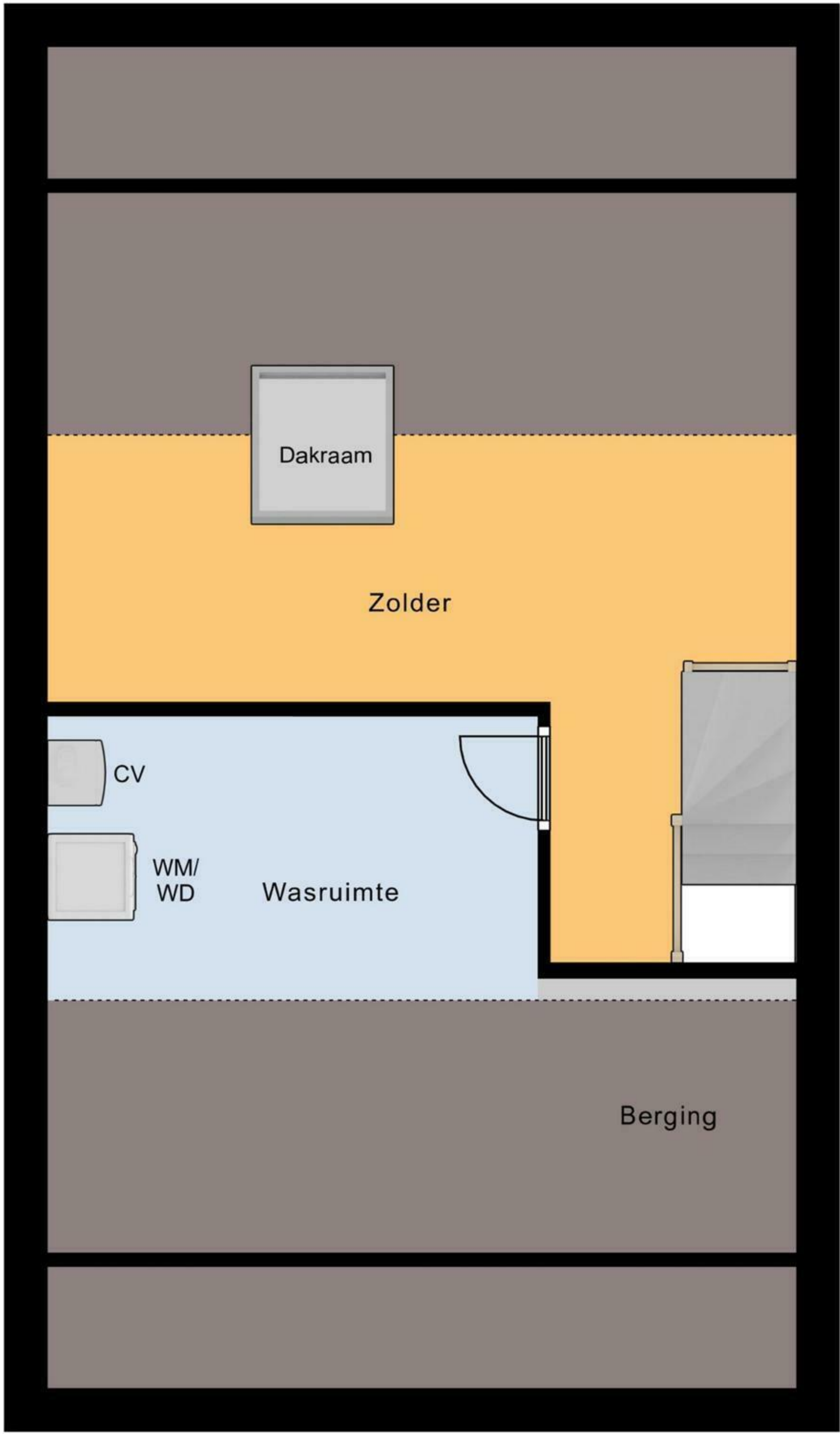
1e Verdieping





5.24 m

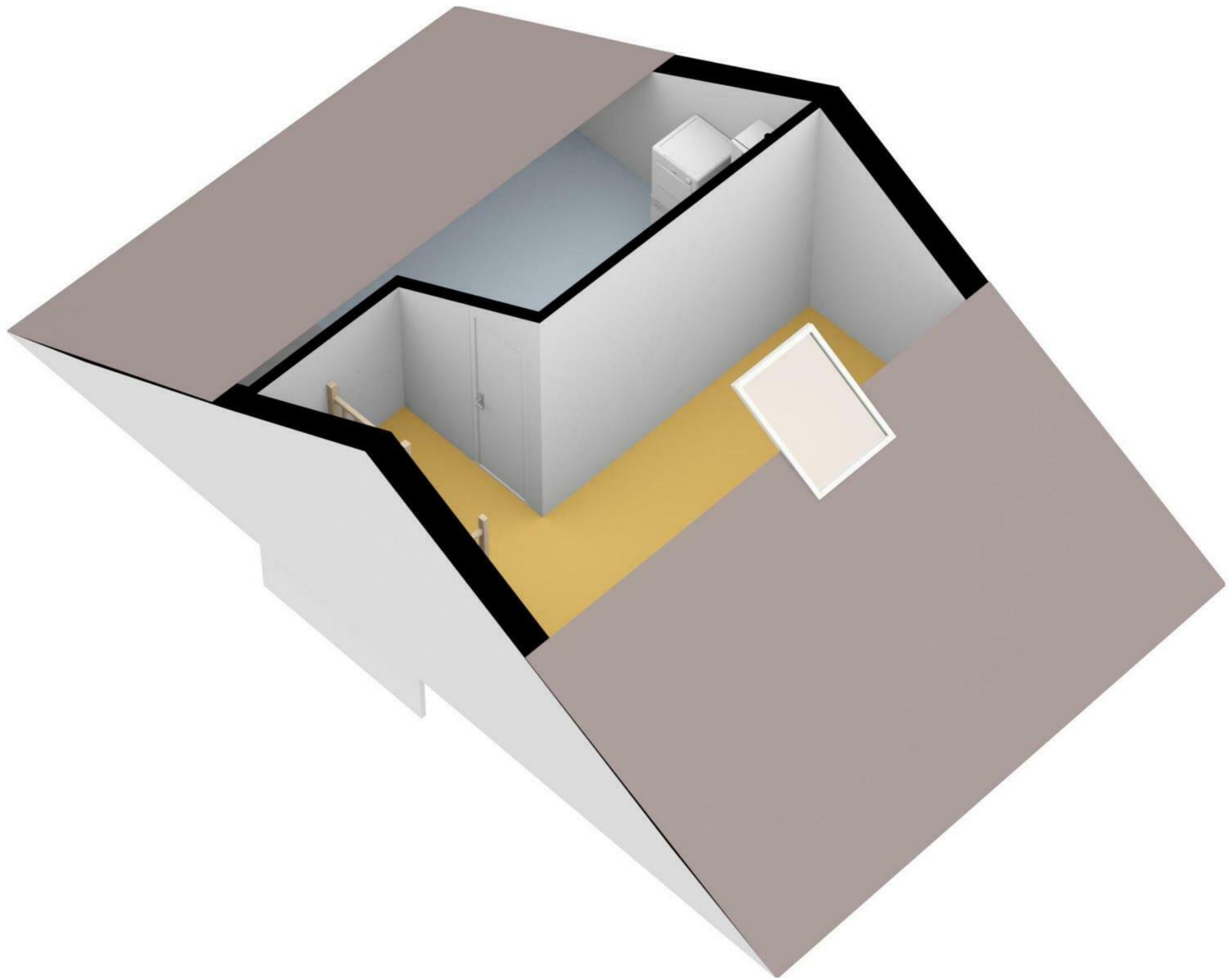
3.95 m



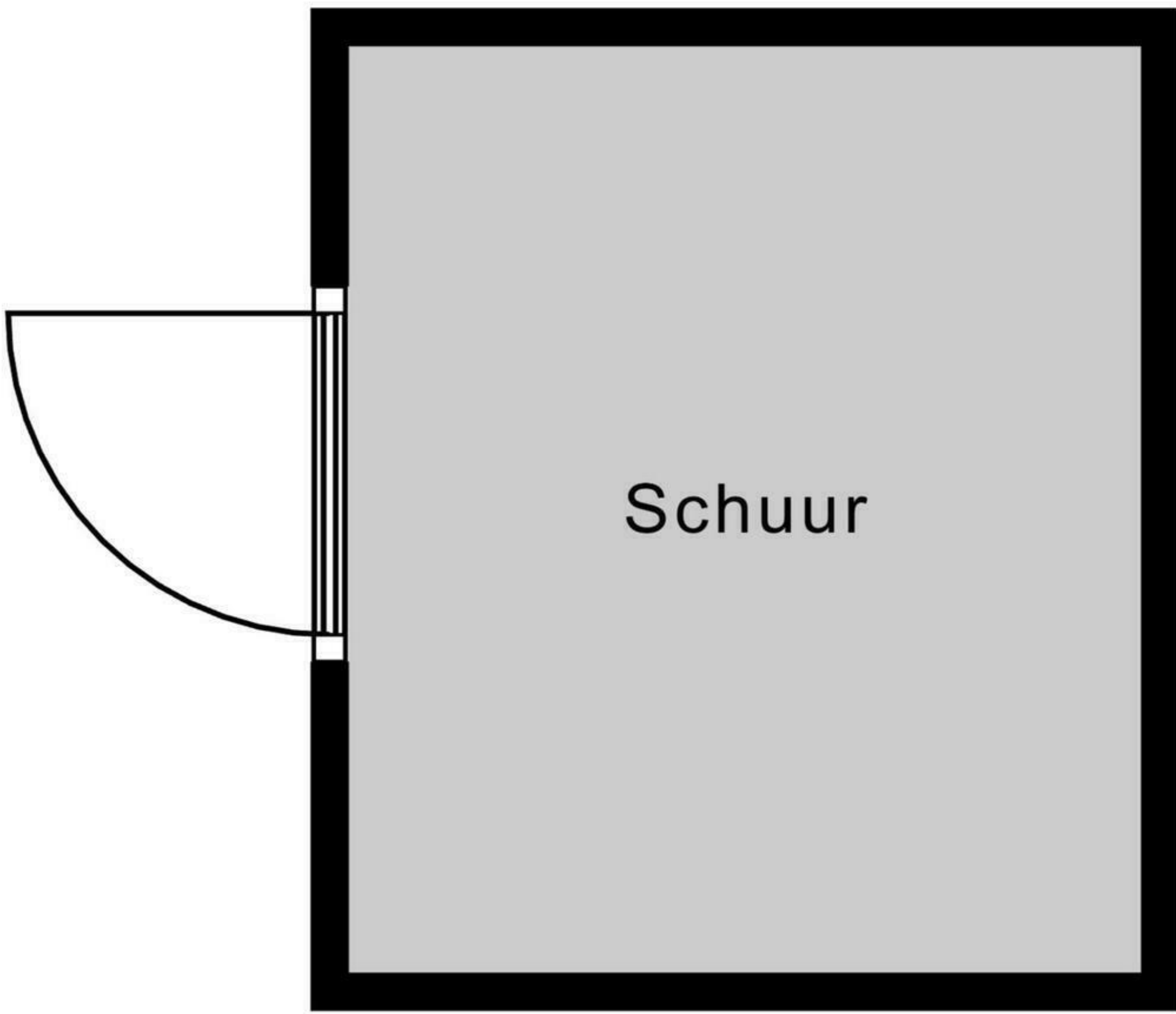
3.43 m

2e Verdieping



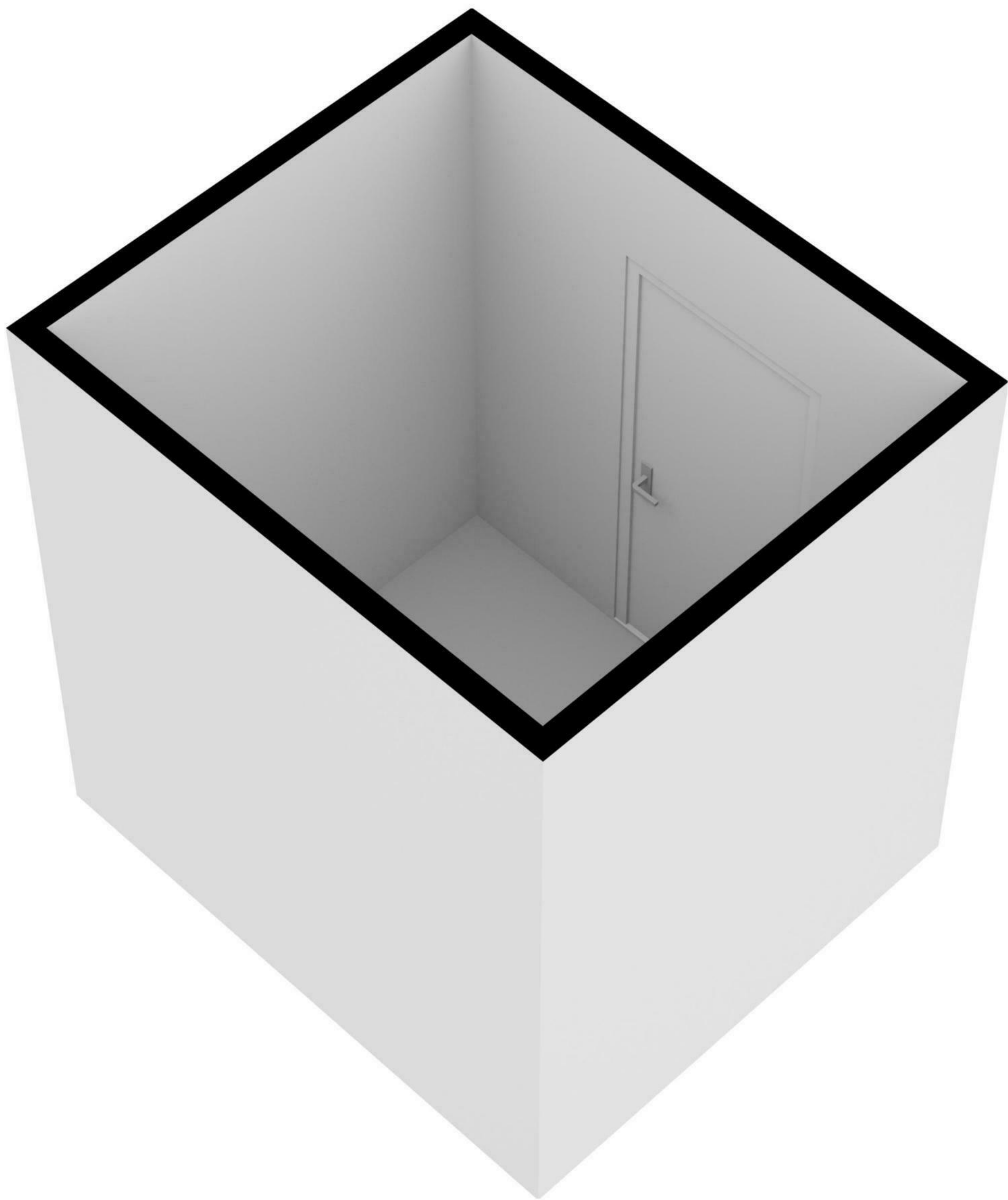


← 2.07 m →



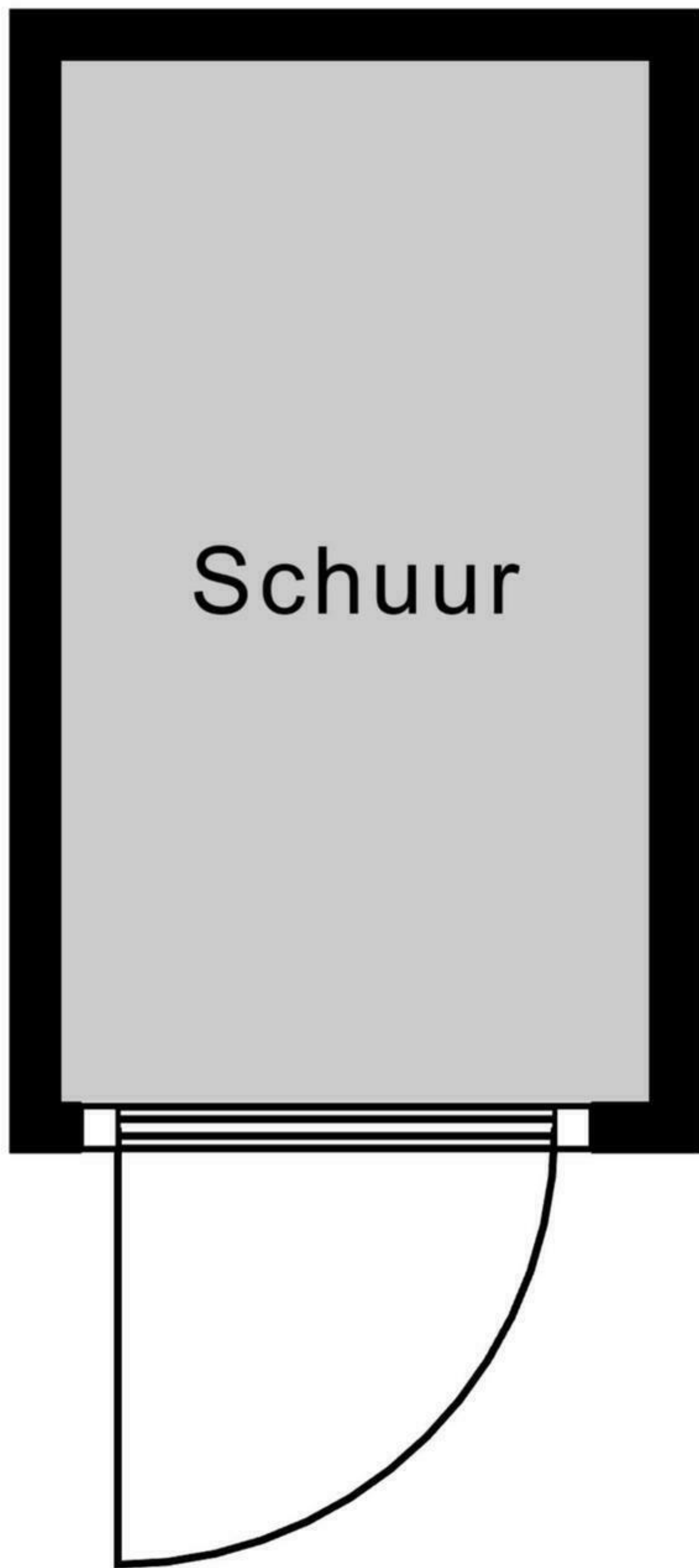
↑  
2.42 m  
↓

Schuur 1





← 1.13 m →



↑  
2.00 m  
↓

Schuur 2

