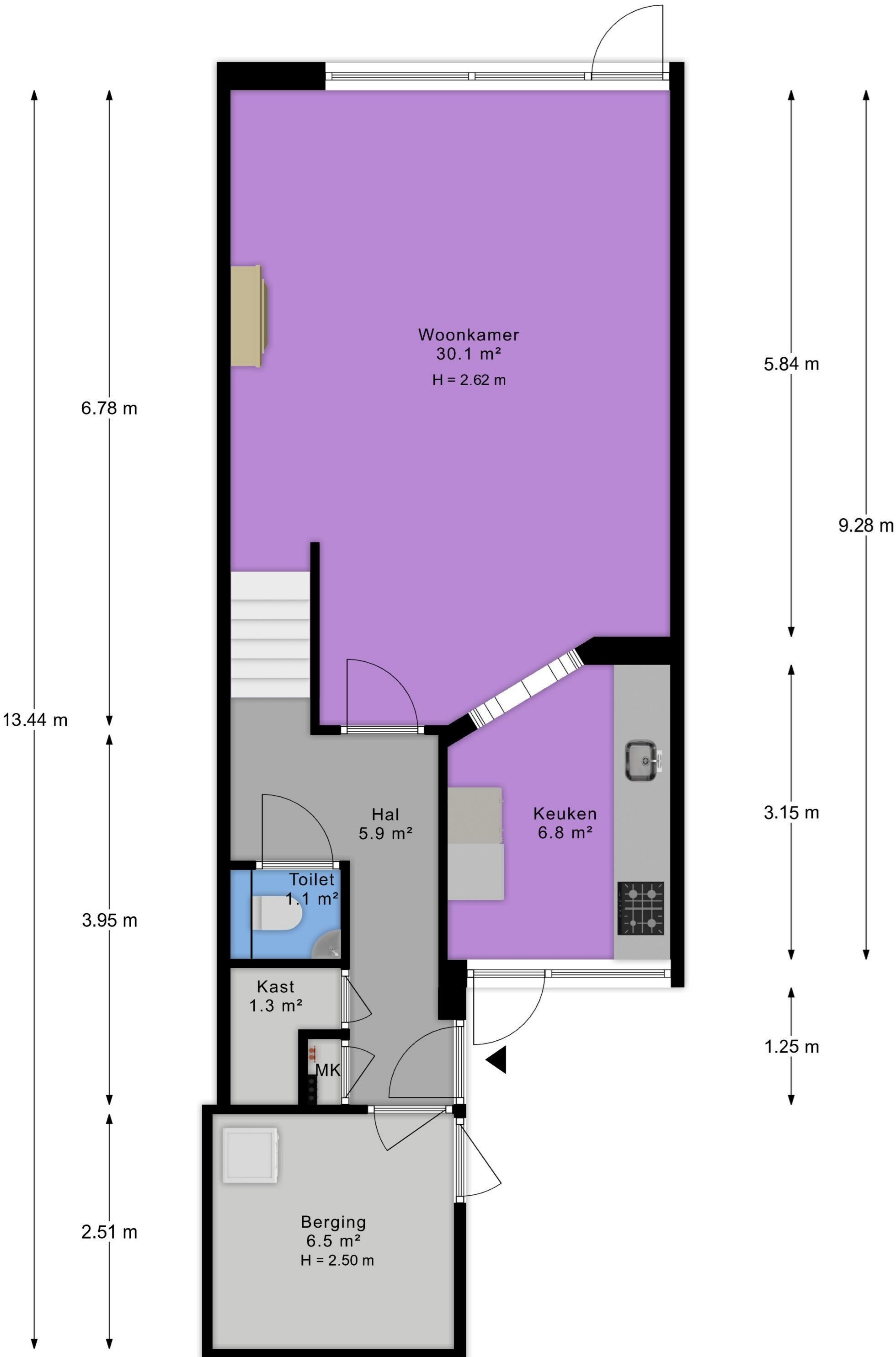


← 4.70 m →

← 2.22 m → ← 2.38 m →



6.78 m

13.44 m

3.95 m

2.51 m

5.84 m

9.28 m

3.15 m

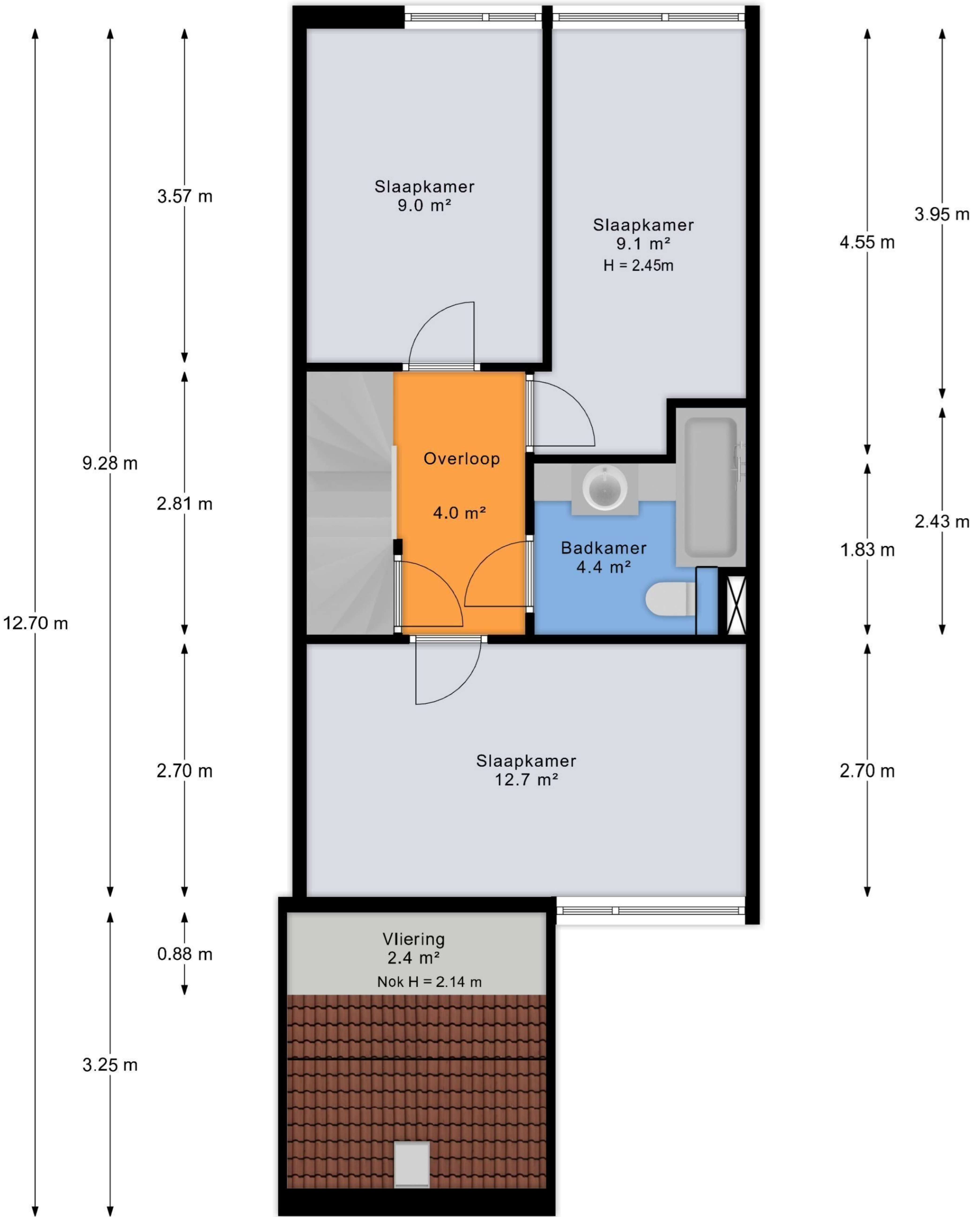
1.25 m

← 1.17 m → ← 1.11 m →

← 2.58 m →

2.52 m 2.07 m

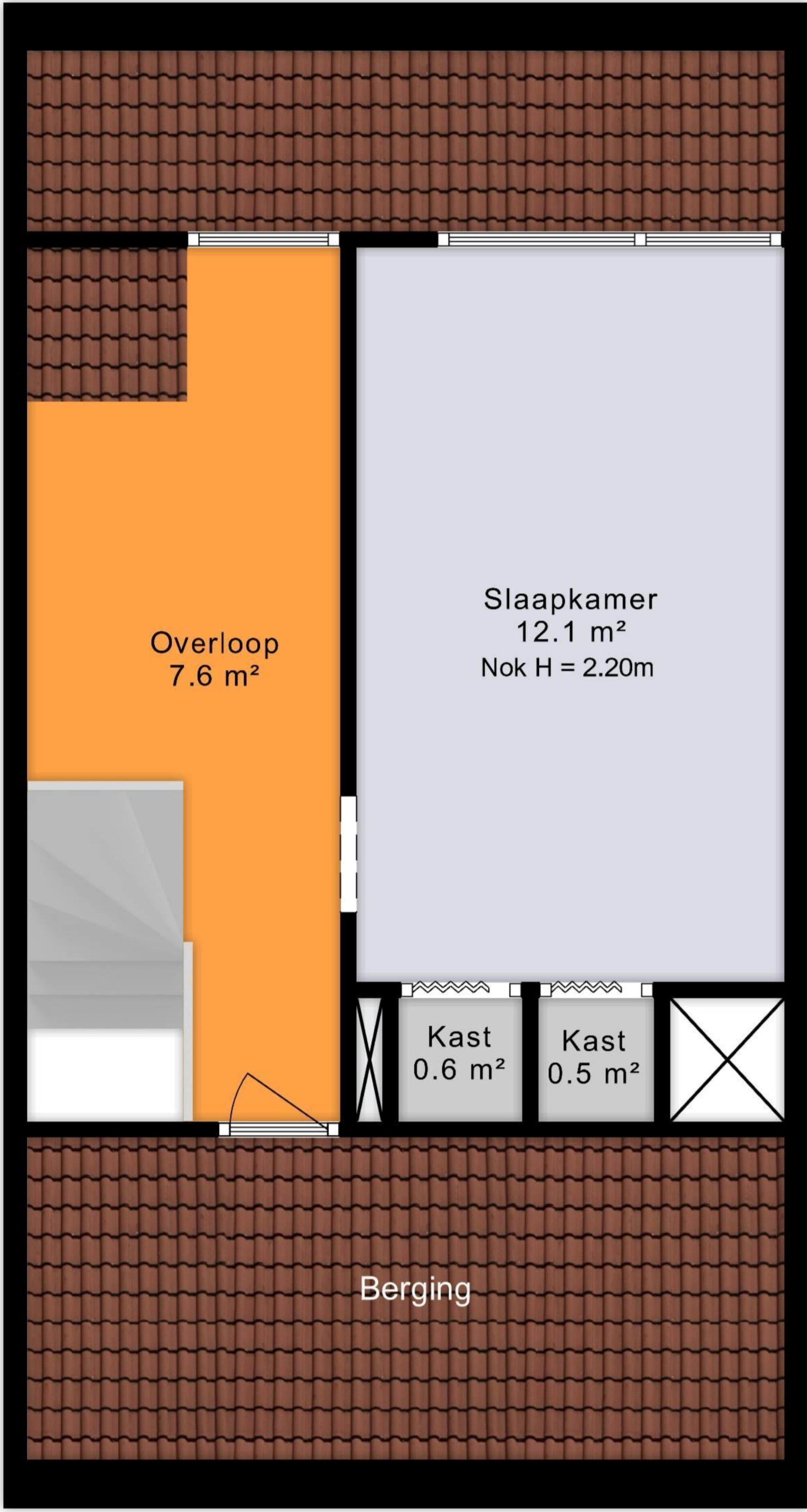
2.34 m 2.26 m



4.70 m

2.56 m

4.70 m



5.43 m

2.00 m

4.50 m

8.75 m

1.95 m

2.65 m

Overloop
7.6 m²

Slaapkamer
12.1 m²
Nok H = 2.20m

Kast
0.6 m²

Kast
0.5 m²

Berging

