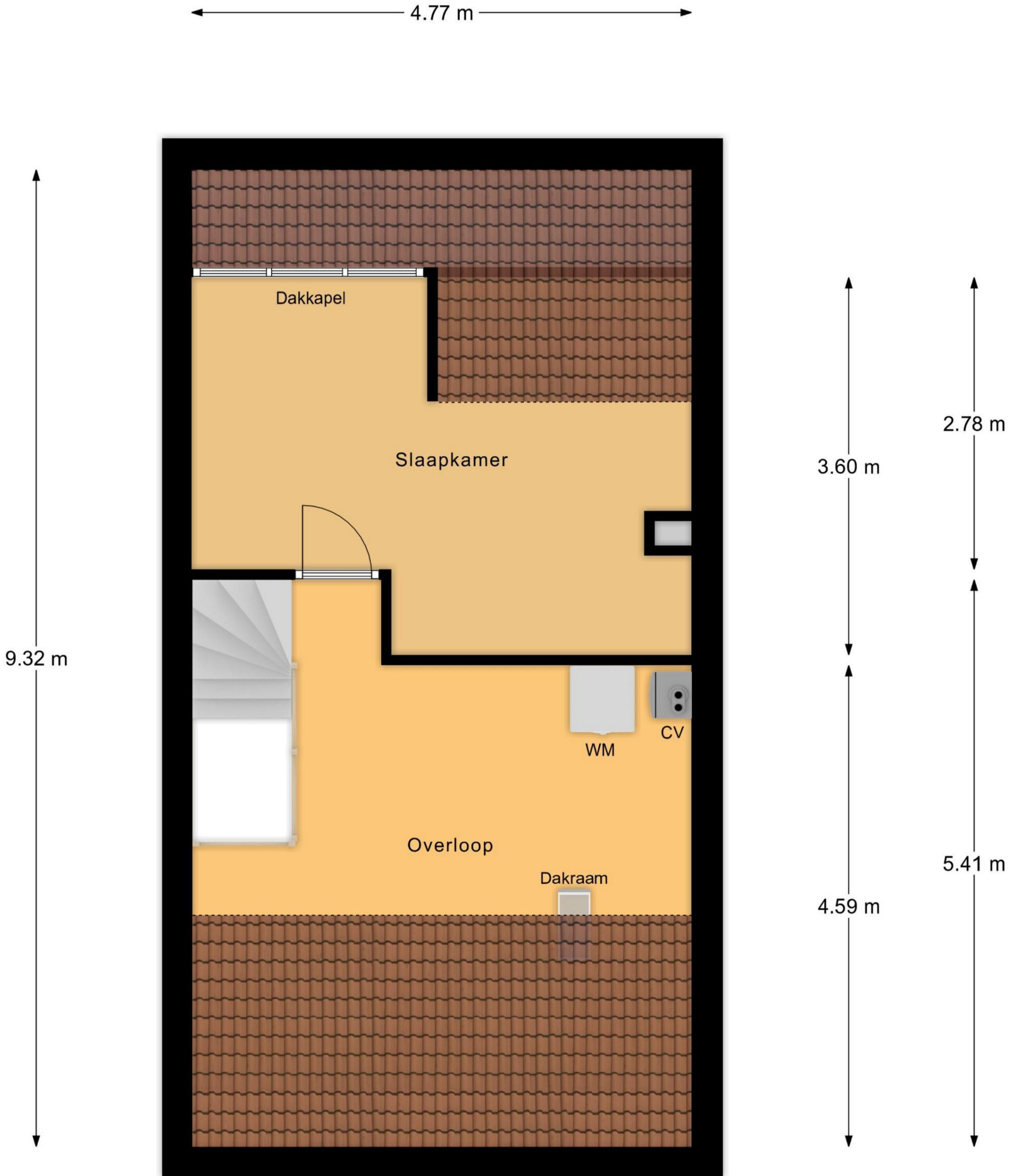


Begane Grond



1e Verdieping



2e Verdieping

← 2.37 m →



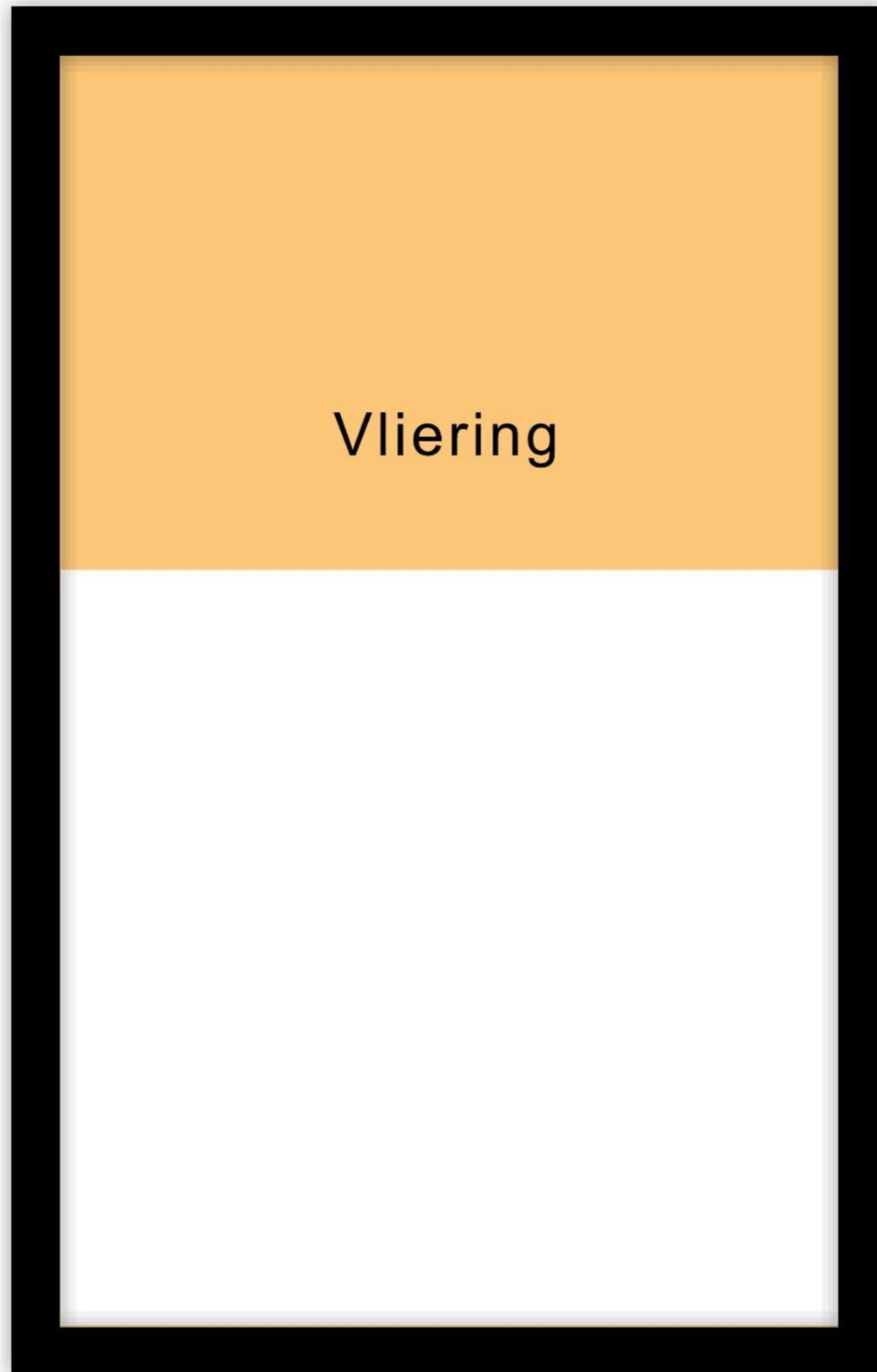
Berging

↑ 3.87 m ↓

Berging

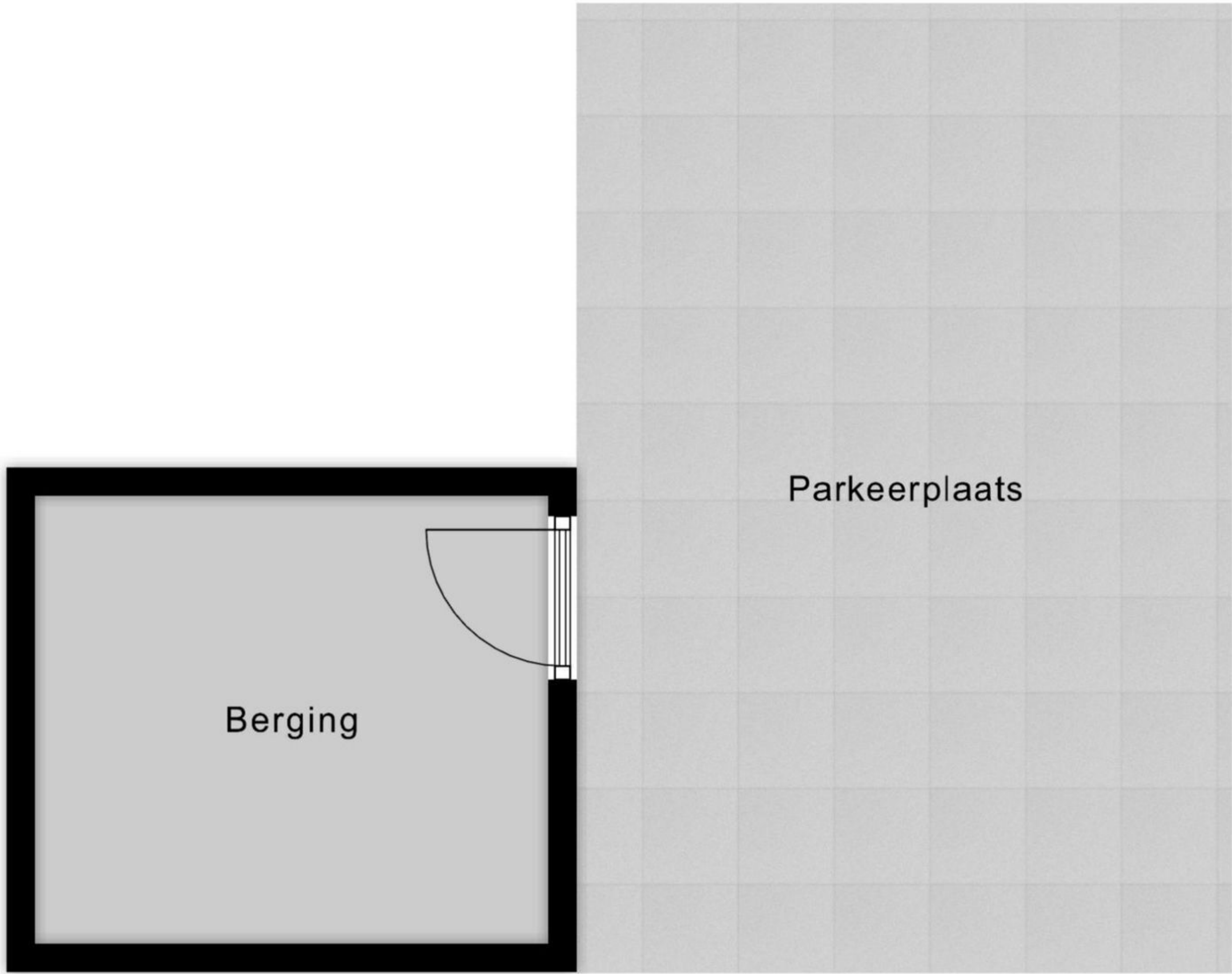
← 2.37 m →

↑
1.57 m
↓



↑
3.87 m
↓

Berging Vliering



2.33 m

Berging

Parkeerplaats

5.04 m

2.67 m

3.41 m

Parkeerplaats