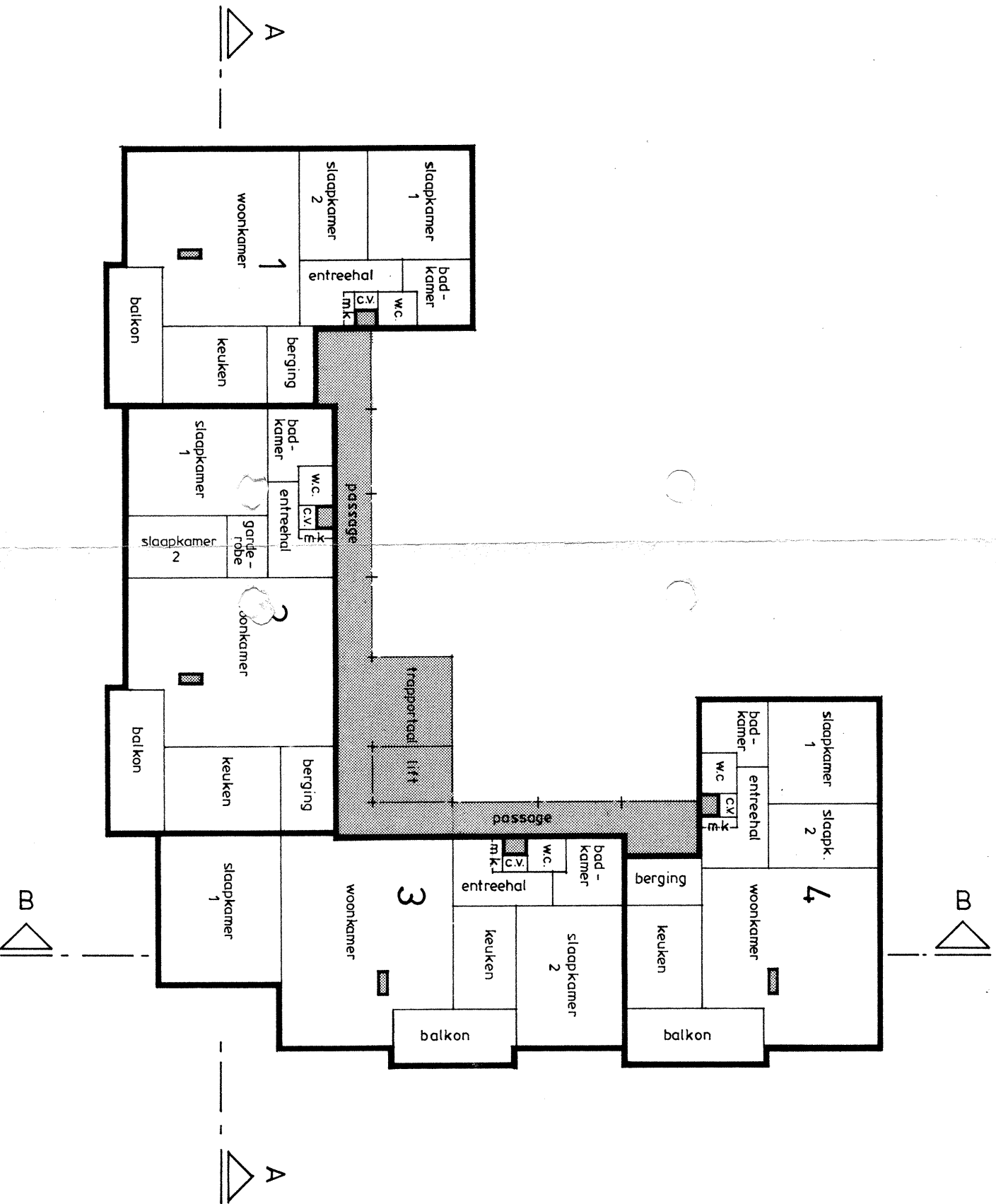
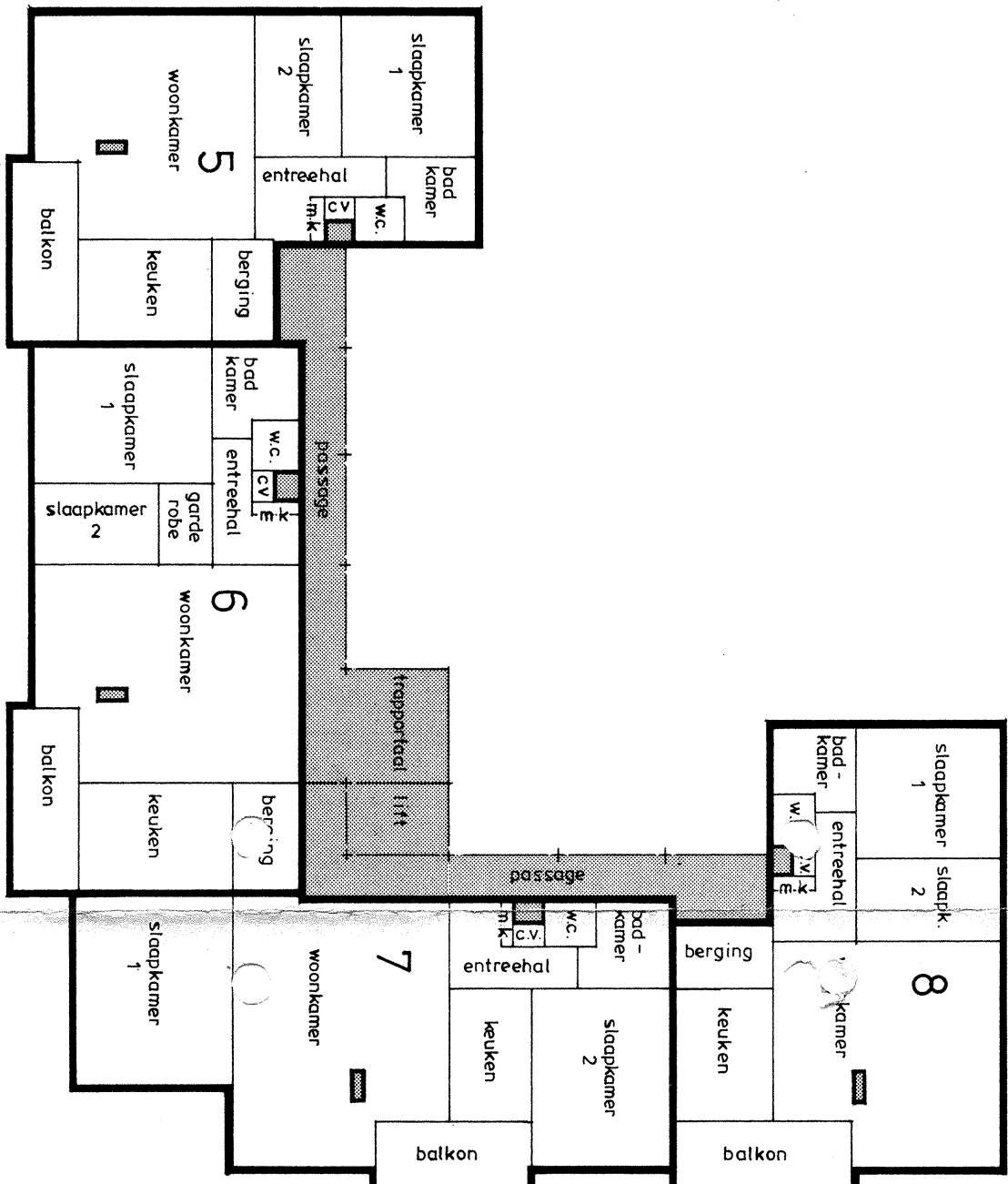


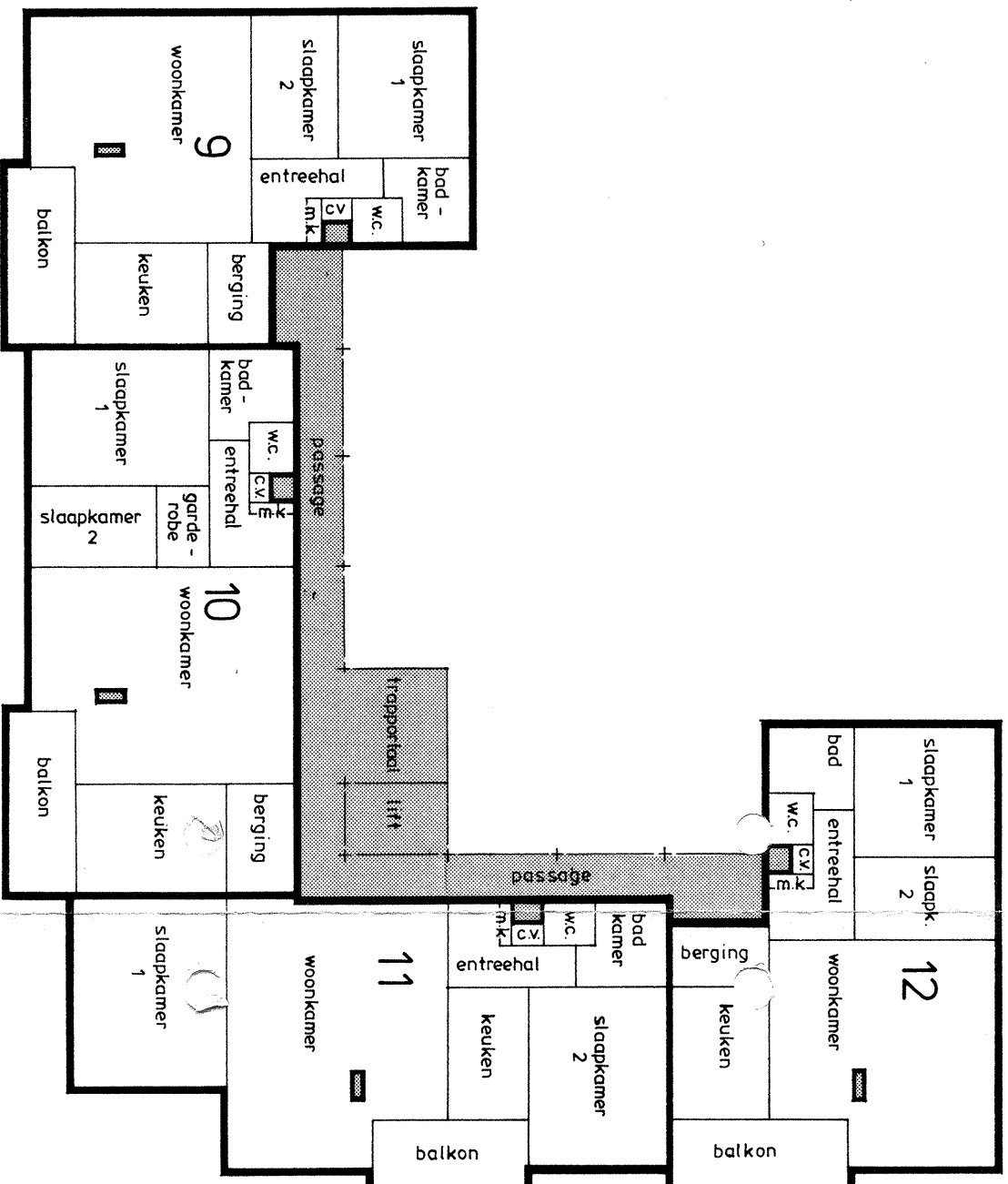
beganegrond 1 : 200



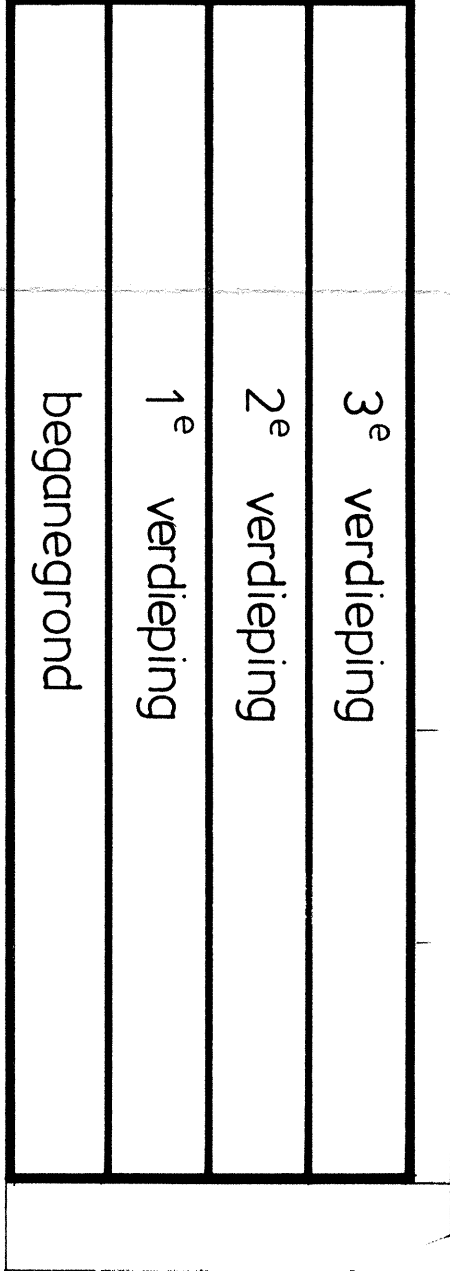
1<sup>e</sup> verdieping 1 : 200



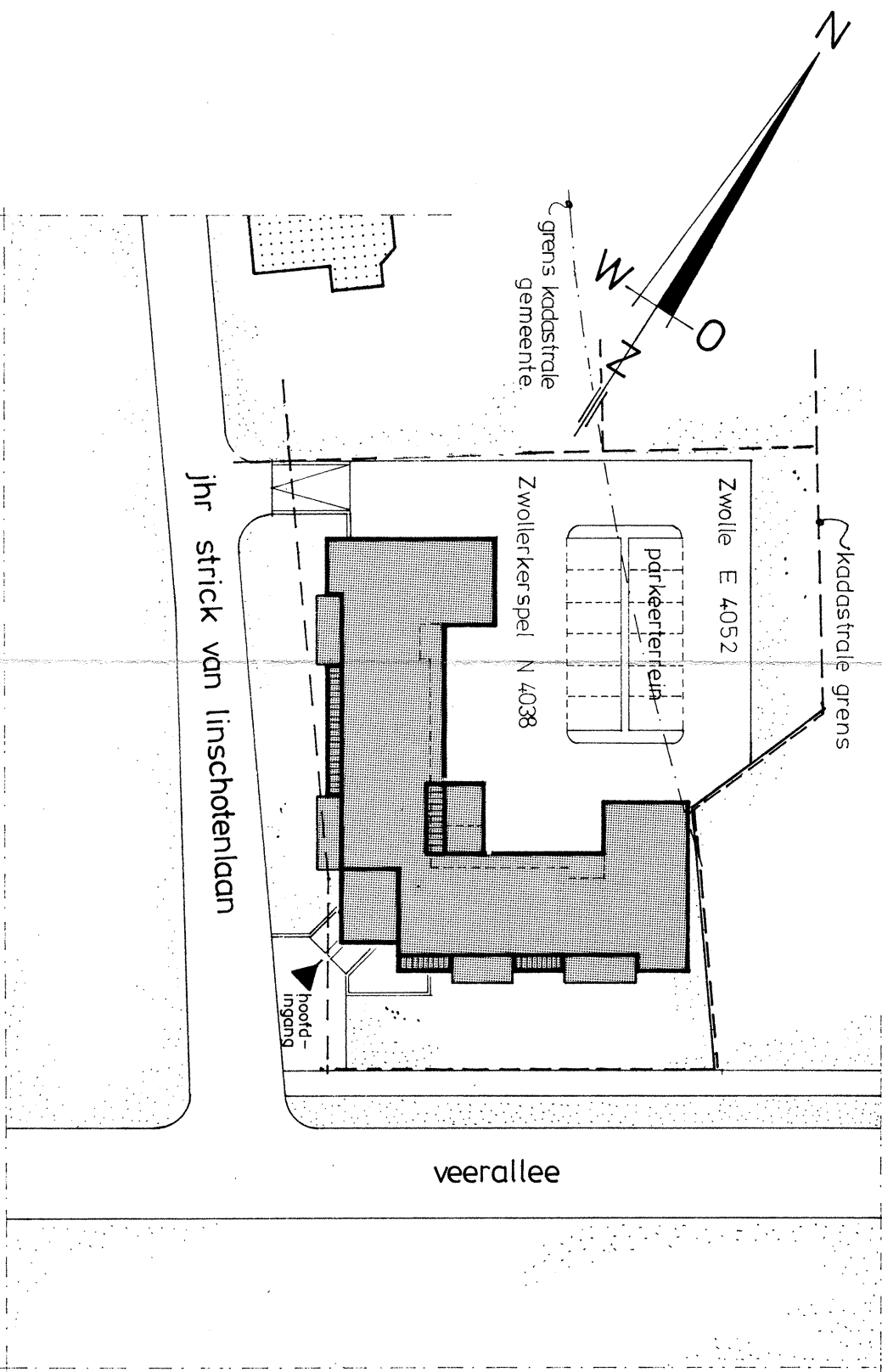
2<sup>e</sup> verdieping 1 : 200



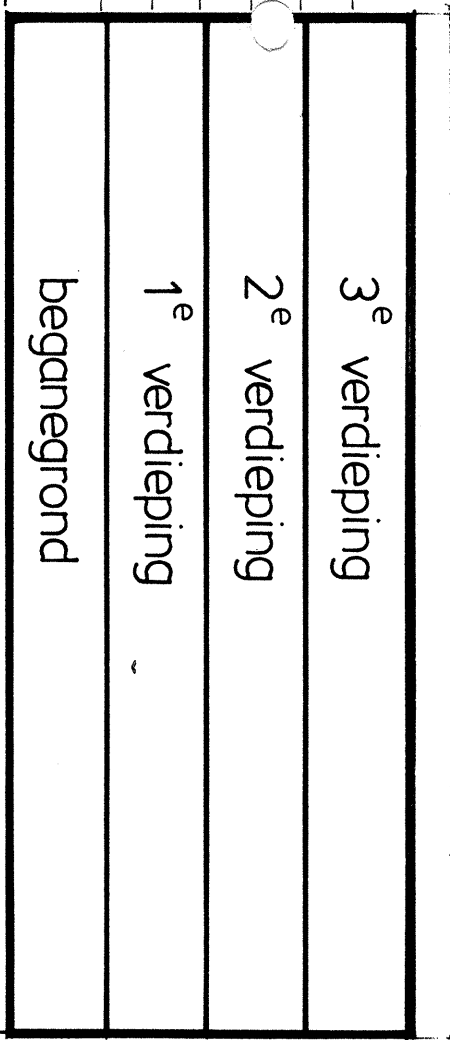
3<sup>e</sup> verdieping 1 : 200



doorsnede A-A 1 : 200



situatie 1 : 500



doorsnede B-B 1 : 200

opm: tekening bestaat uit één blad

= gemeenschappelijk

project: 12 appartementen veerallee te Zwolle

omschrijving: splitsingstekening

doorsneden, plattegronden en situatie

verfnummer: ZV-040

SP-01

VEN