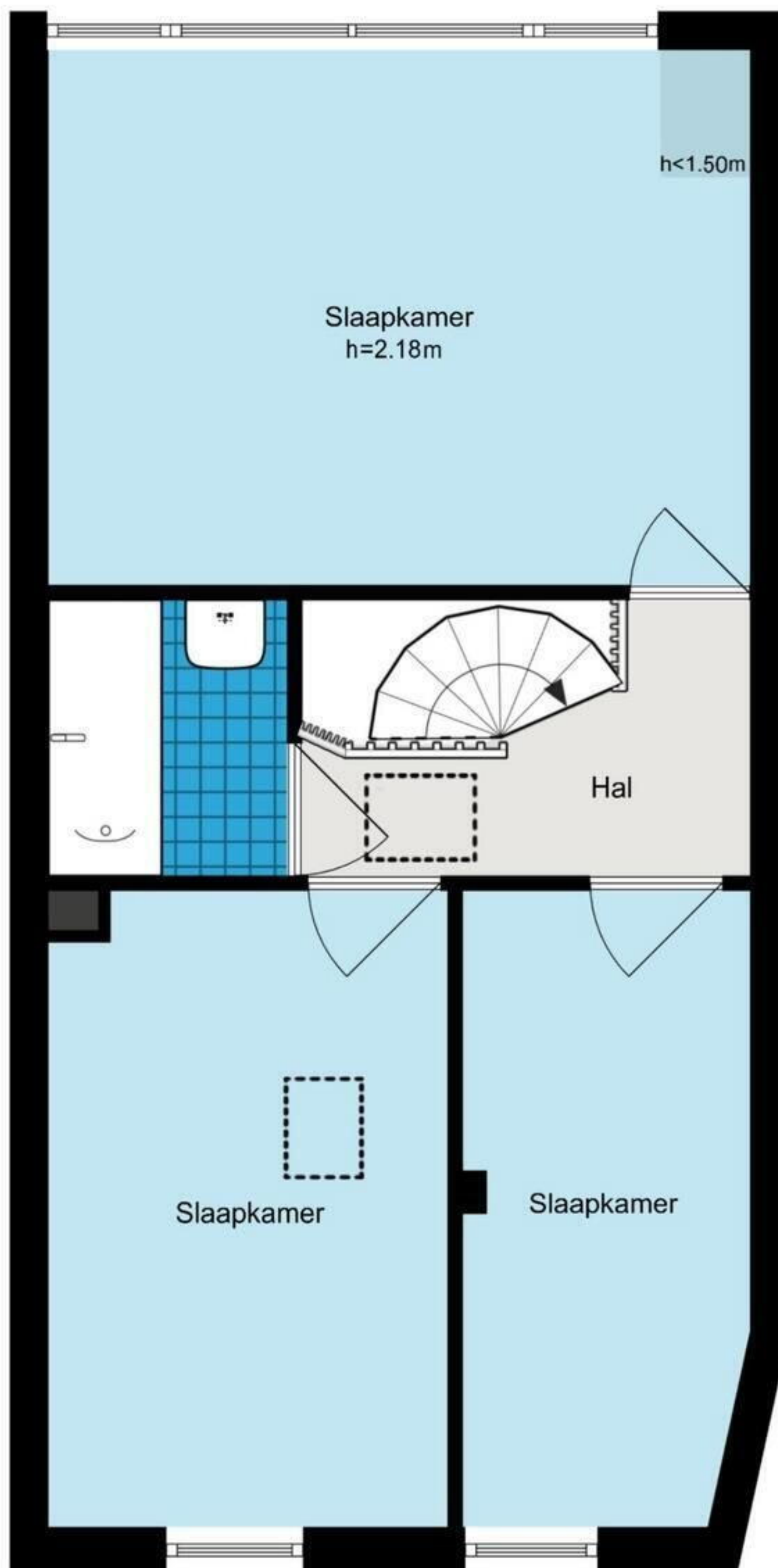






4.52 m

9.52 m  
3.45 m  
1.77 m  
4.10 m



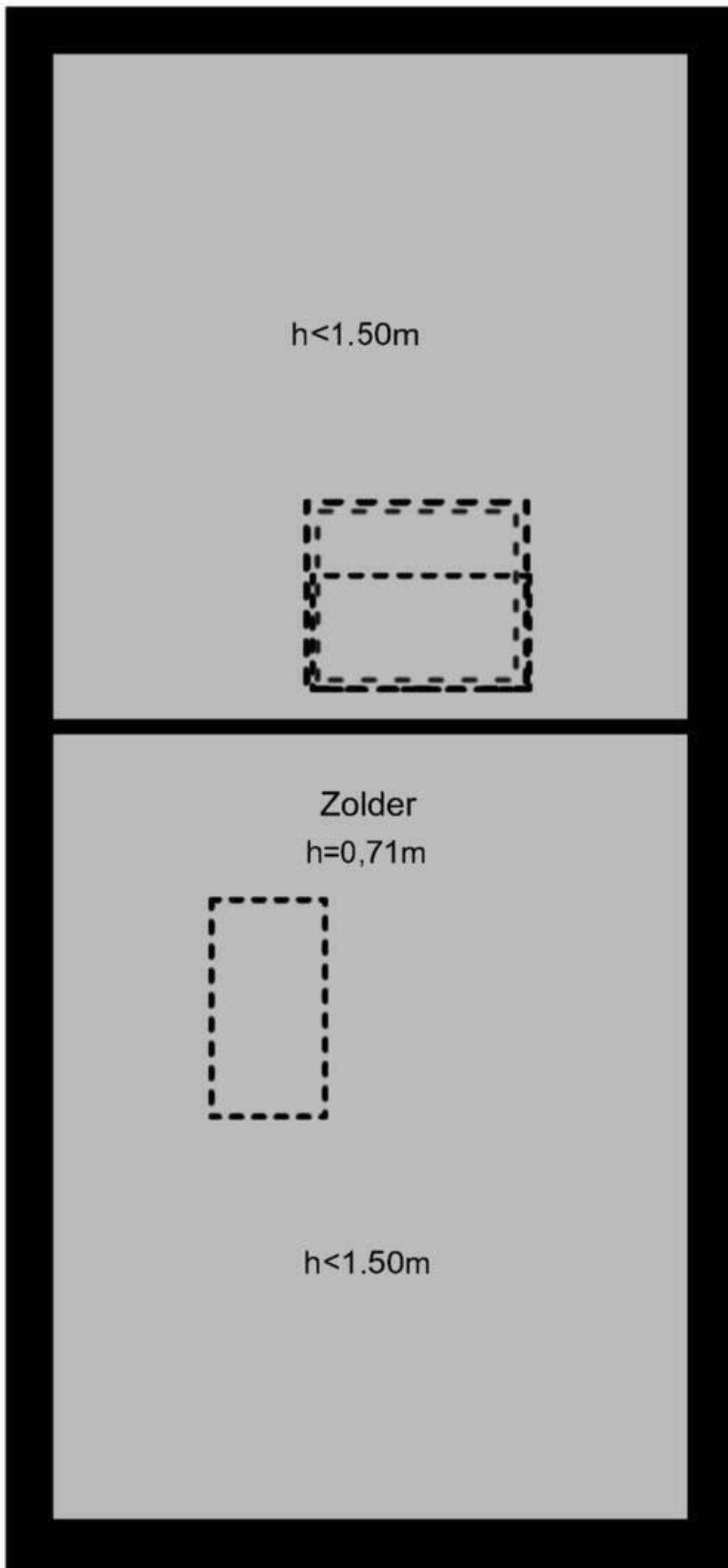
3.45 m  
1.77 m  
4.10 m  
9.52 m

1.58 m  
2.57 m  
1.85 m  
4.52 m

3.33 m



7.69 m



$h < 1.50\text{ m}$



Zolder  
 $h = 0,71\text{ m}$



$h < 1.50\text{ m}$

3.49 m

4.12 m