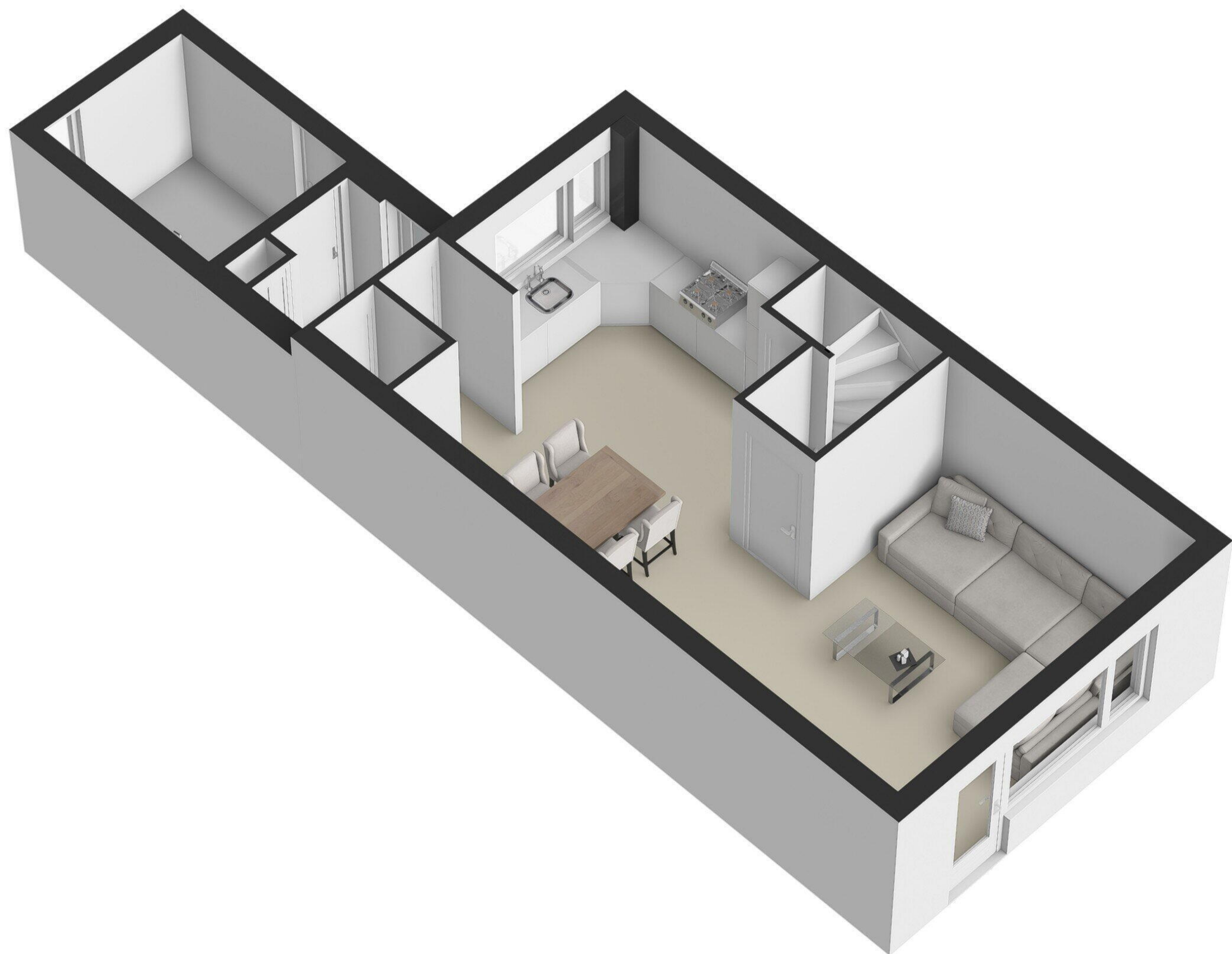




Begane Grond



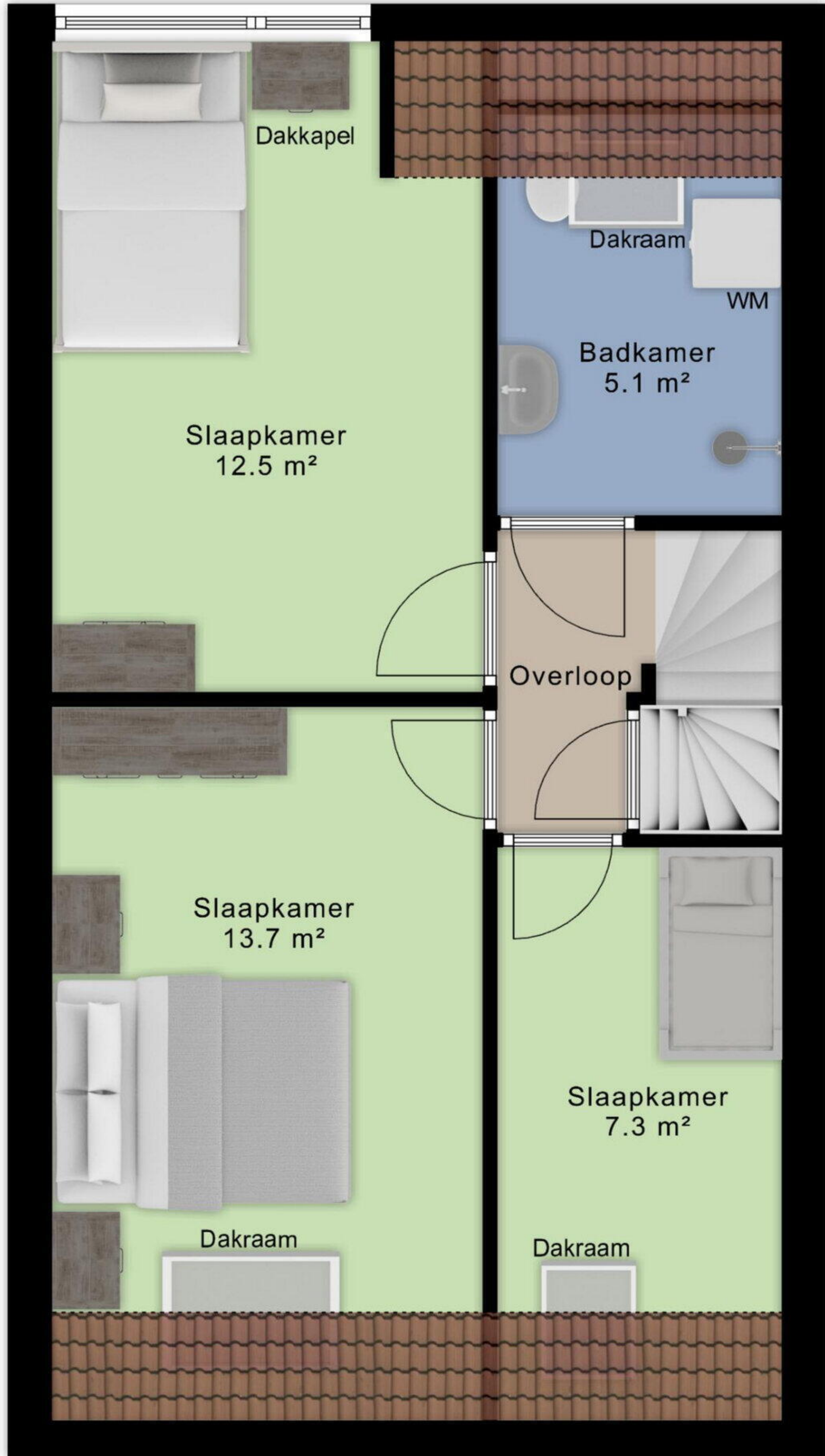




4.88 m

2.87 m 1.90 m

4.35 m  
3.39 m  
4.77 m  
4.05 m

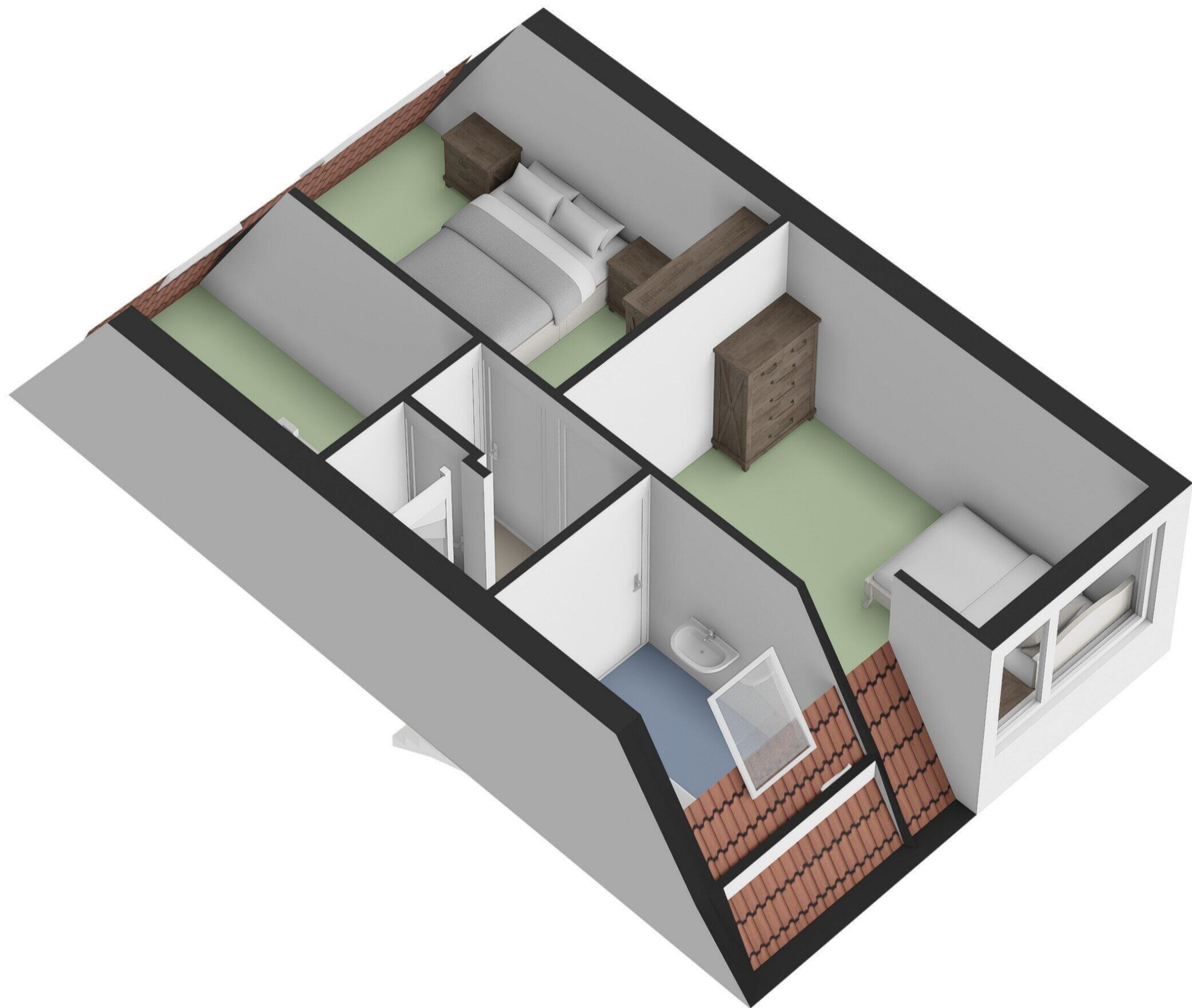


2.68 m  
2.02 m  
3.83 m

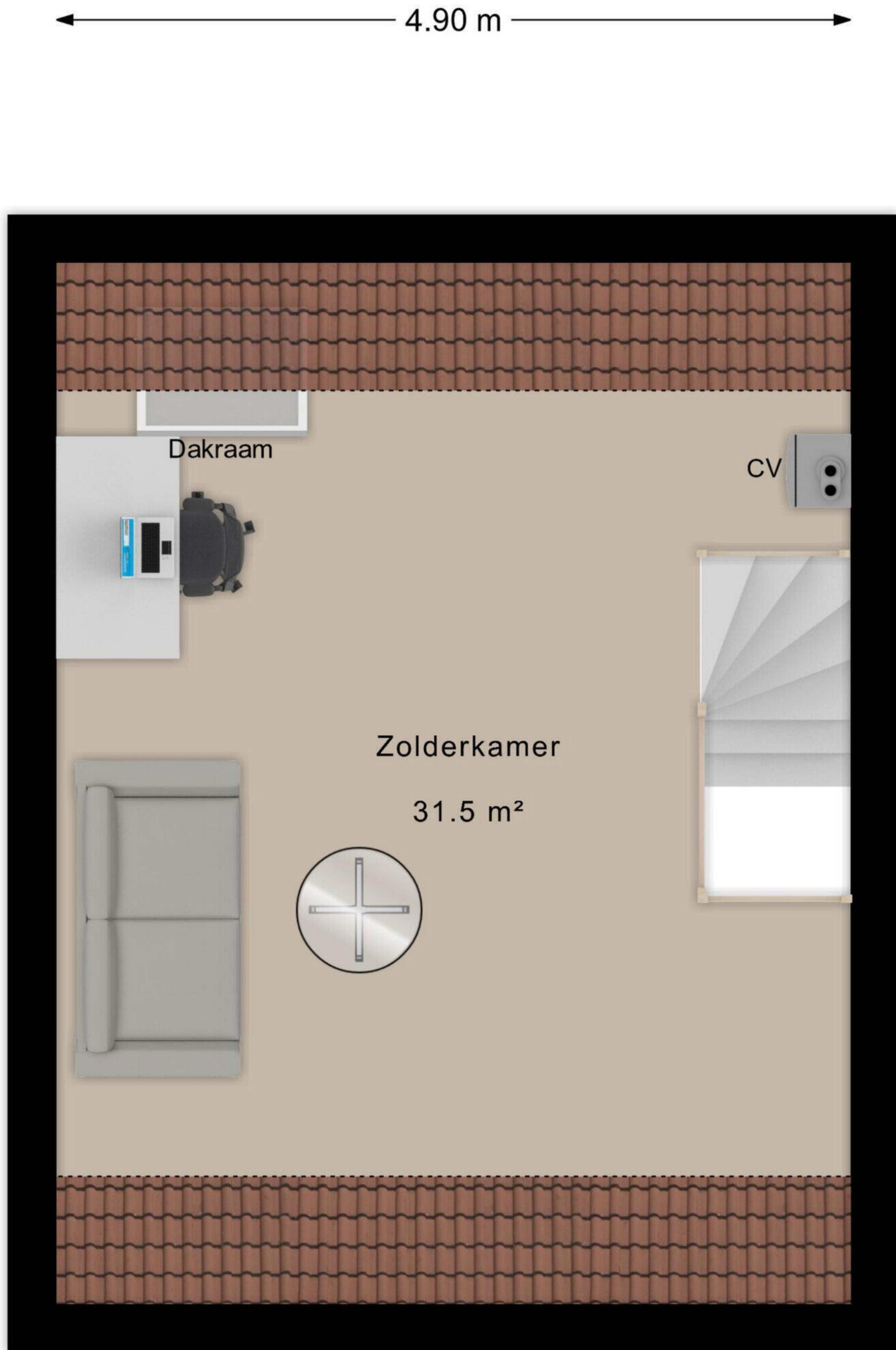
2.88 m 1.91 m

1e Verdieping



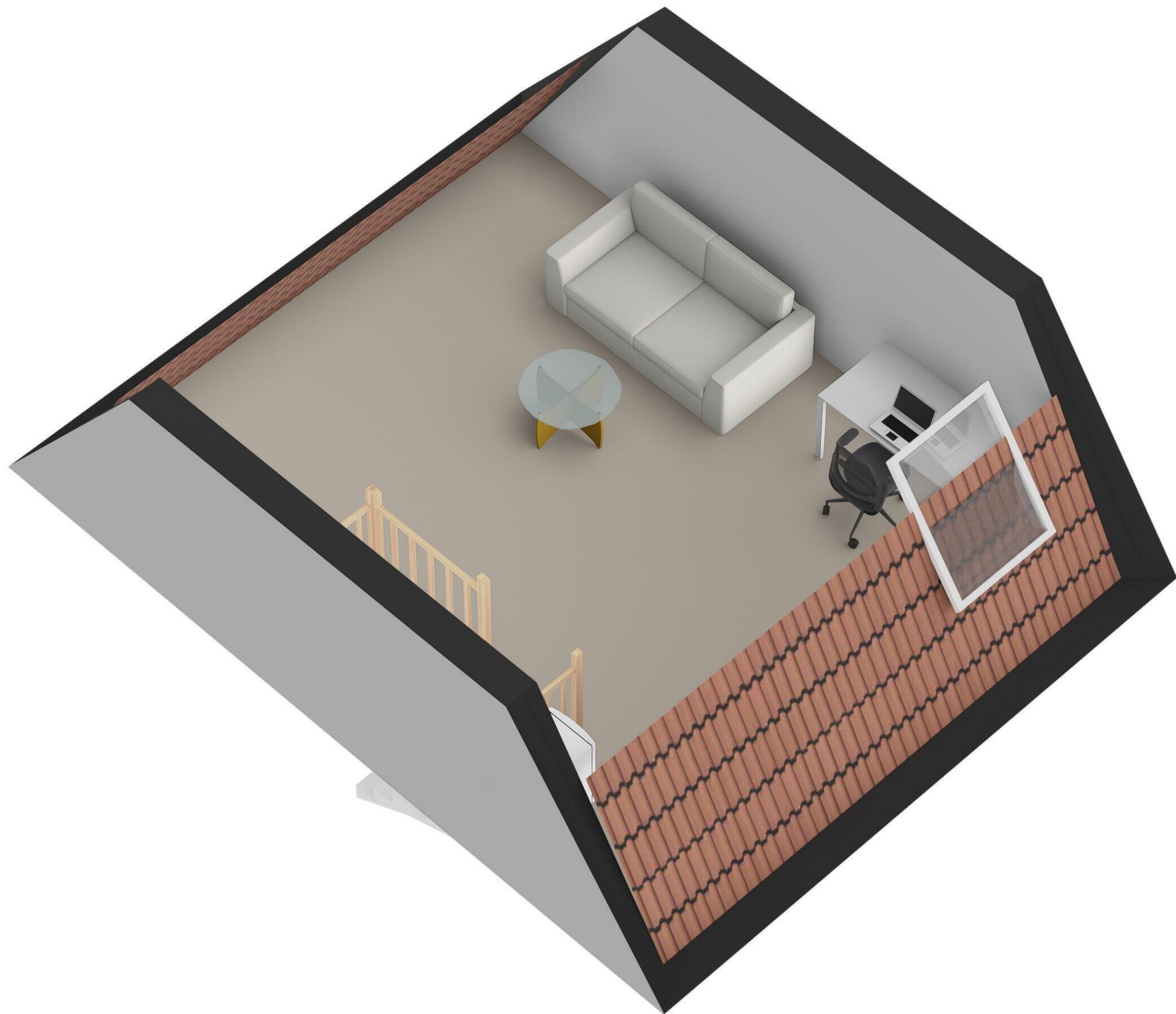




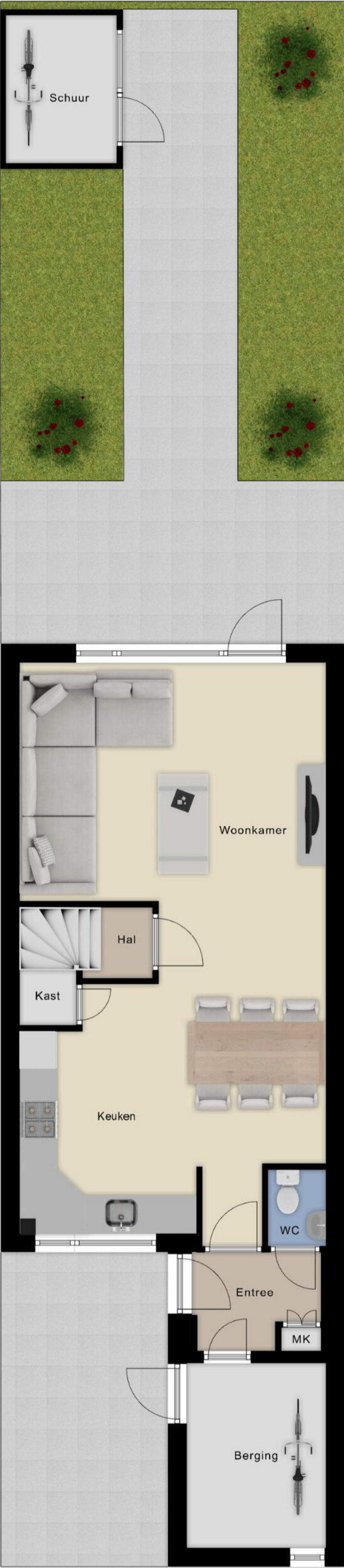


2e Verdieping



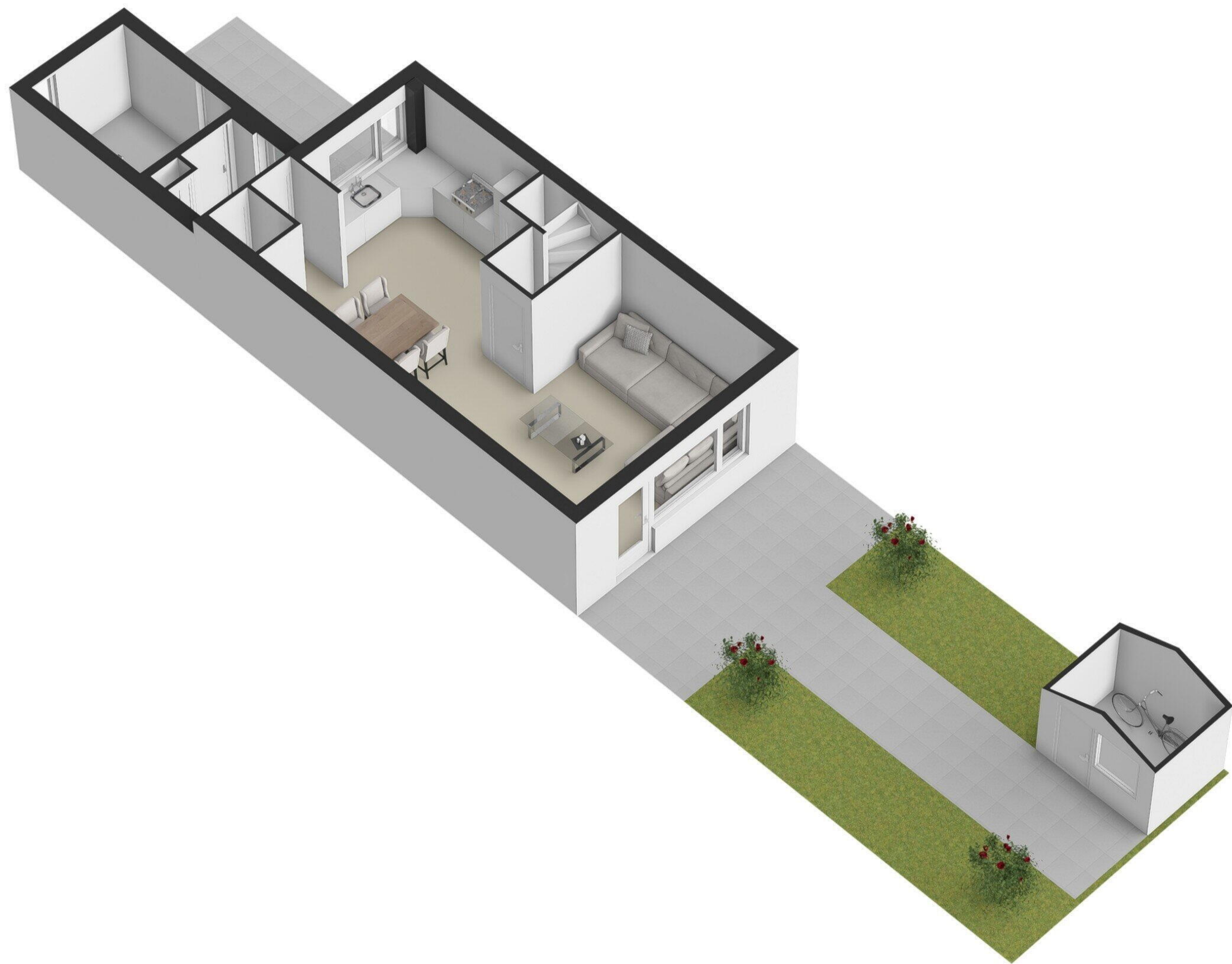






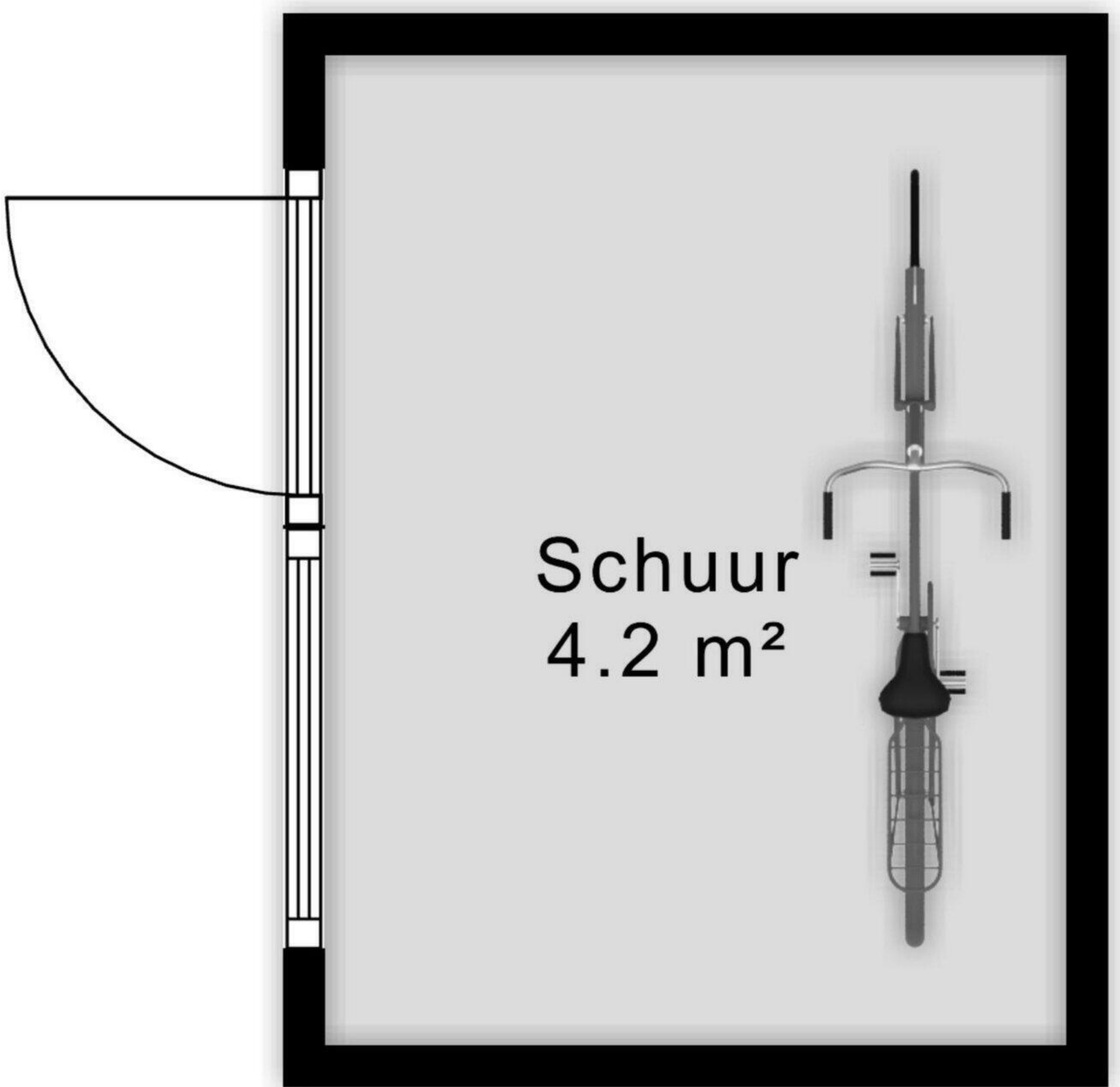
Begane Grond Tuin







← 1.77 m →



↑ 2.36 m ↓

Schuur



